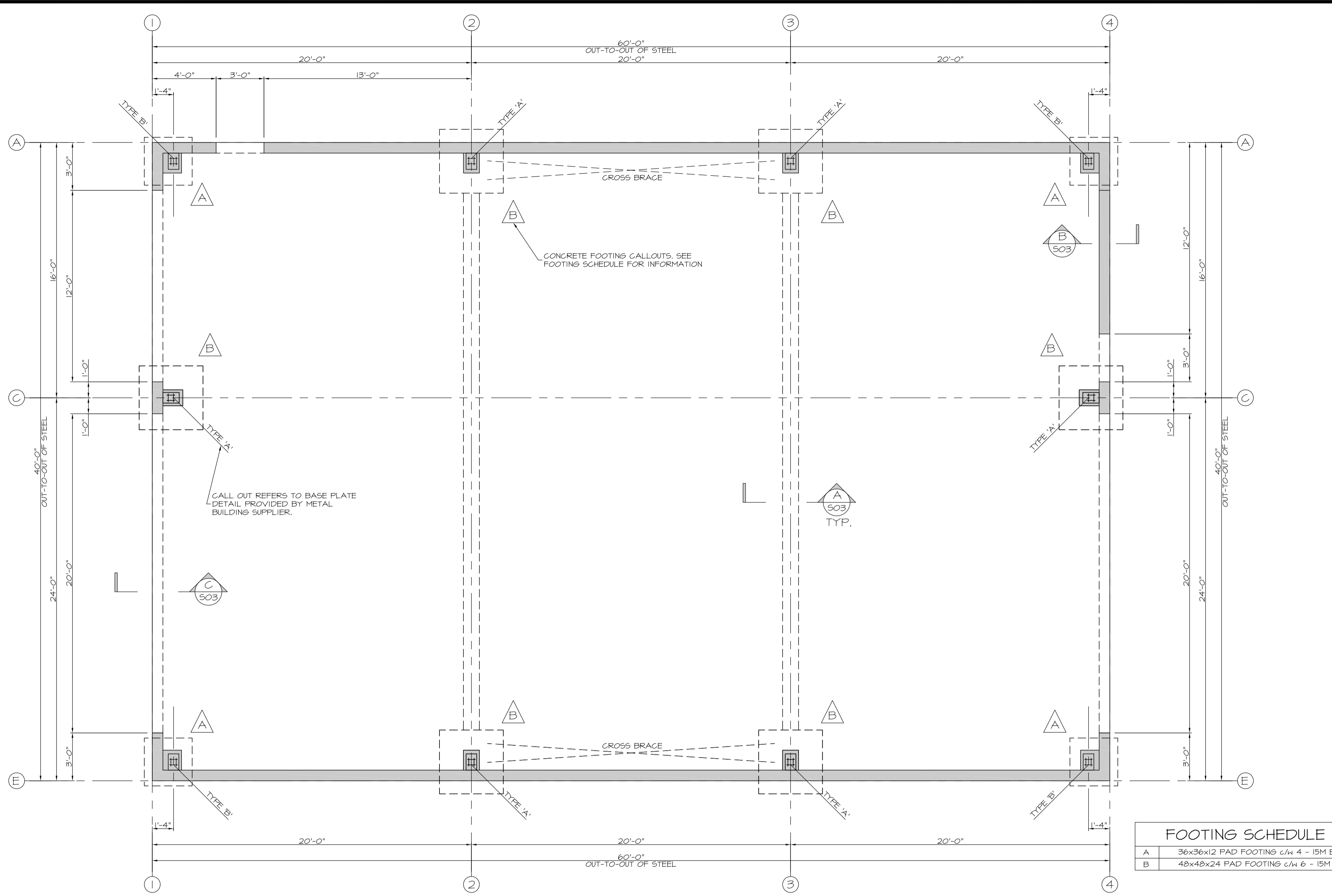


S:\4301 - AVRA Maintenance Bid\DWGS\S4301.DWG 21 September 2022 4:16 PM

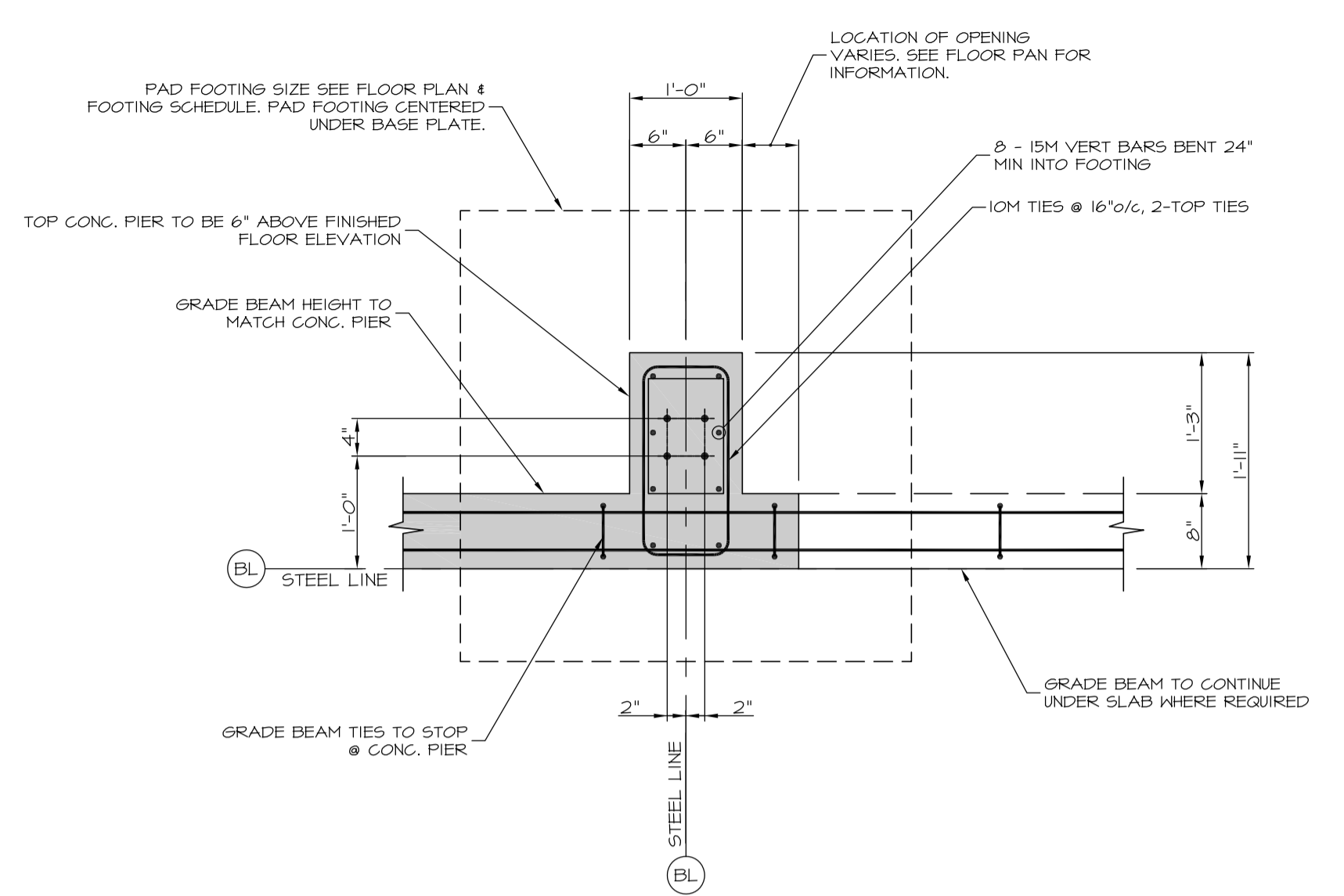


CALL OUT REFERS TO BASE PLATE DETAIL PROVIDED BY METAL BUILDING SUPPLIER.

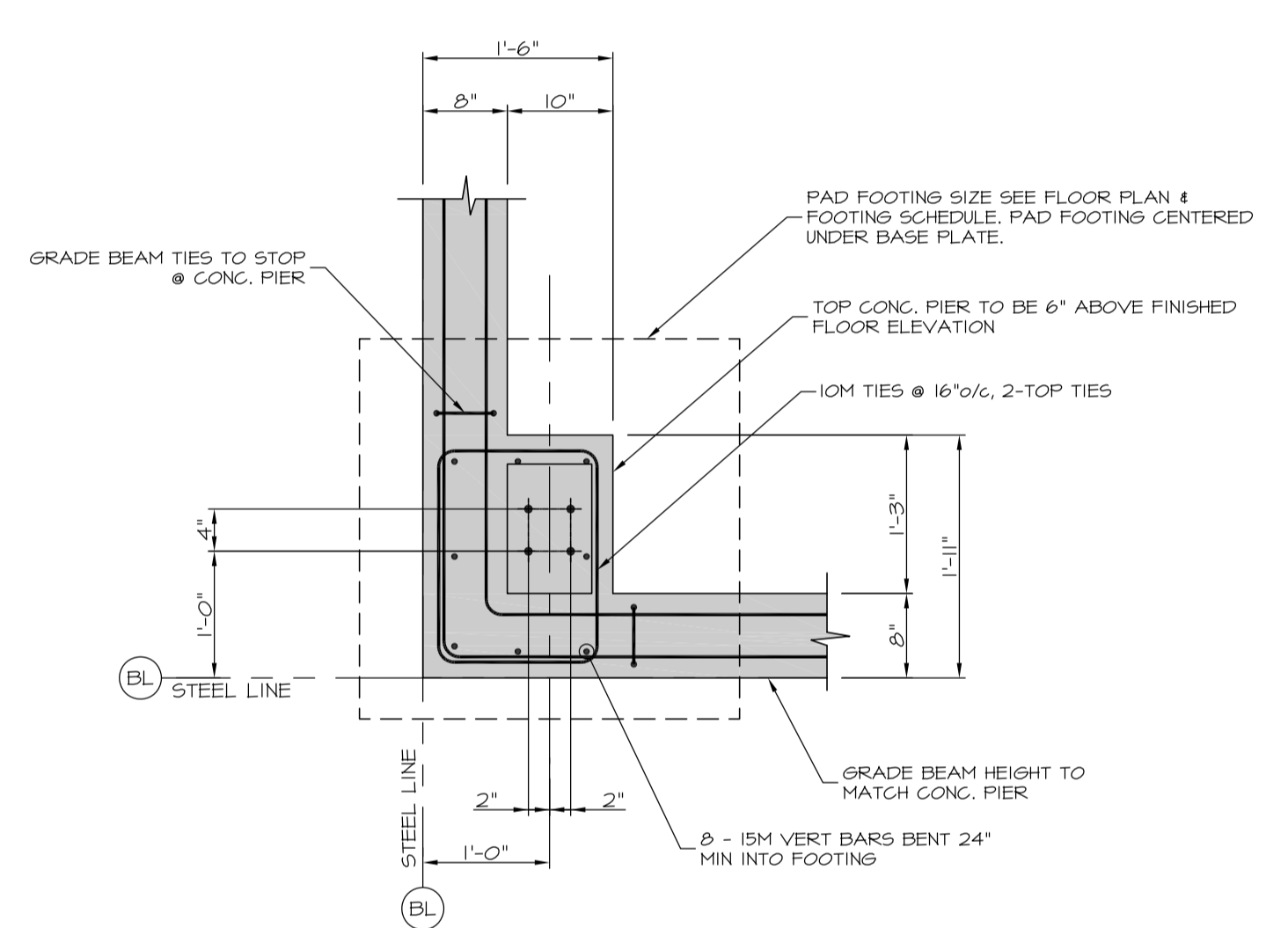
CONCRETE FOOTING CALLOUTS. SEE FOOTING SCHEDULE FOR INFORMATION

FOOTING SCHEDULE

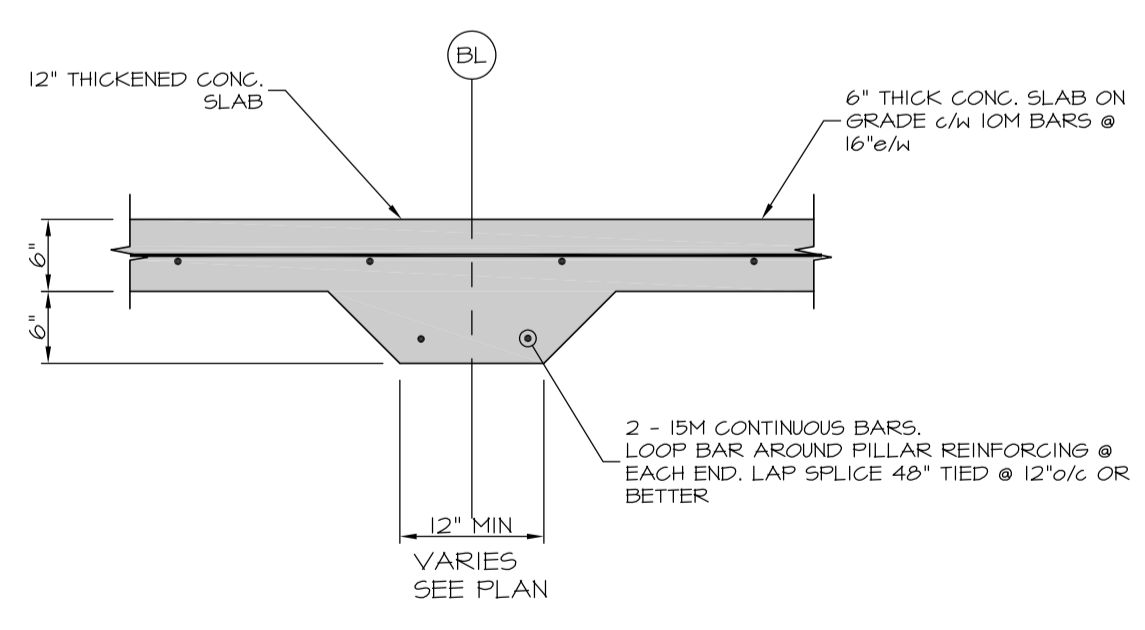
| | |
|---|---|
| A | 36x36x12 PAD FOOTING c/w 4 - 15M BARS e/w, BOT. |
| B | 48x48x24 PAD FOOTING c/w 6 - 15M BARS e/w, T4B |



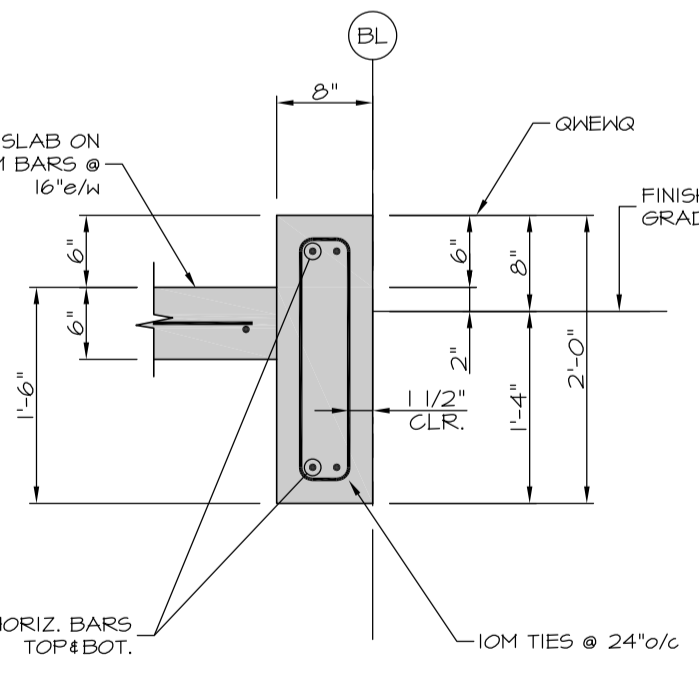
BASE PLATE DETAIL TYPE 'A'
SCALE: 3/4" = 1'-0"



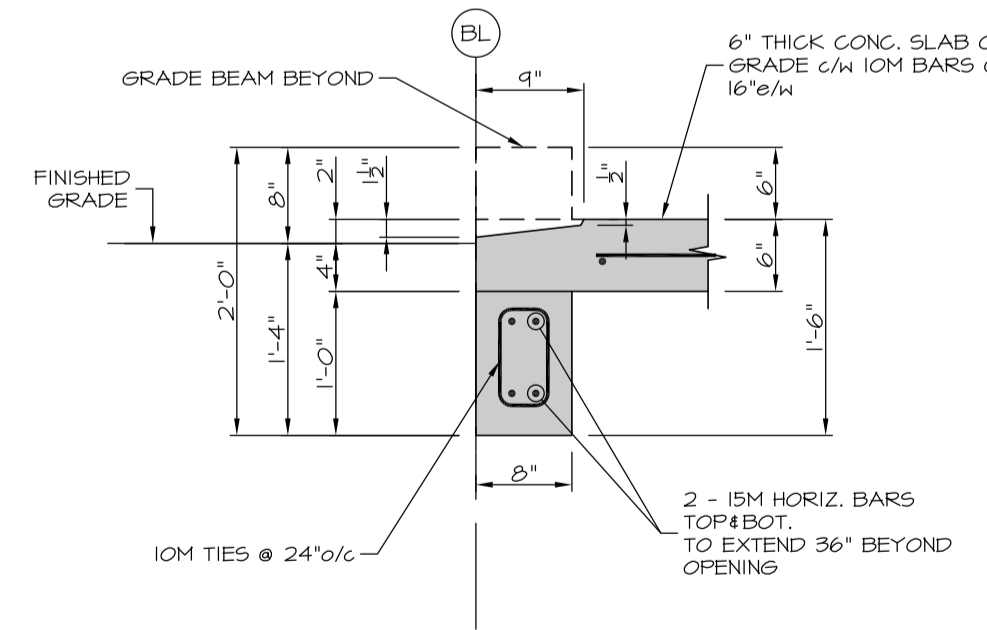
BASE PLATE DETAIL TYPE 'B'
SCALE: 3/4" = 1'-0"



SECTION A
SCALE: 3/4" = 1'-0"



SECTION B
SCALE: 3/4" = 1'-0"

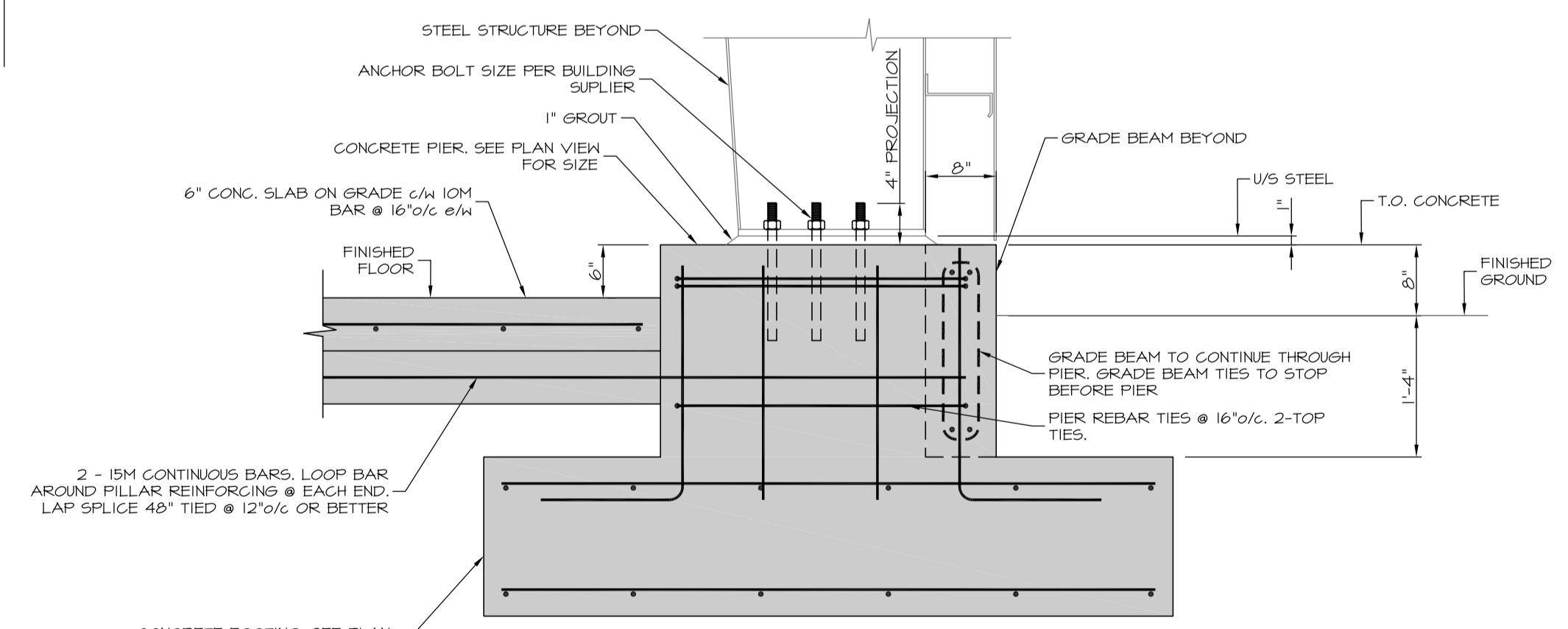


SECTION C
SCALE: 3/4" = 1'-0"

ANCHOR BOLT SCHEDULE

| SIZE | MIN EMBED | PROJECTION | GRADE |
|--------|-----------|------------|---|
| 1/2" | 8" | 4" | AS PER STEEL SUPPLIER |
| 3/4" | 16" | 4" | ASTM F1554 Grade 55 AS PER STEEL SUPPLIER |
| 1" | 24" | 4" | ASTM F1554 Grade 55 AS PER STEEL SUPPLIER |
| 1 1/4" | 28" | 4" | AS PER STEEL SUPPLIER |

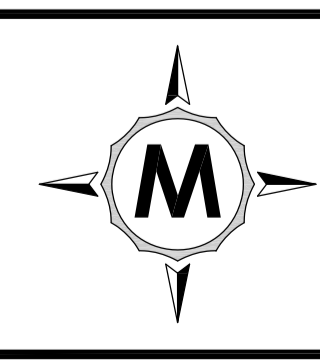
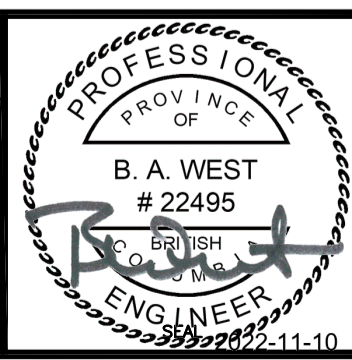
NOTE: ANCHOR BOLT DETAIL NTS



TYPICAL PIER SECTION
SCALE: 3/4" = 1'-0"

THIS PLAN AND DESIGN ARE, AND AT ALL TIMES REMAIN THE EXCLUSIVE PROPERTY OF MCGILL & ASSOCIATES ENGINEERING LTD. AND CANNOT BE USED OR REPRODUCED WITHOUT WRITTEN CONSENT. THIS PLAN IS PREPARED FOR THE SOLE USE OF OUR CLIENT AND NO REPRESENTATION OF ANY KIND IS MADE TO OTHER PARTIES WITH WHICH MCGILL & ASSOCIATES ENGINEERING LTD. HAS NOT ENTERED INTO A CONTRACT. WRITTEN DIMENSIONS SHALL HAVE PRECEDENCE OVER SCALED DIMENSIONS. CONTRACTORS SHALL VERIFY AND BE RESPONSIBLE FOR ALL DIMENSIONS AND CONDITIONS ON THE JOB AND THIS OFFICE SHALL BE INFORMED OF ANY VARIATIONS FROM THE DIMENSIONS AND CONDITIONS SHOWN ON THE DRAWINGS.

| | | | | | | |
|-----------|----------------------|------------|-----|-------|---------------|-----------|
| DESIGN: | BAW | | | | | |
| DRAWN: | CJM | | | | | |
| CHECKED: | BAW | | | | | |
| APPROVED: | | | | | | |
| DATE: | SEPT. 2022 | | | | | |
| SCALE: | AS NOTED | | | | | |
| A | ISSUED FOR TENDER | 2022/11/10 | CJM | BAW | | |
| No. | REVISION DESCRIPTION | DATE | BY | APP'D | DWG File Name | S4301.DWG |



McGILL & ASSOCIATES ENGINEERING LTD.
 PERMIT TO PRACTICE No. 1002564
 4610 ELIZABETH STREET
 PORT ALBERNI, B.C., V9Y 6L7
 telephone: (250) 724-3400 fax: (250) 724-4400
 email: office@mcgilleng.com

ALBERNI CLAYOQUOT REGIONAL DISTRICT
CBS8 - ALBERNI, MAINTENANCE BUILDING
FOUNDATION PLAN

| | |
|-------------|------------|
| SHEET No. | S02 |
| 2 OF 2 | REV. A |
| DRAWING No. | 4301 - S02 |

The electronic version is the digitally signed and sealed Original Document. This drawing is a paper copy of the Original Document.