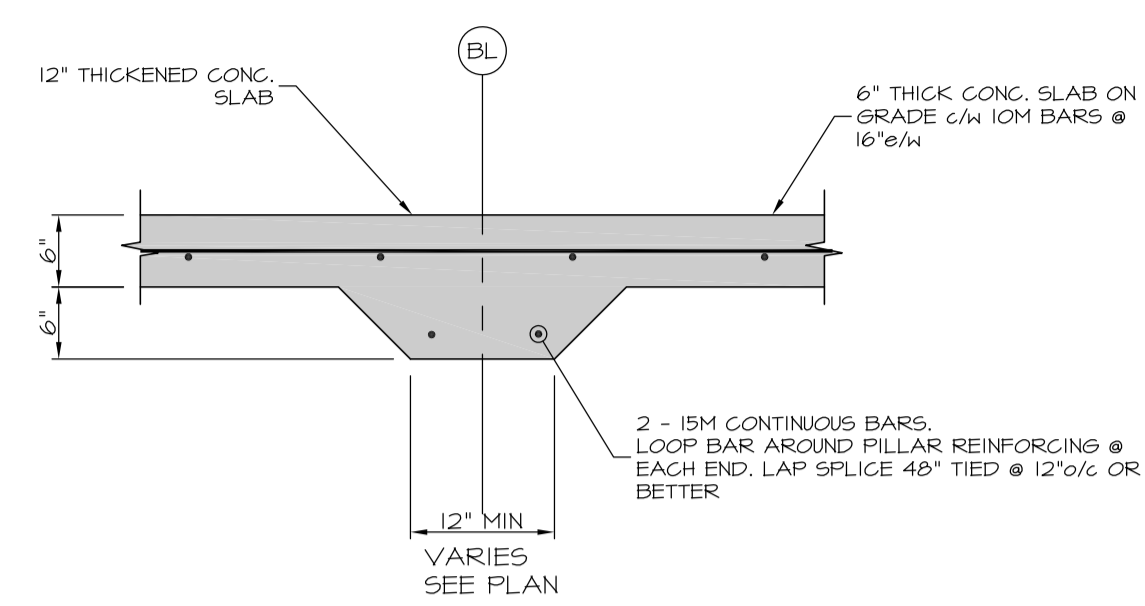
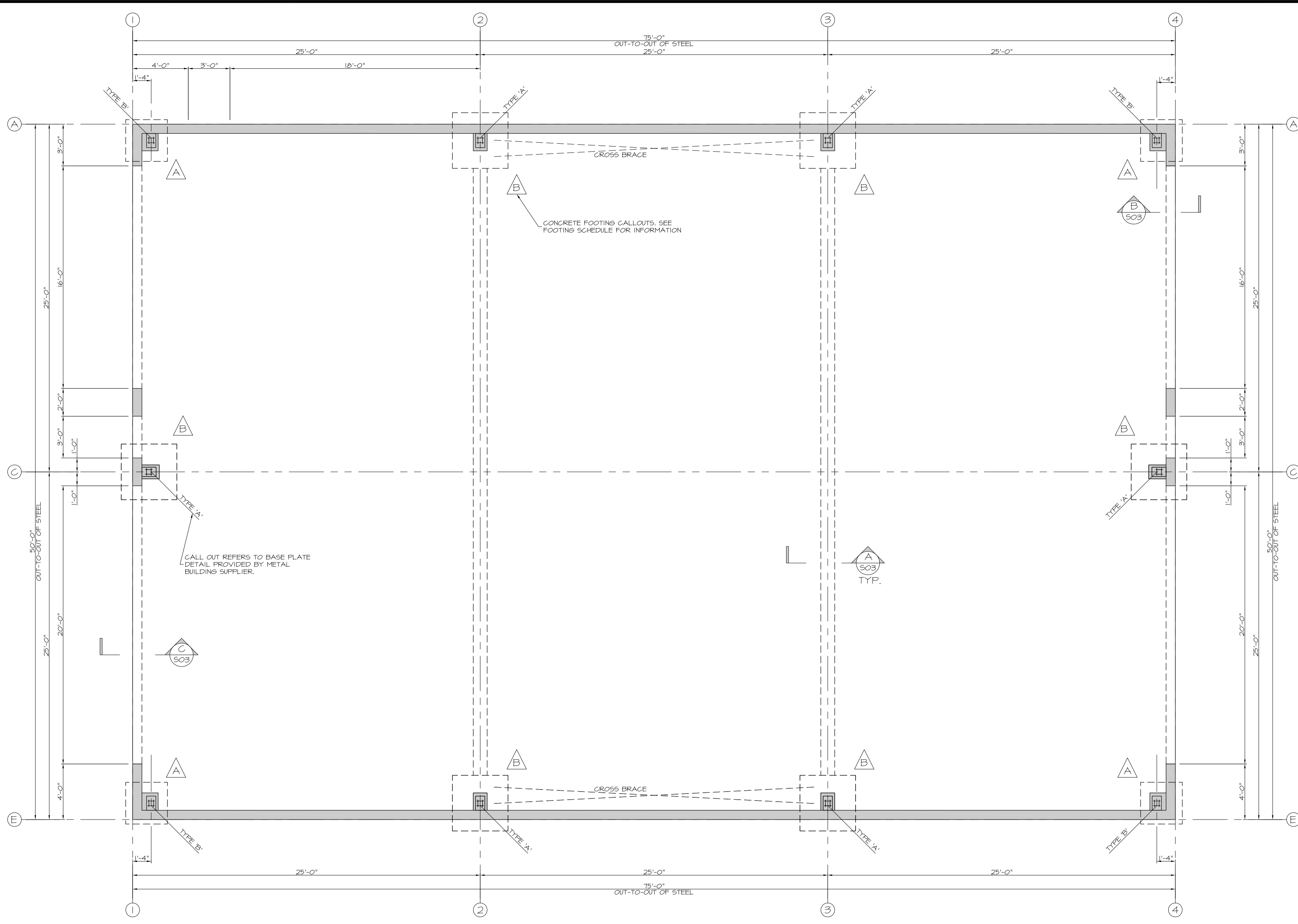
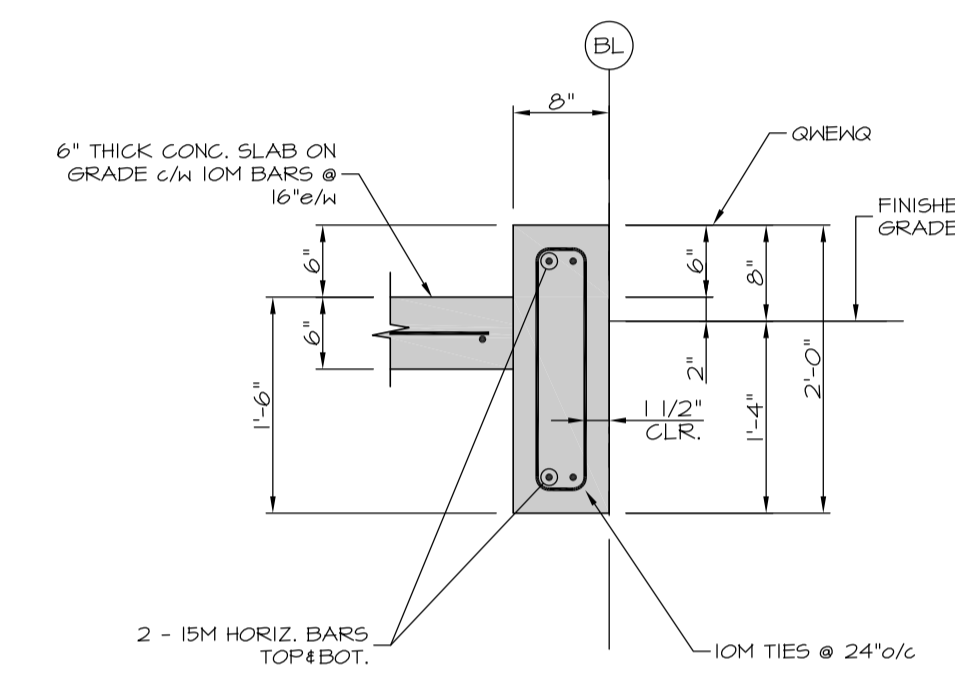


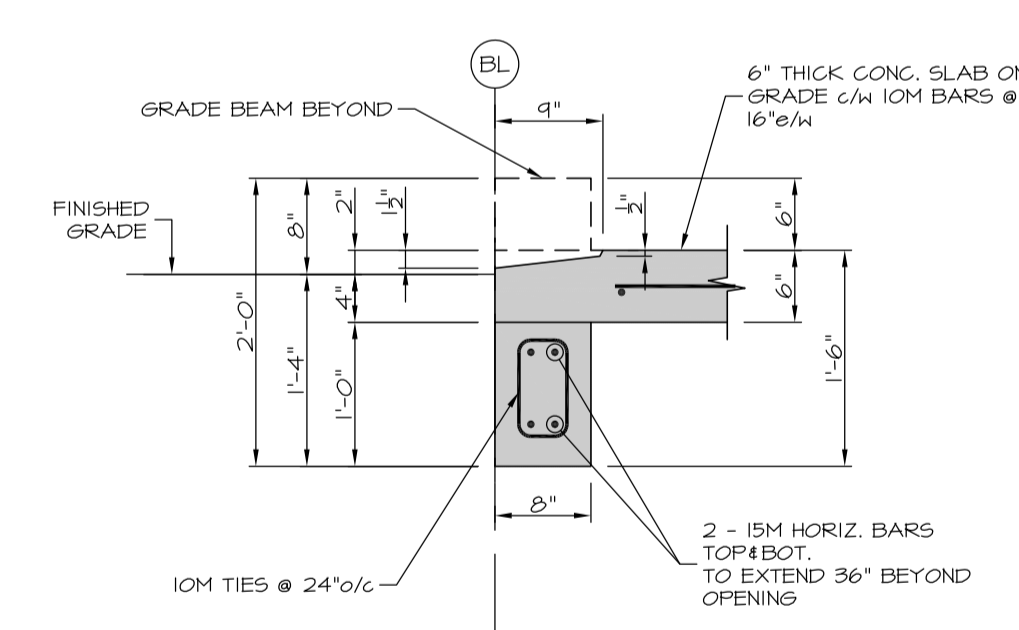
S:\2689 R3AC Long Beach Airport Maintenance Building\004 Building Expansion\Dwg\S2689-004.dwg 21 September 2022 4:16 PM



SECTION A-501
SCALE: 3/4" = 1'-0"



SECTION B-501
SCALE: 3/4" = 1'-0"



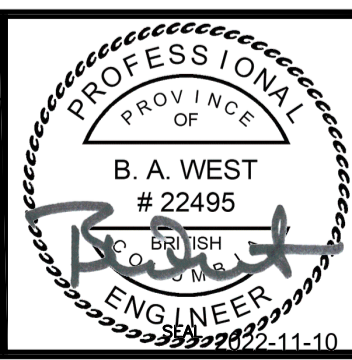
SECTION C-501
SCALE: 3/4" = 1'-0"

FOOTING SCHEDULE

#	Description
A	36x36x12 PAD FOOTING c/w 4 - 15M BARS e/w, BOT.
B	48x48x24 PAD FOOTING c/w 6 - 15M BARS e/w, T&B

THIS PLAN AND DESIGN ARE, AND AT ALL TIMES REMAIN THE EXCLUSIVE PROPERTY OF MCGILL & ASSOCIATES ENGINEERING LTD. AND CANNOT BE USED OR REPRODUCED WITHOUT WRITTEN CONSENT. THIS PLAN IS PREPARED FOR THE SOLE USE OF OUR CLIENT AND NO REPRESENTATION OF ANY KIND IS MADE TO OTHER PARTIES WITH WHICH MCGILL & ASSOCIATES ENGINEERING LTD. HAS NOT ENTERED INTO A CONTRACT. WRITTEN DIMENSIONS SHALL HAVE PRECEDENCE OVER SCALED DIMENSIONS. CONTRACTORS SHALL VERIFY AND BE RESPONSIBLE FOR ALL DIMENSIONS AND CONDITIONS ON THE JOB AND THIS OFFICE SHALL BE INFORMED OF ANY VARIATIONS FROM THE DIMENSIONS AND CONDITIONS SHOWN ON THE DRAWINGS.

No.	REVISION DESCRIPTION	DATE	BY	APP'D	DWG File Name	S4301.DWG
A	ISSUED FOR TENDER	2022/11/10	CJM	BAW	FIELD BOOK No.	



McGILL & ASSOCIATES ENGINEERING LTD.

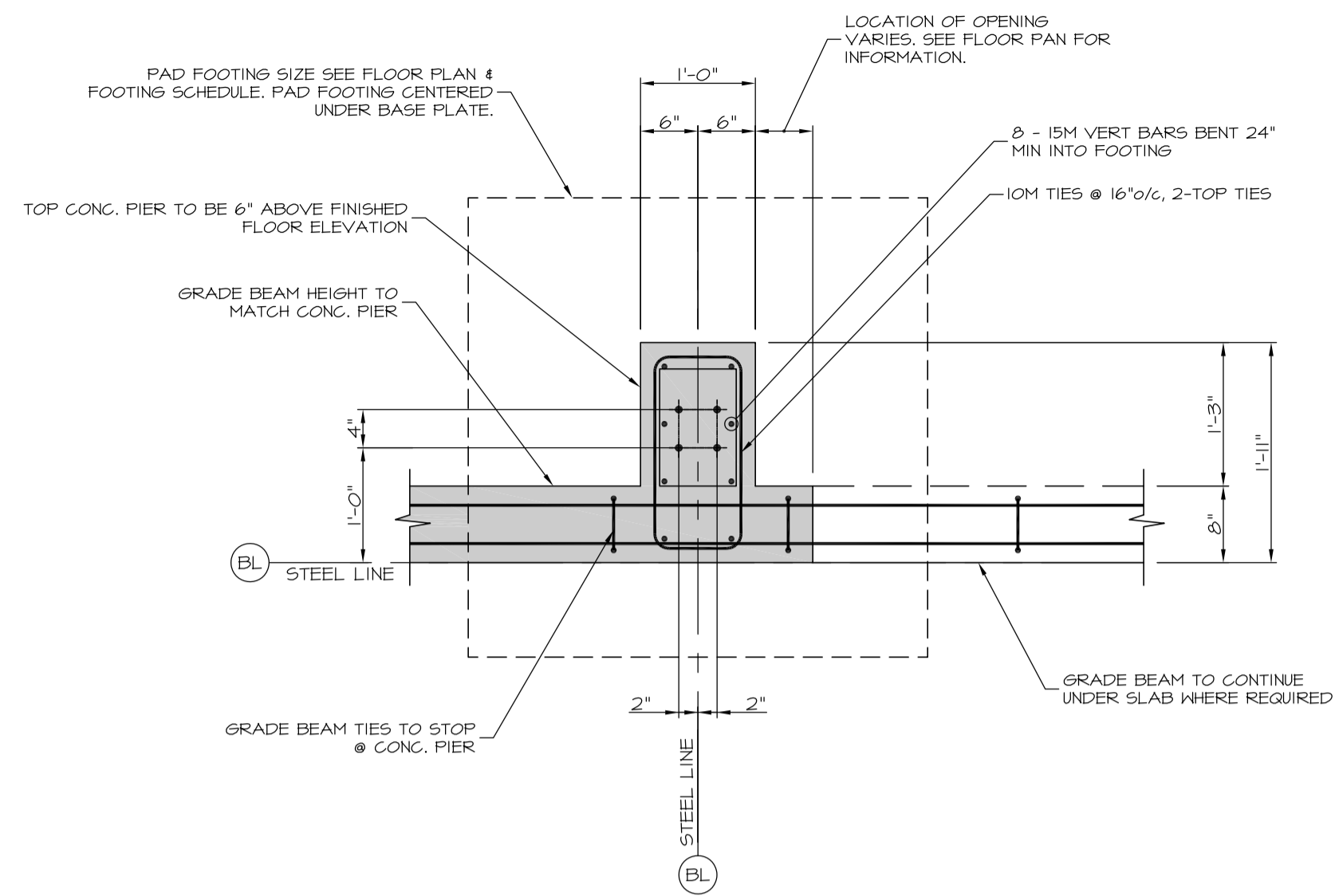
PERMIT TO PRACTICE No. 1002564
4610 ELIZABETH STREET
PORT ALBERNI, B.C., V9Y 6L7
telephone: (250) 724-3400 fax: (250) 724-4400
email: office@mcgilleng.com

ALBERNI CLAYOQUOT REGIONAL DISTRICT
YAZ-TOFINO, MAINTENANCE BUILDING
FOUNDATION PLAN

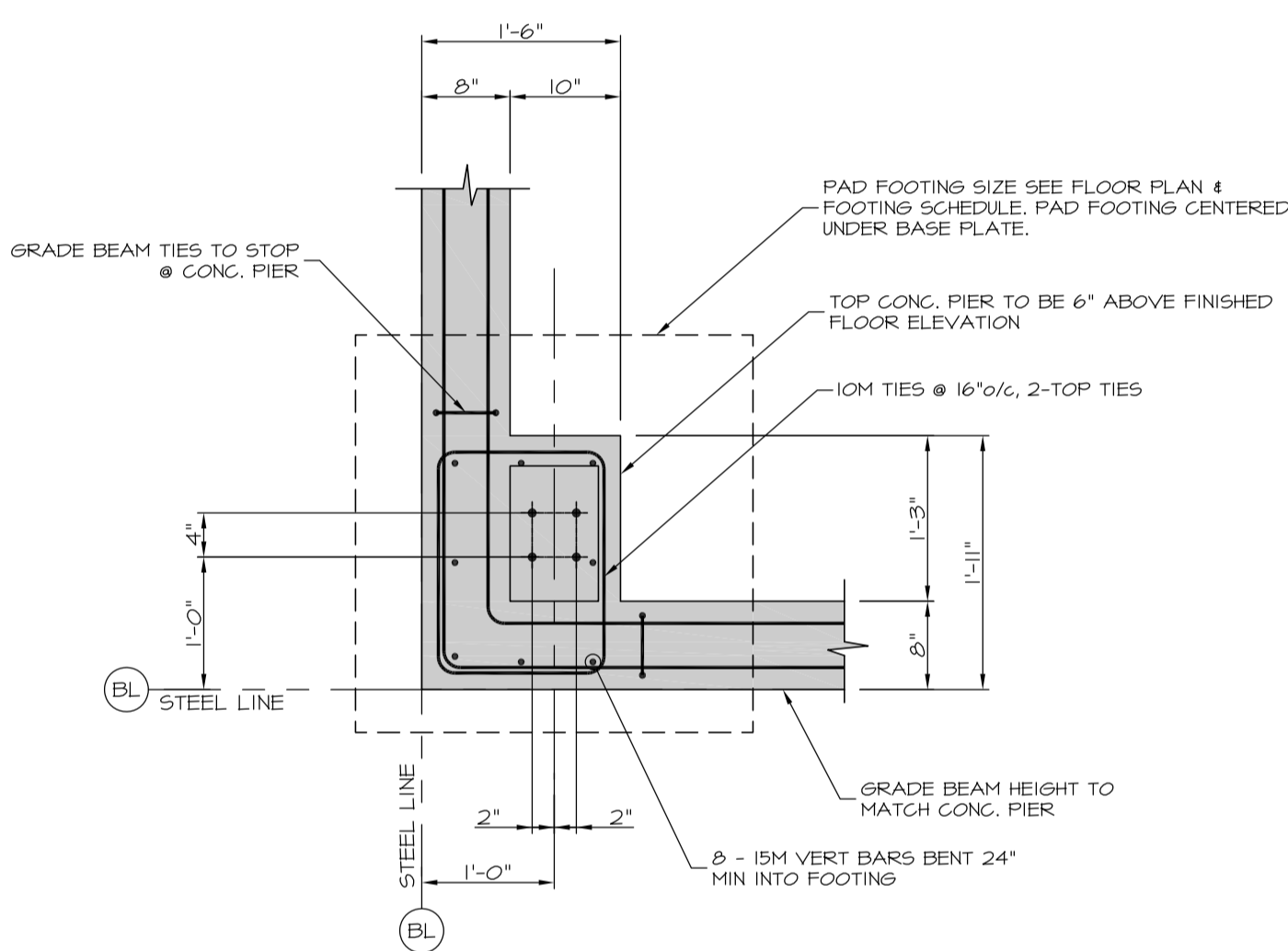
SHEET No.	S02
2 OF 3	REV. A
DRAWING No.	2689-004-S02

The electronic version is the digitally signed and sealed Original Document. This drawing is a paper copy of the Original Document.

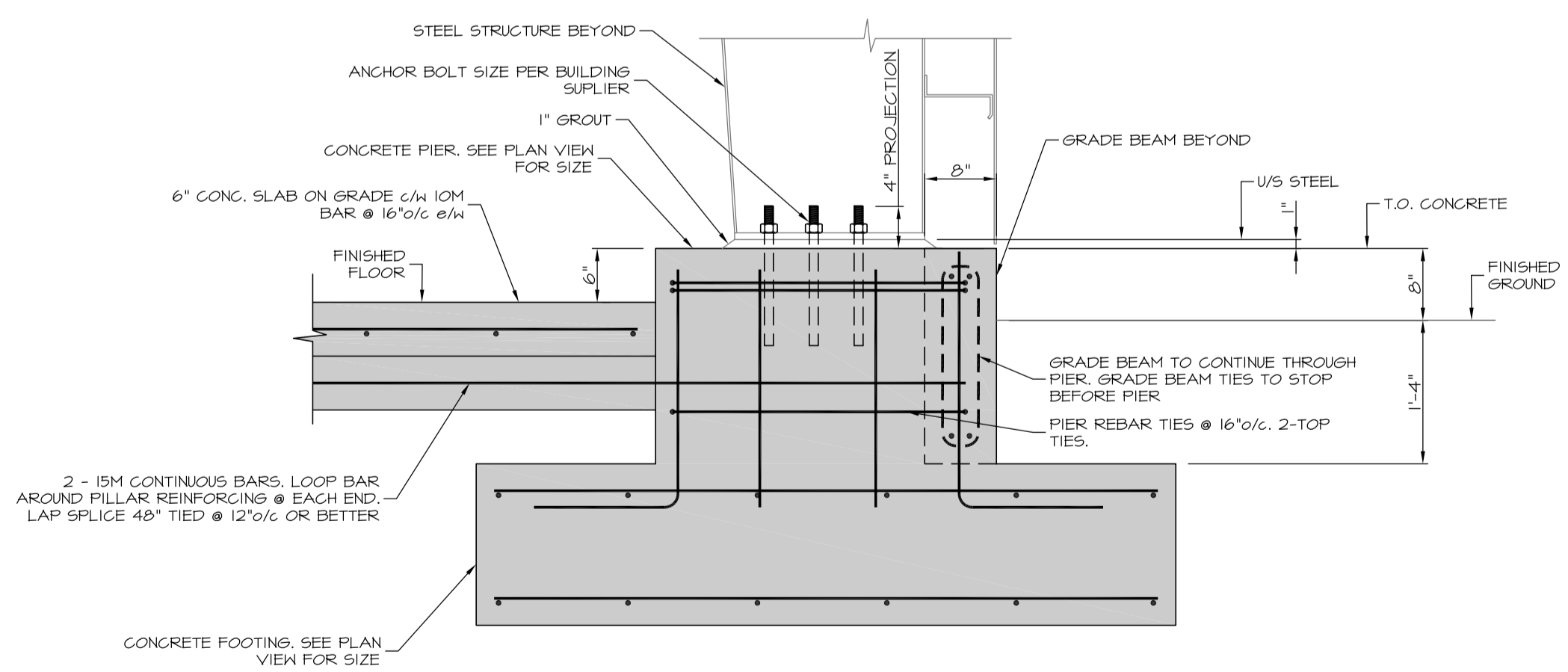
S:\2689 R3AC Long Beach Airport Maintenance Building\004 Building Expansion\004.dwg 21 September 2022 4:16 PM



BASE PLATE DETAIL TYPE 'A'
SCALE: 3/4" = 1'-0"



BASE PLATE DETAIL TYPE 'B'
SCALE: 3/4" = 1'-0"



TYPICAL PIER SECTION
SCALE: 3/4" = 1'-0"

ANCHOR BOLT SCHEDULE			
SIZE	MIN EMBED	PROJECTION	GRADE
1/2"φ	8"	4"	AS PER STEEL SUPPLIER
3/4"φ	16"	4"	ASTM F1554 Grade 55 AS PER STEEL SUPPLIER
1"φ	24"	4"	ASTM F1554 Grade 55 AS PER STEEL SUPPLIER
1 1/4"φ	28"	4"	AS PER STEEL SUPPLIER

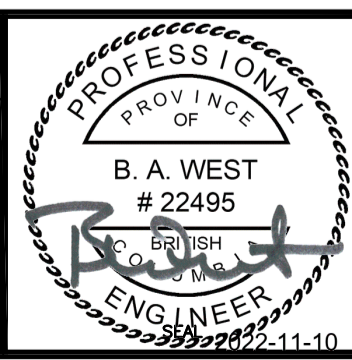
NOTE:

ANCHOR BOLT DETAIL
NTS

THIS PLAN AND DESIGN ARE, AND AT ALL TIMES REMAIN THE EXCLUSIVE PROPERTY OF MCGILL & ASSOCIATES ENGINEERING LTD. AND CANNOT BE USED OR REPRODUCED WITHOUT WRITTEN CONSENT. THIS PLAN IS PREPARED FOR THE SOLE USE OF OUR CLIENT AND NO REPRESENTATION OF ANY KIND IS MADE TO OTHER PARTIES WITH WHICH MCGILL & ASSOCIATES ENGINEERING LTD. HAS NOT ENTERED INTO A CONTRACT. WRITTEN DIMENSIONS SHALL HAVE PRECEDENCE OVER SCALED DIMENSIONS. CONTRACTORS SHALL VERIFY AND BE RESPONSIBLE FOR ALL DIMENSIONS AND CONDITIONS ON THE JOB AND THIS OFFICE SHALL BE INFORMED OF ANY VARIATIONS FROM THE DIMENSIONS AND CONDITIONS SHOWN ON THE DRAWINGS.

DESIGN:	BAW
DRAWN:	CJM
CHECKED:	BAW
APPROVED:	
DATE:	SEPT. 2022
SCALE:	AS NOTED
FIELD BOOK No.	
DWG File Name	S4301.DWG

A	ISSUED FOR TENDER	2022/11/10	CJM	BAW
No.	REVISION DESCRIPTION	DATE	BY	APP'D



McGILL & ASSOCIATES ENGINEERING LTD.

PERMIT TO PRACTICE No. 1002564
4610 ELIZABETH STREET
PORT ALBERNI, B.C., V9Y 6L7
telephone: (250) 724-3400 fax: (250) 724-4400
email: office@mcgilleng.com

ALBERNI CLAYOQUOT REGIONAL DISTRICT
YAZ-TOFINO, MAINTENANCE BUILDING
FOOTING DETAILS

SHEET No.	S03
3 OF 3	REV. A
DRAWING No.	2689-004-S03

The electronic version is the digitally signed and sealed Original Document. This drawing is a paper copy of the Original Document.