



British Columbia Conservation Foundation

Bear Hazard Assessment for Bamfield and Anacla

Presented by: Mandy Ross, Bamfield Coordinator



Bear Smart Community

🐾 Criteria

- 🐾 Continuing Education program
- 🐾 **Bear Hazard Assessment** ✓ ✓
- 🐾 Human-Bear Hazard Management Plan
- 🐾 Bear-resistant solid waste management system
- 🐾 Revise decision making documents
- 🐾 Bear Smart bylaw







Bear Hazard Assessment (BHA)

What is a Bear Hazard Assessment?

-  A report which identify the key issues that influence existing or potential human-bear conflicts.

Sources of the data for the BHA

-  Conservation Officer Services/ RAPP line and WARP (Wildlife Alert Reporting Program)
-  Local Interviews
-  Community Bear Interaction Survey
-  WildSafeBC Coordinator's 9 years of personal experience of the working with wildlife conflict reduction in Bamfield.

Bear Hazard Assessment

- 🐾 Five main components of the BHA
 - 🐾 Community Bear interaction Survey
 - 🐾 Mapping of bear travel corridors and high quality bear habitat.
 - 🐾 Mapping of permanent or semi-permanent non-natural attractants
 - 🐾 Identification of Risk areas based on above info and historical conflict
 - 🐾 Outlining Next Steps



Photo taken by Nancy Hendry

Community Survey

Community Bear Interaction Survey

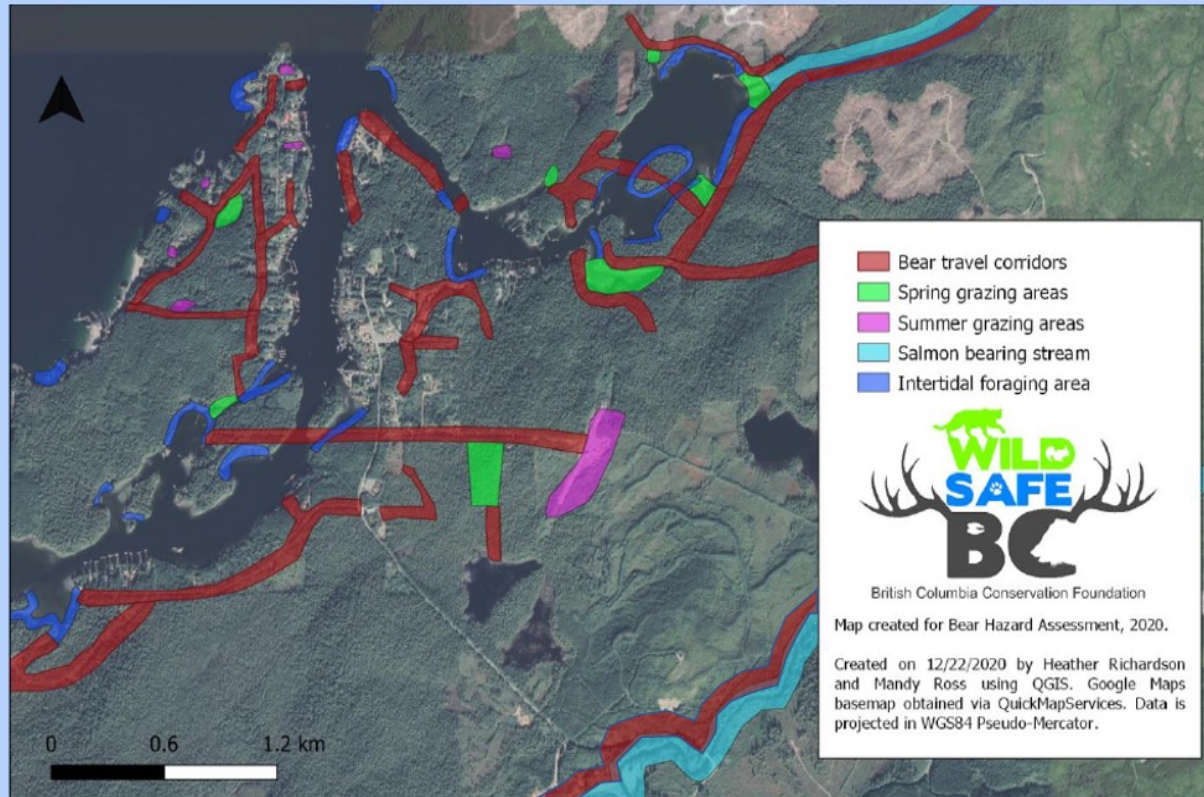
- Idea of people's perception of bears
- People's understanding of attractant management
- Idea of areas where human-bear conflict is

Example:

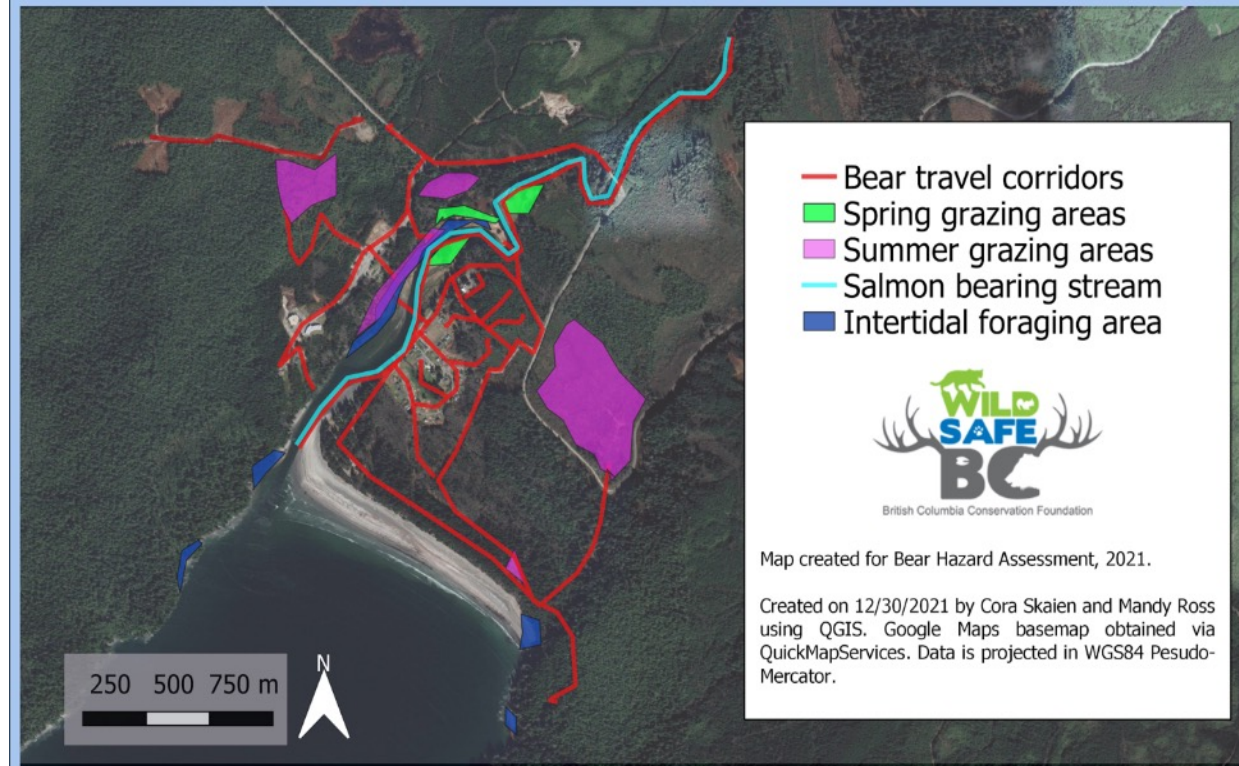
- Many people say they don't call the COS because they were afraid that bears would get destroyed
 - Help's the WildSafeBC Coordinator identify where to focus educational efforts

Bear Travel Corridor & Seasonal Feeding Areas

Bear Travel Corridors and Natural Foods, Bamfield

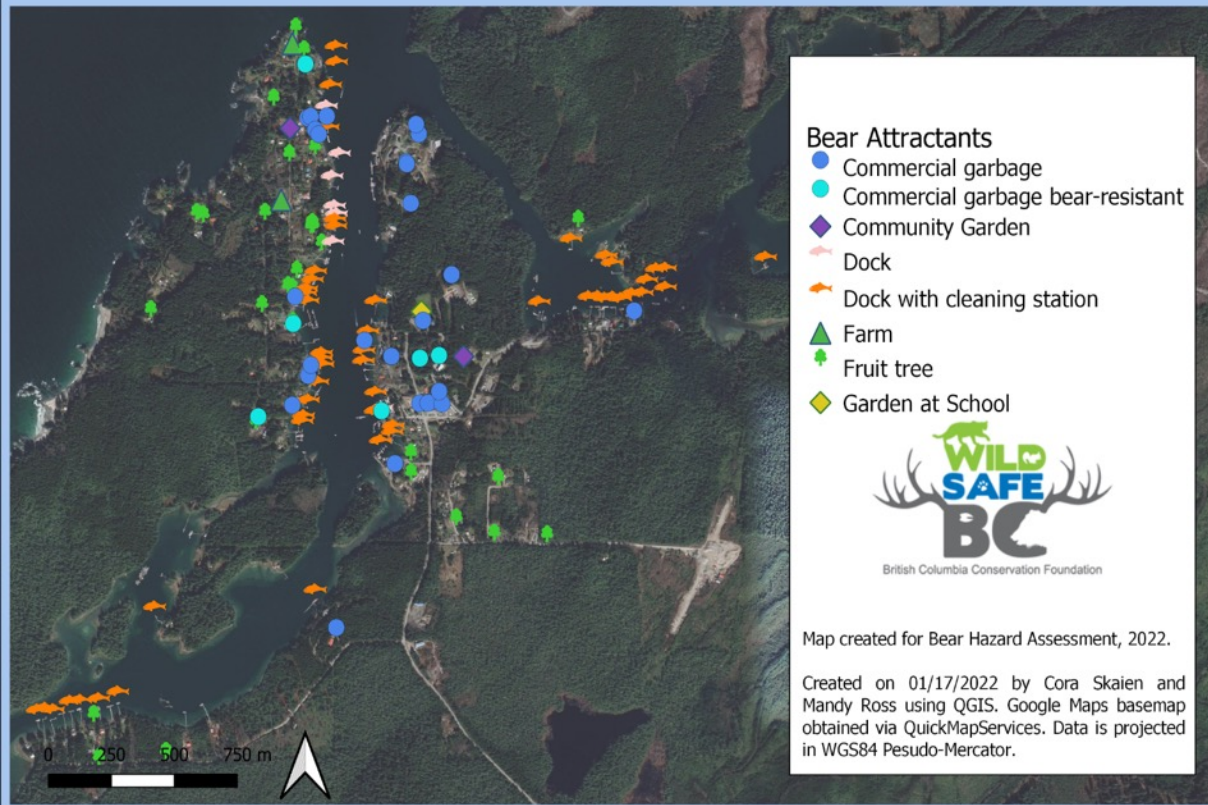


Bear Travel Corridors and Natural Foods, Anacla



Non-Natural Bear Attractants

Bear Attractants in Bamfield



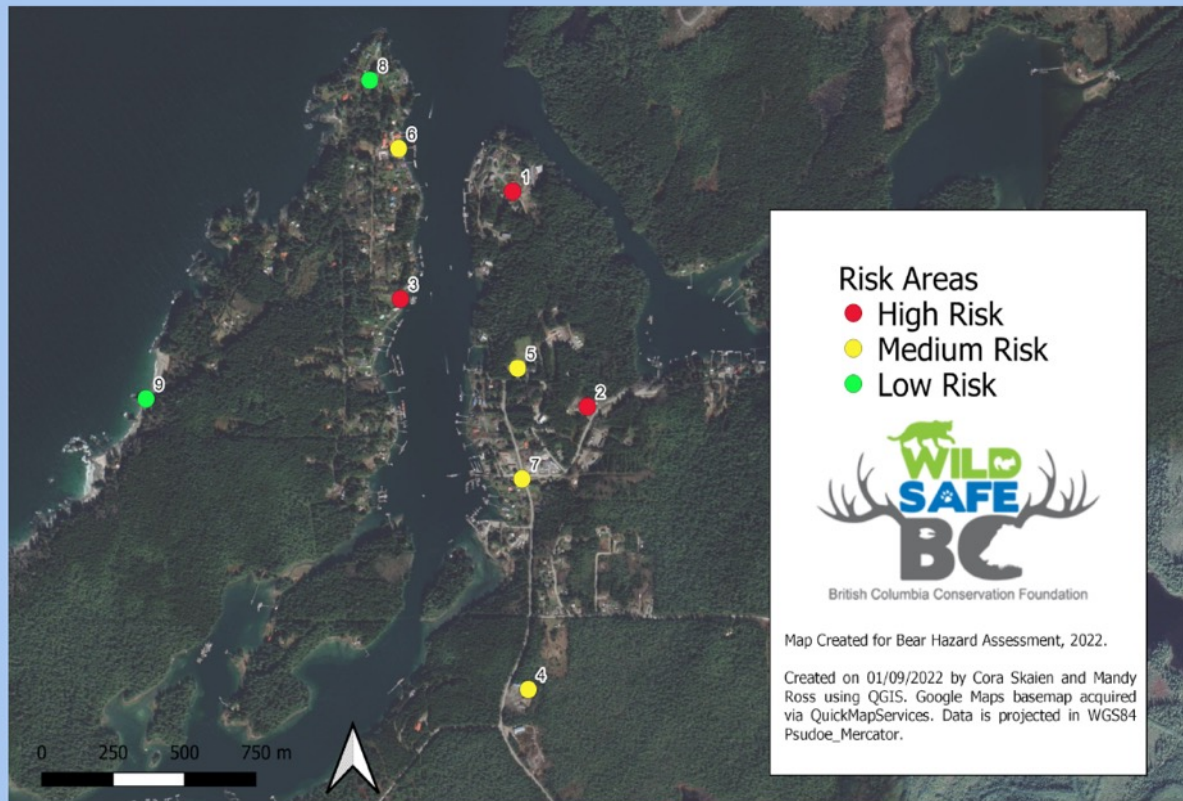
Bear Attractants in Anacla



Note: Backyard chickens, composters and outdoor freezers were not included in the mapping for privacy reasons

Risk Areas

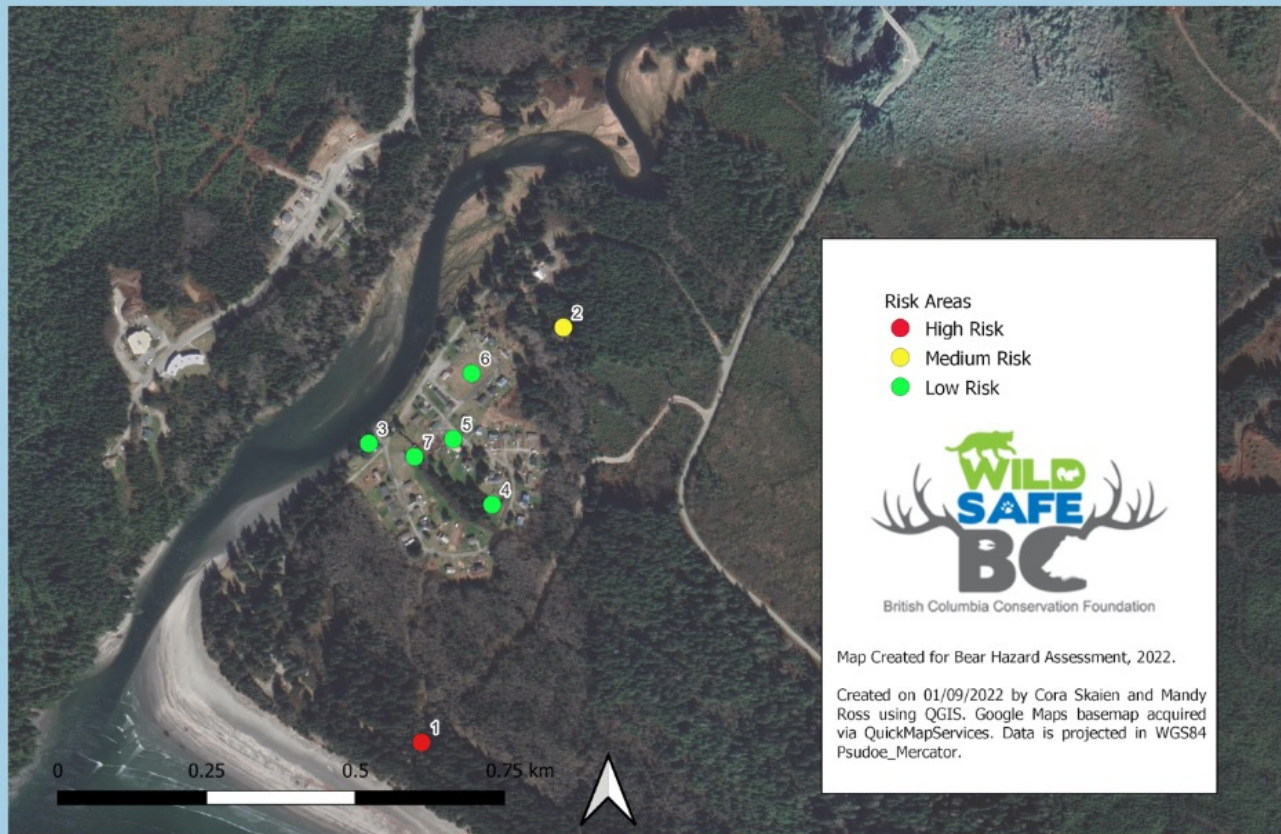
Risk Areas, Bamfield



Location of hazard	Risk Level
BMSC	High
Campground	High
Boardwalk	High
Transfer Station	Medium
Elementary School	Medium
Westside Commercial Center	Medium
Eastside Commercial center	Medium
Mills Peninsula	Low
Brady's Beach	Low

Risk Areas

Risk Areas, Anacla



Location of hazard	Risk Level
Pachena Campground	High
Paawats	Medium
Boat Ramp	Low
Field with stream	Low
Community Garden	Low
Playing field	Low
Playground	Low

Next Steps

🐾 Attractant management

- 🐾 Back Yard Chickens /Compost/ Outdoor Freezers/ Fish refuse/ Fruit trees
- 🐾 Education/ By-laws

🐾 Solid Waste Management

- 🐾 Non-bear-resistant commercial and public dumpsters.
- 🐾 User Compliance
 - 🐾 Decals needed for bin
- 🐾 Overflowing bins
 - 🐾 Frequency of removal and diversion from waste stream.
- 🐾 Commercial/vacation rental and residential garbage improperly stored.
- 🐾 Permanent electric fencing at Transfer Station.



Next Steps

🐾 Continue Promoting Cost-share Program

🐾 3 electric fences and one bear-resistant composter were subsidized in 2021



🐾 Educational Signs

🐾 Continue promoting Bare Campsite program for Campgrounds

🐾 Develop new bear smart by-laws

Next Steps

Bear Smart Community Criteria

🐾 Criteria

- 🐾 Continuing Education program ✓
- 🐾 Bear Hazard Assessment ✓
- 🐾 **Human-Bear Hazard Management Plan**
- 🐾 Bear-resistant solid waste management system
- 🐾 Revise decision making documents
- 🐾 Bear Smart bylaw



Thank you



BRITISH COLUMBIA
CONSERVATION
FOUNDATION



Alberni-Clayoquot
Regional District