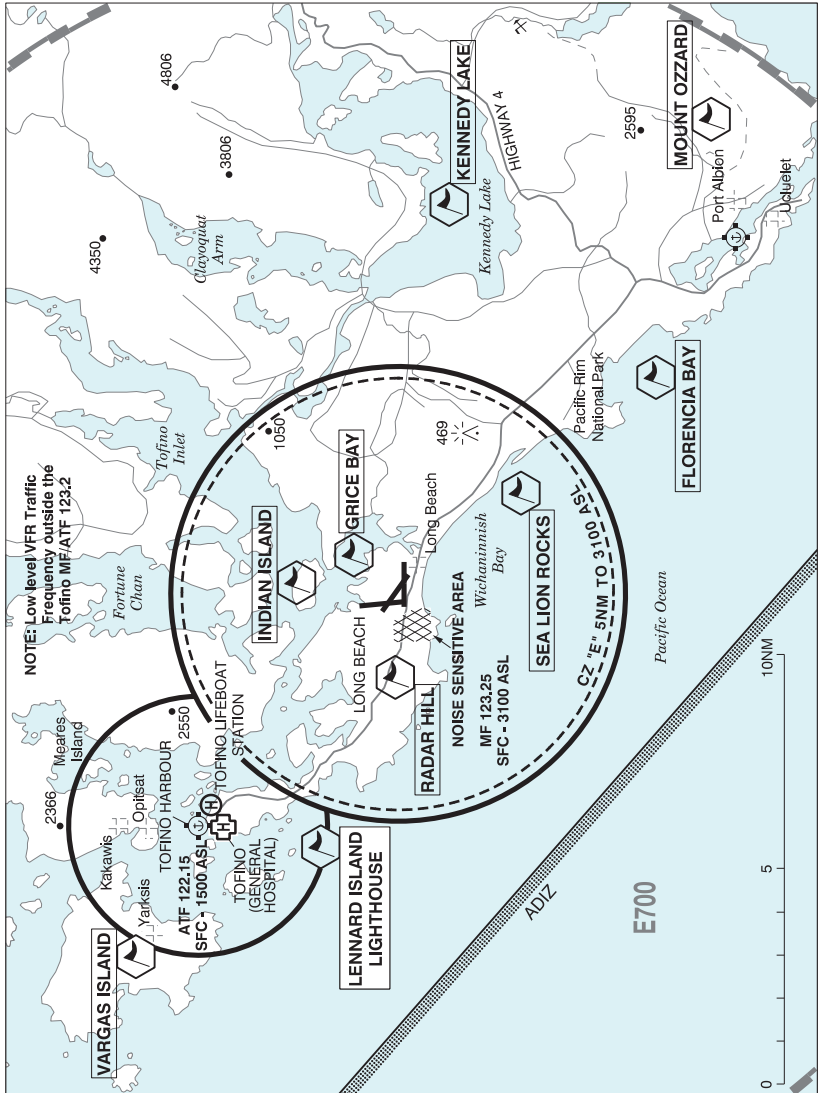


TOFINO / LONG BEACH VFR TERMINAL PROCEDURES CHART



BRITISH COLUMBIA

AERODROME / FACILITY DIRECTORY

TOFINO / LONG BEACH VFR TERMINAL PROCEDURES CHART (Cont'd)

NAME	IDENT	LAT/LONG
FLORENCIA BAY	VCFLO	N48° 59' 00" W125° 38' 35"
GRICE BAY	VCGRB	N49° 05' 55" W125° 44' 50"
INDIAN ISLAND	VCIIIS	N49° 07' 05" W125° 45' 50"
KENNEDY LAKE	VCKLK	N49° 03' 55" W125° 32' 30"
LENNARD ISLAND LIGHTHOUSE	VCLIL	N49° 06' 38" W125° 55' 20"
MOUNT OZZARD	VCOZZ	N48° 57' 50" W125° 29' 30"
RADAR HILL	VCRDR	N49° 05' 00" W125° 49' 20"
SEA LION ROCKS	VCSEA	N49° 02' 00" W125° 42' 40"
VARGAS ISLAND	VCVRG	N49° 11' 45" W125° 59' 10"

BRITISH COLUMBIA

AERODROME / FACILITY DIRECTORY

TOFINO / LONG BEACH BC

CYAZ

REF	N49 04 55 W125 46 21 6SE 17°E (2015) UTC-8(7) Elev 80' A5004 LO2 HI3 CAP	
OPR	Alberni-Clayoquot Regional District Airport 250-720-2700, 250-725-3751 1600-0030Z‡ Mon-Fri exc hol Cert Ldg fees	
PF	B-1,6 D-2,3,4,5	
FLT PLN	<p>FIC Kamloops 866-WXBRIEF (Toll free within Canada) or 866-541-4101 (Toll free within Canada & USA)</p> <p>WX METAR 15-01Z (DT 13-01Z) O/T LWIS TAF 17-01Z (DT 15-01Z), issue times: 17, 19Z (DT 15, 19Z).</p>	
SERVICES		
FUEL	100LL, JA-1 Cardlock 24 hr emerg phone 250-266-1449	
RWY DATA	Rwy 16(158°)/34(338°) 5000x100 CONC Thld 16 displ 208'. Thld 34 displ 887'. Rwy 11(109°)/29(289°) 5000x100 ASPH Thld 11 displ 500'. Rwy 07(073°)/25(253°) 5000x150 CONC Thld 07 displ 735'. Thld 25 displ 358'.	
RWY CERT	Rwy 16/34 AGN IIIB Rwy 11/29 AGN IIIB Rwy 07/25 AGN IIIB	
APRON	Apron III: NW end of Apron for fixed wing and helicopter refuelling.	
RCR	Aprt ops 250-725-3751 Ltd win maint. PCN	
LIGHTING	11-AS(TE ME) P1, 29-AS(TE ME) P1 ARCAL-123.25 type K	
COMM	For IFR clnc ctc Hardy rdo 1330-0530Z‡ O/T Pacific rdo	
RCO	Hardy rdo 123.25 PTC avbl (RAAS) 1330-0530Z‡ Pacific rdo 125.85 (FISE) 126.7 (bcst)	
MF	Hardy rdo 123.25 1330-0530Z‡ O/T tfc 5NM 3100 ASL (CAR 602.98)	
PAL	Vancouver Ctr 132.9 134.925 254.9	
PRO	PVT Water landing strip PPR Avoid overflight of noise sensitive area at less than 1000 AGL, see A/D sketch & VTPC	