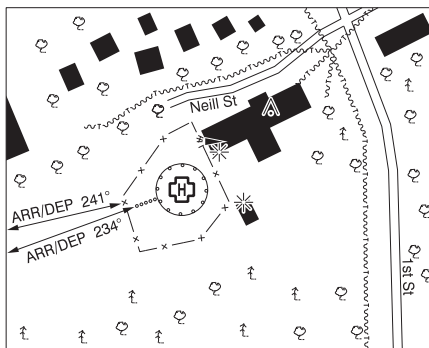
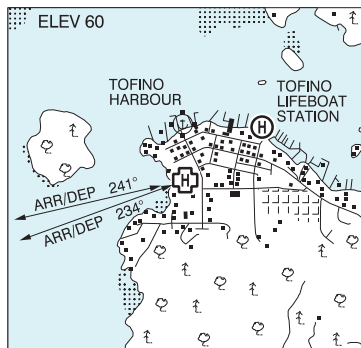


**BRITISH COLUMBIA**

**AERODROME / FACILITY DIRECTORY**

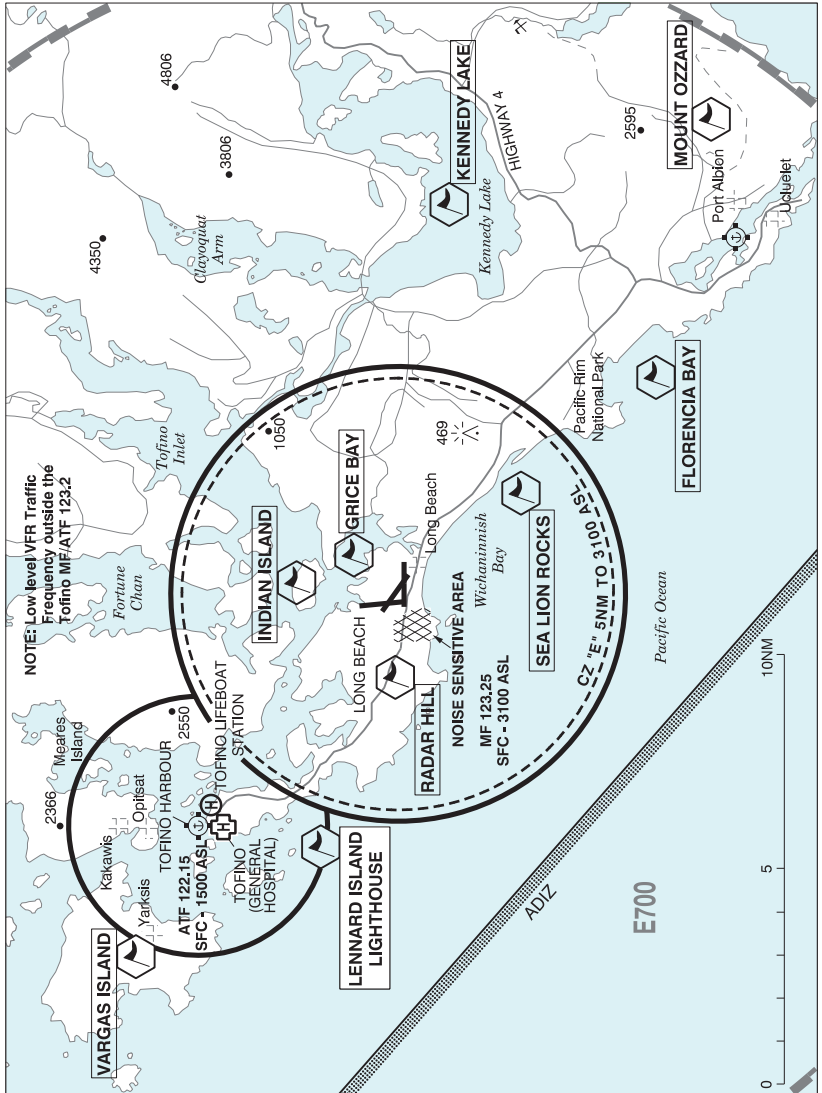
**TOFINO (GENERAL HOSPITAL) BC (Heli)**

**CBC8**



<b>REF</b>	N49 09 04 W125 54 33 Adj 16°E (2019) UTC-8(7) Elev 60' A5004
<b>OPR</b>	Island Health 250-370-8575 Cert NVIS OPS AUTH PPR
<b>PF</b>	B-1,4 C-2,3,5
<b>FLT PLN</b>	
<b>FIC</b>	Kamloops 866-WXBRIEF (Toll free within Canada) or 866-541-4101 (Toll free within Canada & USA)
<b>HELI DATA</b>	FATO/TLOF 86' dia CONC H2 OPS: Safety Area 115' dia H3 OPS: Safety Area 85' dia H2 Max heli overall length 57.4' (CAR 602.96) H3 Max heli overall length 42.4' (CAR 602.96)
<b>RCR</b>	Opr
<b>LIGHTING</b>	DR(234°) LED RW (ME) green LED ARCAL-122.8 type K
<b>COMM</b>	
<b>ATF</b>	Tofino Harbour tfc 122.15 3NM centred on Tofino Harbour water A/D 0.2NM NNW 1500 ASL exc area within Tofino CZ as depicted on Tofino VTPC
<b>A/G</b>	Hosp Security 158.76 FM 3 min PN
<b>PRO</b>	Arr/dep 241° fr heli, slope 8% (H3) (CAR 602.96). Day only (CAR 602.96). Arr/dep 234° fr heli, slope 16% (H2) (CAR 602.96). NVIS rqrd for night use (CAR 602.96).
<b>CAUTION</b>	Trees to 100 AAE adj N & S. Trees to 130 AAE 350' E. Unlgtd p-lines to 30 AAE adj N & to 57 AAE 300' E. Lgtd twr 426 ASL (160 AGL) 0.4NM ESE. Only pilots familiar with lcl terrain should use this heli during hrs of darkness.

**TOFINO / LONG BEACH VFR TERMINAL PROCEDURES CHART**



## BRITISH COLUMBIA

AERODROME / FACILITY DIRECTORY

## TOFINO / LONG BEACH VFR TERMINAL PROCEDURES CHART (Cont'd)

NAME	IDENT	LAT/LONG
FLORENCIA BAY	VCFLO	N48° 59' 00" W125° 38' 35"
GRICE BAY	VCGRB	N49° 05' 55" W125° 44' 50"
INDIAN ISLAND	VCIIIS	N49° 07' 05" W125° 45' 50"
KENNEDY LAKE	VCKLK	N49° 03' 55" W125° 32' 30"
LENNARD ISLAND LIGHTHOUSE	VCLIL	N49° 06' 38" W125° 55' 20"
MOUNT OZZARD	VCOZZ	N48° 57' 50" W125° 29' 30"
RADAR HILL	VCRDR	N49° 05' 00" W125° 49' 20"
SEA LION ROCKS	VCSEA	N49° 02' 00" W125° 42' 40"
VARGAS ISLAND	VCVRG	N49° 11' 45" W125° 59' 10"