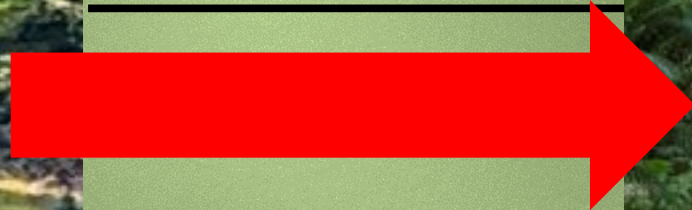


FINDING
THE BEST
PATH
FORWARD



E&N "RAILS AND/OR TRAILS"

Who Are FORT-VI?



Friends Of Rails to Trails – Vancouver Island

- BC Not-for-Profit Society incorporated Sept 2018 in order to investigate and **encourage the re-purposing of unused Vancouver Island rail lines as multi-use trails**

Our Vision

- Encourage the preservation and protection of the E&N Railway corridors in perpetuity as a multi-use Active Transportation network connecting communities on Vancouver Island.

Overview of Segments



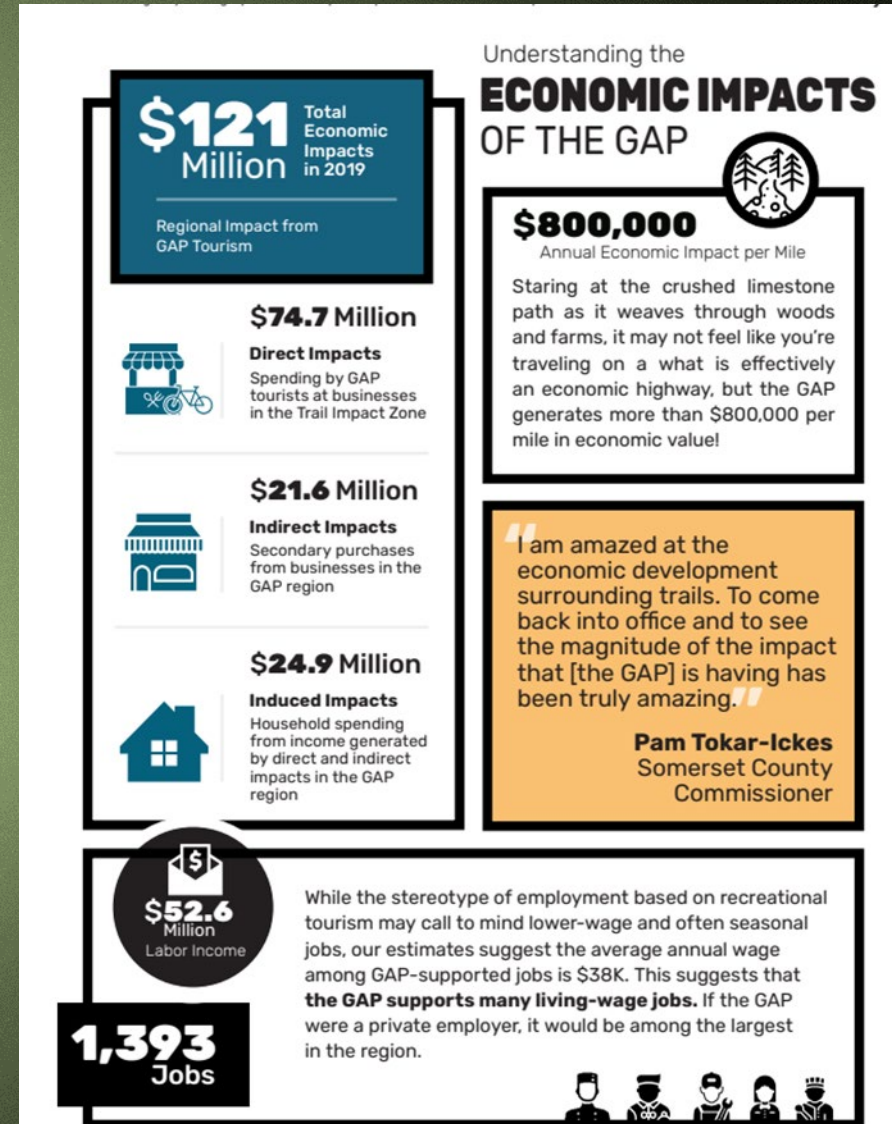
- 224 km Rail Corridor from **Victoria to Courtenay**
- 236 Level Crossings (112 controlled)
- 64 km spur Parksville to **Port Alberni**
- 5 Regional Districts & 14 First Nations
- 67 Bridges and Trestles
- Minimal rail usage since 2011

Pennsylvania GAP – “Great Allegheny Passage”

Tourism and Economic Benefits Comparison



- **Similar in length and settlement pattern** to the E&N (241 km, 37 settlements, population 640,000)
- The trail is estimated to draw **1 Million visitors a year**





Thursday, April 14, 2022

John Douglas
Friends of Rails to Trails Vancouver Island (FORT-VI)

Via email: jmdouglas56@shaw.ca

Dear John:

Following up with you on your recent request for a letter of support regarding your application for Federal Active Transportation Funding.

The Alberni Valley Chamber of Commerce (AVCOC) recognizes the financial challenges of rail recovery along the east coast of Vancouver Island and to date we have not seen a business case that supports such an investment. On the flip side AVCOC has always promoted fitness and health as witnessed by many of our events over the years (No. 7 Challenge – a 10k footrace, Tri-Conic Challenge – a three-day triathlon concept, the Paper Chase – a 15k run as part of the Island Series). Accordingly, we support initiatives that bring people outside in healthy settings.

We are pleased to lend our support to FORT-VI for the Victoria-Courtenay corridor and the link from Port Alberni to the Oceanside area.

Our Chamber will continue to advocate for a return of the Alberni Pacific Railway linking Port Alberni to the McLean Mill National Historic Site (often referred to as the six-mile track). That route continues to carry significant tourism value to our community.

We look forward to learning of success with your application and perhaps we can join you in the inaugural bike ride!

Yours truly,
ALBERNI VALLEY CHAMBER OF COMMERCE

A handwritten signature in black ink, appearing to read "Bill Collette", is written over the typed name.

Bill Collette
CEO

President

Terry Deakin

Vice President

Suzanne Dube

**2nd Vice
President**

Daniel Savard

Secretary

Krista McKittrick

Treasurer

Michael Moore

Directors

Murray Lawlor
Mary Clare Massicotte
Teresa Bird
Peter Wienold
Dave Heinrichs
Crystal Knudsen
Lori Kerr
Carol-Anne Phillips

Past President

Sarah Jones

CEO

Bill Collette

Our Ask



- That the ACRD direct their Island Corridor Foundation (ICF) Representative to propose a motion that the ICF amend their mandate to promote active transportation alternatives on the Island Corridor, in particular on the spur from Coombs to the MacLean Mill site, in the Alberni Valley.
-
- **THANK YOU. JOHN DOUGLAS Port Alberni. Friends of Rails to Trails Vancouver Island**
- jmdouglas56@shaw.ca 250-735-7177

\$121
Million

Total
Economic
Impacts
in 2019

Regional Impact from
GAP Tourism



\$74.7 Million

Direct Impacts

Spending by GAP
tourists at businesses
in the Trail Impact Zone



\$21.6 Million

Indirect Impacts

Secondary purchases
from businesses in the
GAP region



\$24.9 Million

Induced Impacts

Household spending
from income generated
by direct and indirect
impacts in the GAP
region

\$52.6
Million
Labor Income

1,393
Jobs

While the stereotype of employment based on recreational tourism may call to mind lower-wage and often seasonal jobs, our estimates suggest the average annual wage among GAP-supported jobs is \$38K. This suggests that **the GAP supports many living-wage jobs.** If the GAP were a private employer, it would be among the largest in the region.

Understanding the **ECONOMIC IMPACTS** OF THE GAP



\$800,000

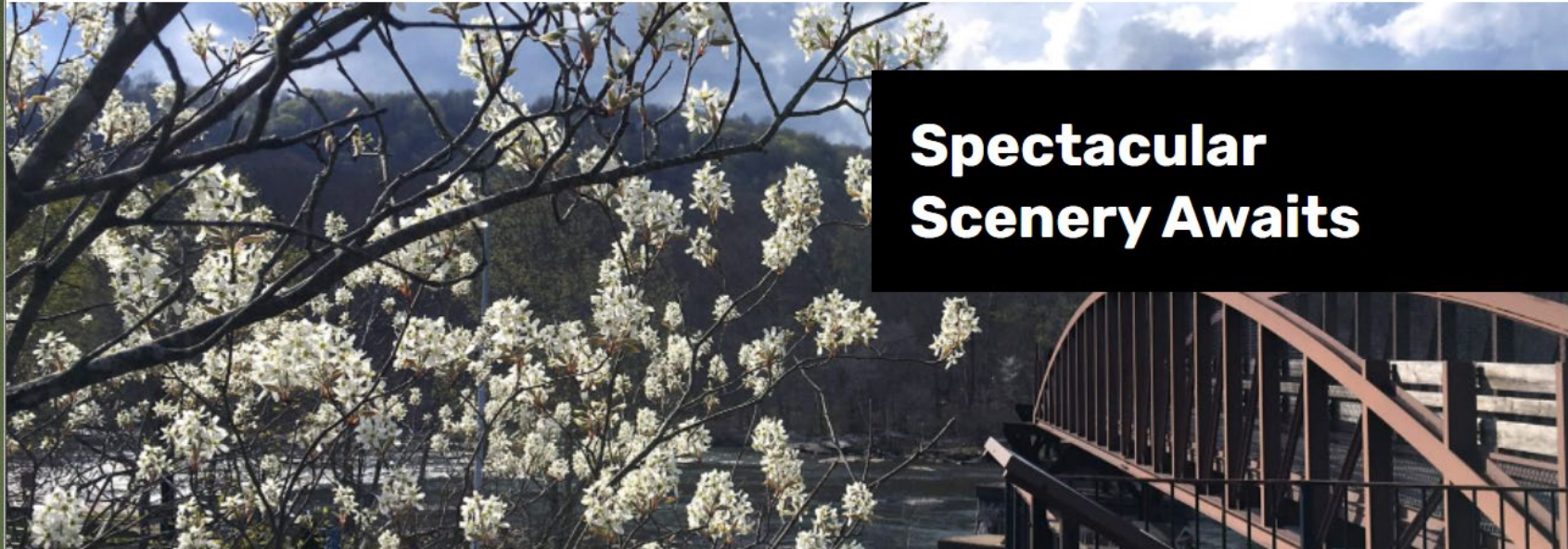
Annual Economic Impact per Mile

Staring at the crushed limestone path as it weaves through woods and farms, it may not feel like you're traveling on a what is effectively an economic highway, but the GAP generates more than \$800,000 per mile in economic value!

"I am amazed at the economic development surrounding trails. To come back into office and to see the magnitude of the impact that [the GAP] is having has been truly amazing."

Pam Tokar-Ickes
Somerset County
Commissioner





Spectacular Scenery Awaits

Plan Your Trip



Take a ride on a section of the GAP starting in [\[choose a town\]](#)



Spend a few days on the GAP while [\[choose an activity\]](#) along the way.



Follow a recommended trip. [\[choose a trip type\]](#)

Explore the Great Allegheny Passage



CULTURE
Allegheny Museum



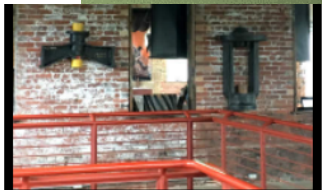
LANDMARK
Borden Tunnel



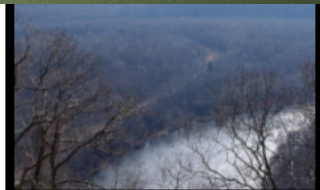
VISTA
Bollman Bridge



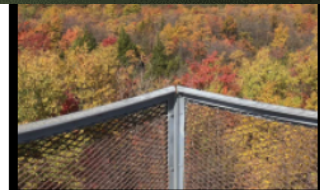
GETTING HERE
Amtrak's Capitol Limited



HISTORY
Pump House



RECREATION
Laurel Highlands Hiking Trail



RECREATION
Mount Davis

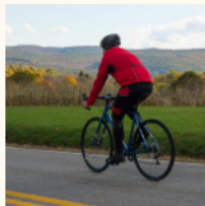
[View More](#)



GOLDEN TRIANGLE BIKE

Arrange the perfect trip on the GAP or C&O Canal Towpath with expert logistics, bike rentals, shuttles, and more.

[Learn More](#)



AERO TECH DESIGNS

Outfit your group for a GAP trip with a full range of comfortable bicycling apparel. Custom designs are available!

[Learn More](#)

