

Rent Bank

What We Do

Who We Help

Cost of Program

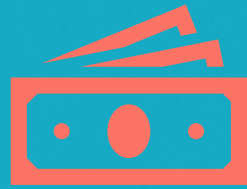
How You Can Help



What We Do



Financial Assistance to tenants who are unable to pay rent or essential utilities due unexpected short-term crisis.



Support for tenants who are unable to pay damage deposits or first month's rent.



Critical Supports that can lead to more stabilized and sustainable housing.



Our goal is to provide an Island based rent bank service to:

City of Nanaimo

Regional District of Nanaimo

Municipalities: Lantzville, Parksville, Qualicum Beach

Population Centres: Nanoose Bay, Hilliers,
Bowser, South Wellington, Gabriola

Mt. Waddington Regional District

Municipalities: Alert Bay, Port McNeil, Port Alice, Port Hardy

Population Centres: Sointula, Quatsino,
Coal Harbour, Woss

Alberni-Clayquot Regional District

Municipalities: Tofino, Ucluelet, Port Alberni

Population Centres: Bamfield

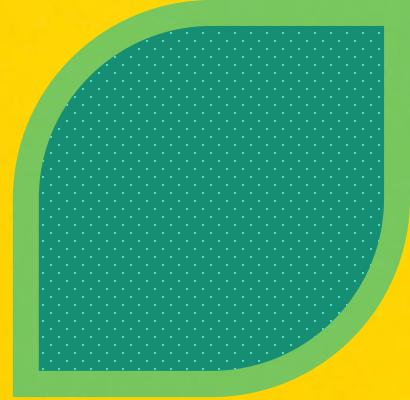
Strathcona Regional District

Municipalities: Campbell River

Population Centres: Sayward, Gold River,
Tahsis, Zeballos, Quadra Island



Currently Connective
Nanaimo's Rent Bank covers;
City of Nanaimo
Regional District of Nanaimo



Why Connective Nanaimo

- Currently those BC communities without a rent bank are served by the Kamloops and District Elizabeth Fry Society
- Rent Bank BC has asked us to provide a local service for Vancouver Islanders.
- We will have local partners in the communities we serve who can assist those who are not computer literate or face other barriers to make an application to Rent Bank or liaise with our Nanaimo based office to facilitate applications
- We will conduct a communications campaign so that residents of these communities know that the Rent Bank resource is available to them in times of need.
- We provide quarterly reports to our local funding partners so they know how their money is being used.

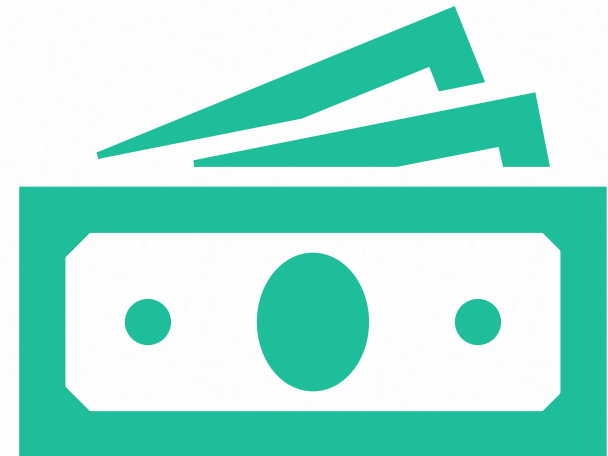
Cost of Program to serve Nanaimo and Regional District of Nanaimo 2021/22

Loan Capital (City of Nanaimo funded)
\$116,000

Annual Operating Costs (funded by Rent Bank BC)
Current – \$65,780

Projected costs to serve central and north Island
Annual Operating costs - \$32,000

Capital requirements \$100,000 approx



Our request

- An annual contribution of \$10,000