

N
W — E
S

NAD 1983 UTM Zone 10N

Kilometers

0 0.1 0.2 0.4

Land Use Legend

Land Uses

- P Potential Park
- Civic
- Commercial
- Comprehensive Development Area
- Conservation
- Industry
- Parks, Trails, and Open Space
- Residential
- Rural
- Salmon Beach

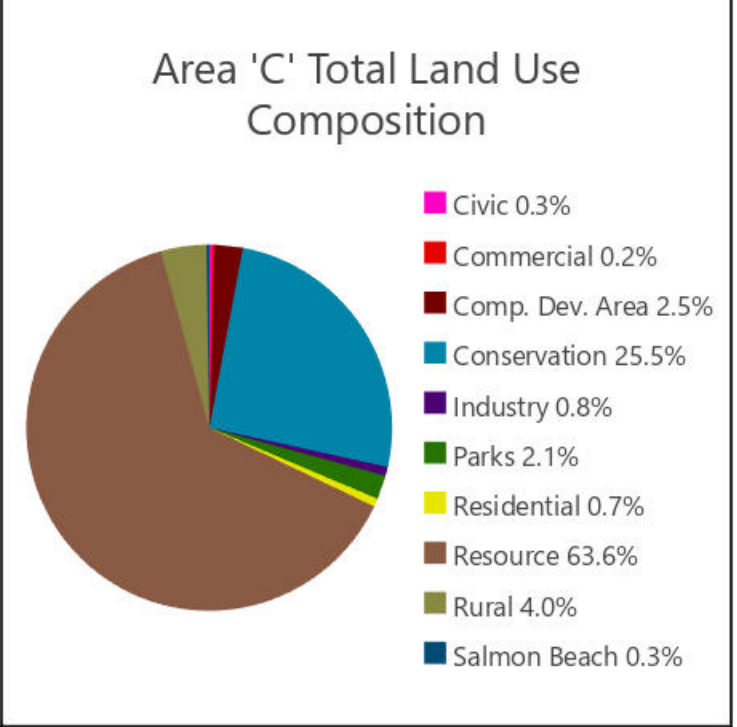
Basemap Elements

- Provincial Digital Roads Atlas
- ParcelMap BC Parcels
- Official Community Plan Area
- ParcelMap BC Plans
- Other Jurisdictions (OCP Does Not Apply)
- Water
- Wetland

Map Notes

The specific location of potential parks or protected areas to be dedicated through the subdivision process will be determined as part of the review of new development and subdivision proposals. The general locations of these areas are shown by the letter "P" and are schematic or conceptual only.

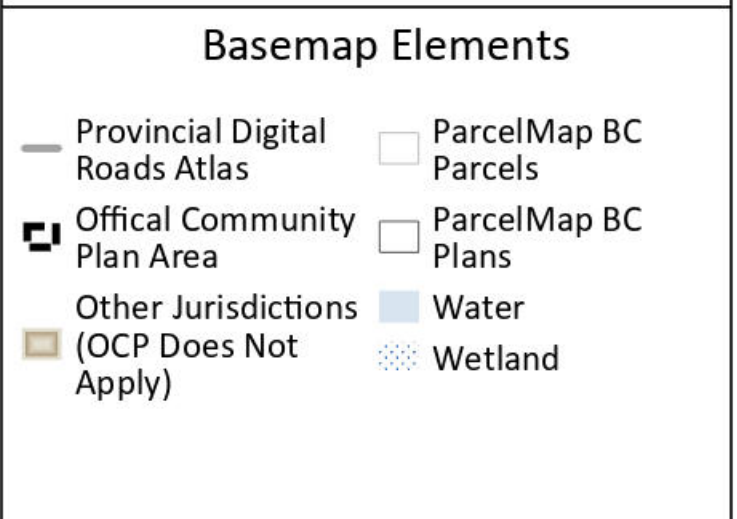
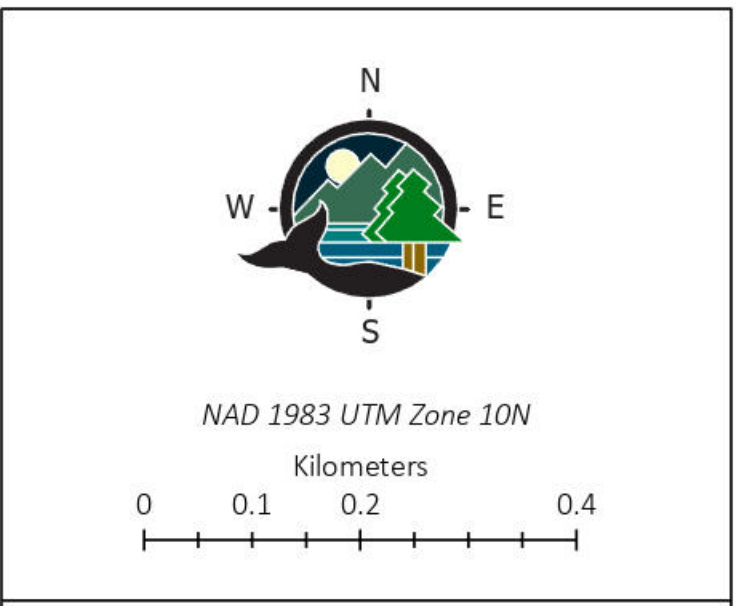
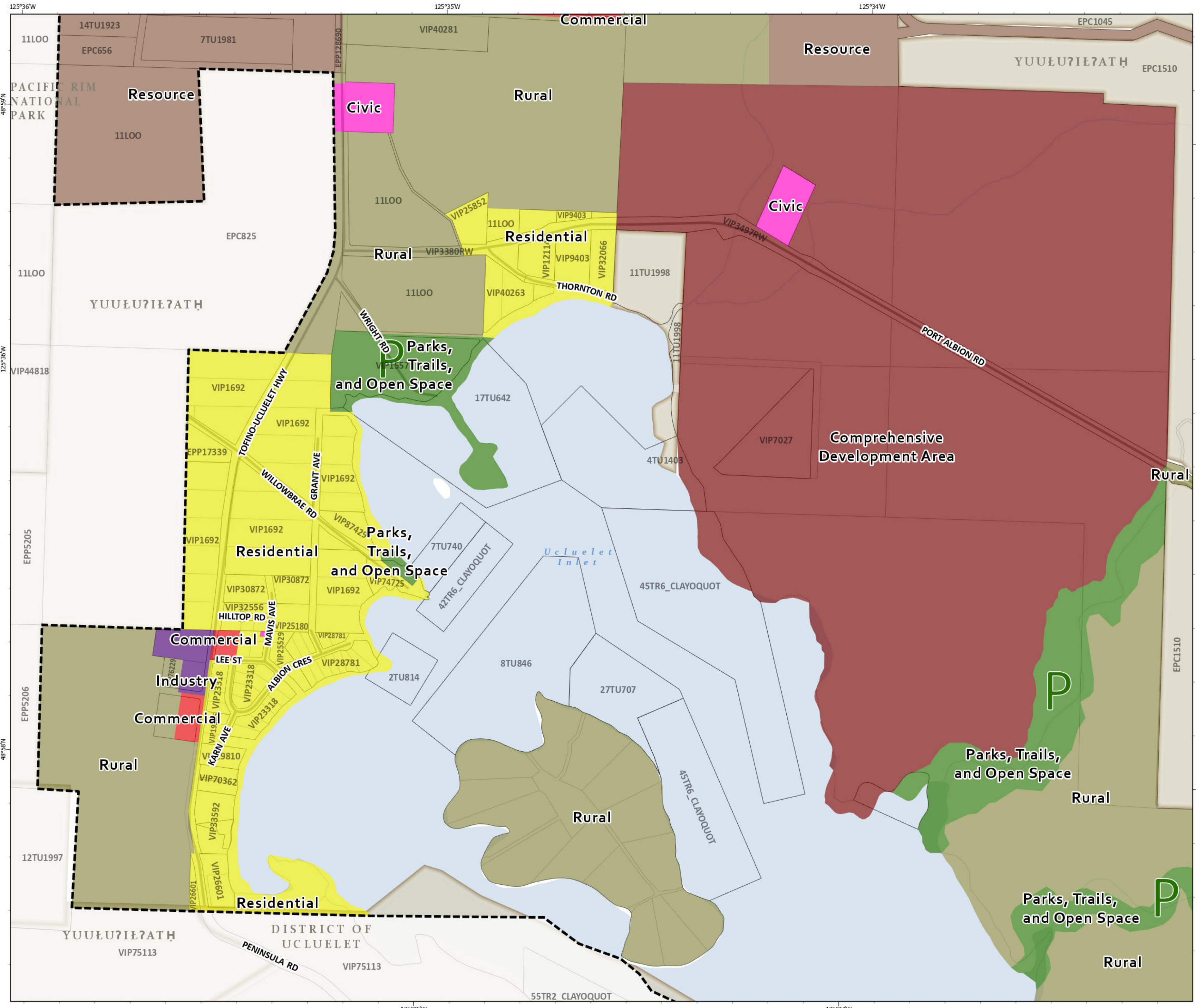
For map clarity, land use boundaries are adjusted to align to parcel boundaries or the extent of provincially mapped water bodies, when adjacent.



Schedule B: Map 1.1 Land Use Designations - The Junction
 Forming part of Area C Official Community Plan Bylaw No. P1539, 2026

This map was prepared by the ACRD for planning purposes only and should not be used for navigation.

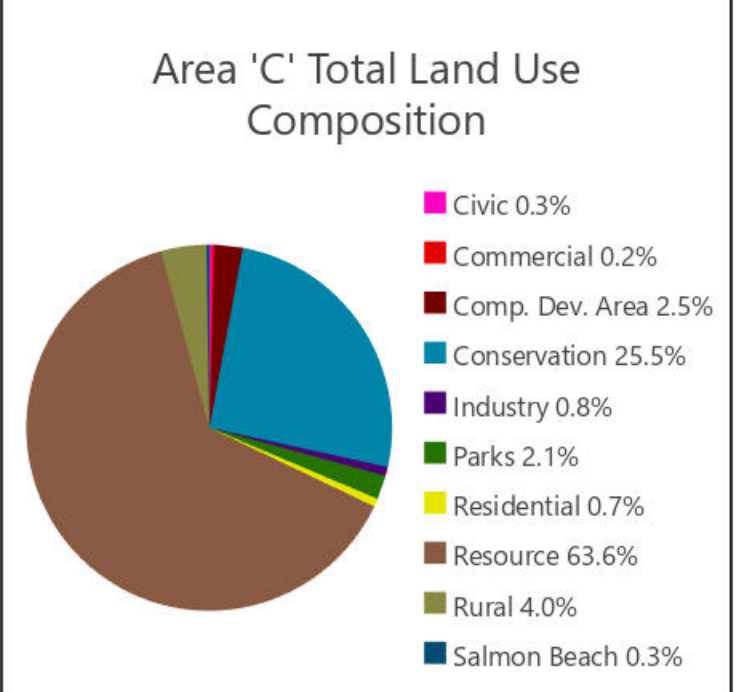
Exported: 2026-05-06 10:06 AM C:\GIS\Projects\OCP\Bylaw Area C\Area C.aprx\Area C.aprx\Map 1.1 Land Use



Map Notes

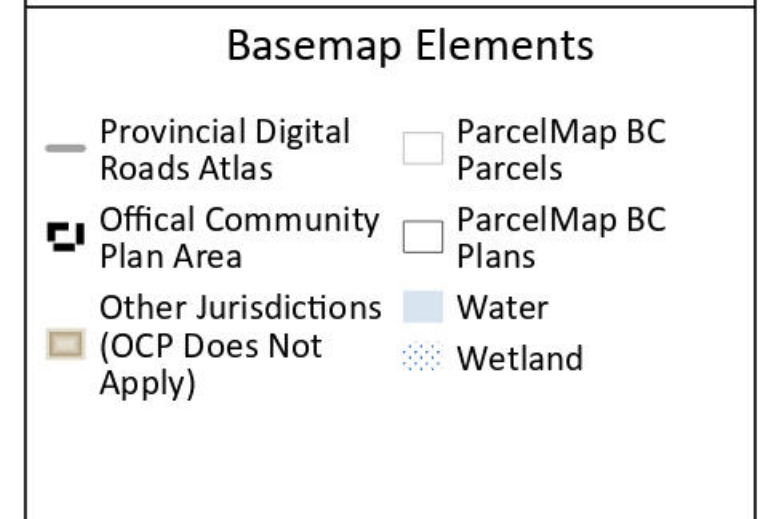
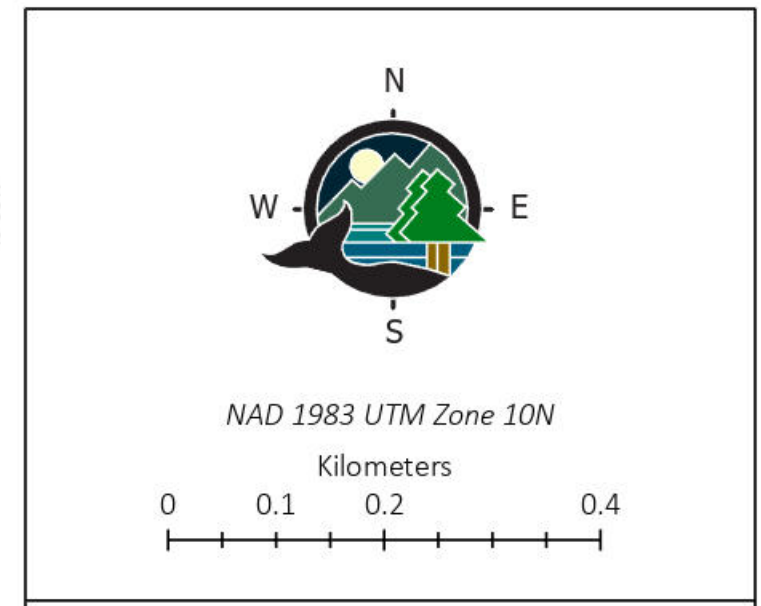
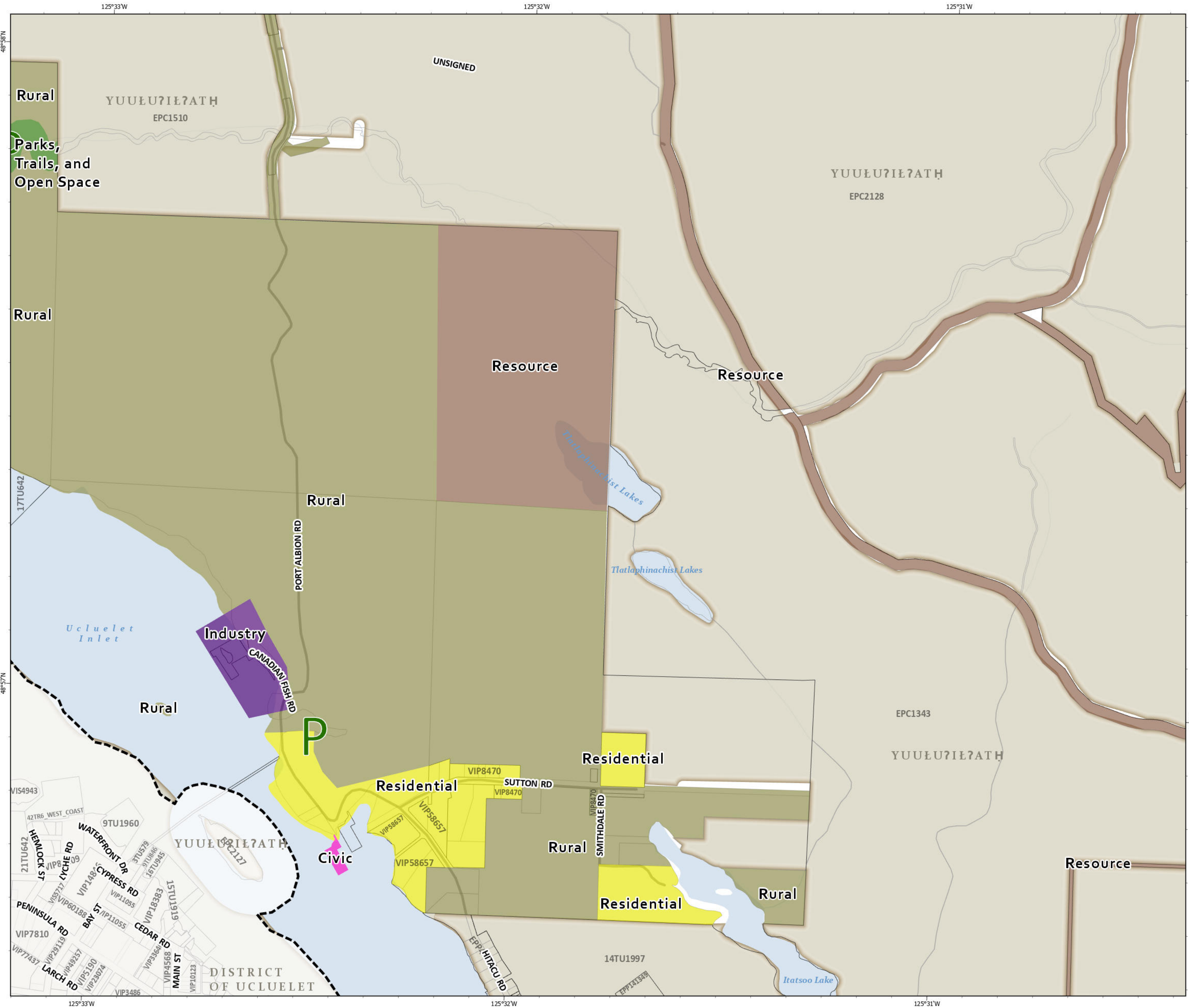
The specific location of potential parks or protected areas to be dedicated through the subdivision process will be determined as part of the review of new development and subdivision proposals. The general locations of these areas are shown by the letter "P" and are schematic or conceptual only.

For map clarity, land use boundaries are adjusted to align to parcel boundaries or the extent of provincially mapped water bodies, when adjacent.



Schedule B: Map 1.2 Land Use Designations - Millstream
 Forming part of Area C Official Community Plan Bylaw No. P1539, 2026

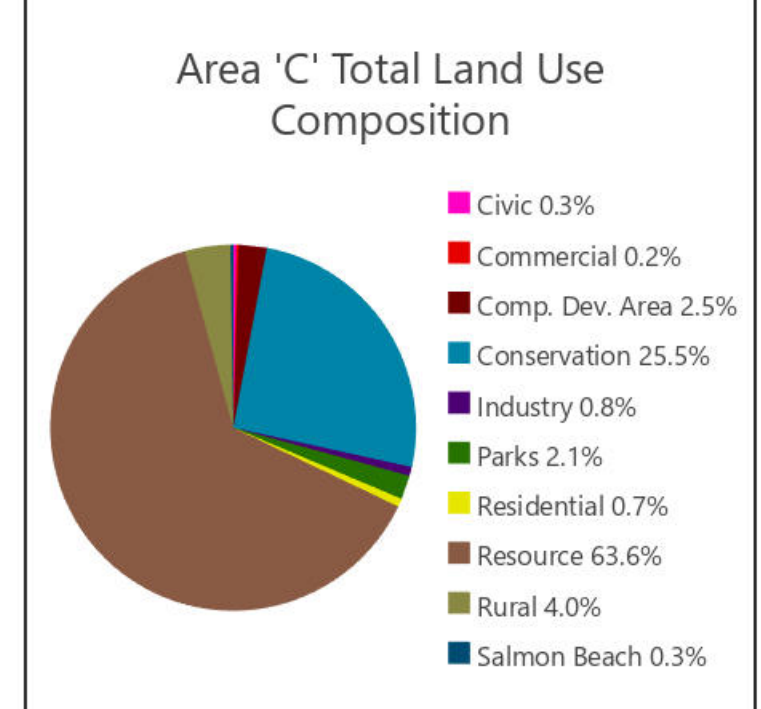
This map was prepared by the ACRD for planning purposes only and should not be used for navigation.



Map Notes

The specific location of potential parks or protected areas to be dedicated through the subdivision process will be determined as part of the review of new development and subdivision proposals. The general locations of these areas are shown by the letter "P" and are schematic or conceptual only.

For map clarity, land use boundaries are adjusted to align to parcel boundaries or the extent of provincially mapped water bodies, when adjacent.



Schedule B: Map 1.3 Land Use Designations - Port Albion
Forming part of Area C Official Community Plan Bylaw No. P1539, 2026

This map was prepared by the ACRD for planning purposes only and should not be used for navigation.

Exported: 2026-05-06 10:06:00 AM C:\GIS\Projects\OCP\Bylaw Area C\OCP\Bylaw Area C.aprx\Area C Land Use

