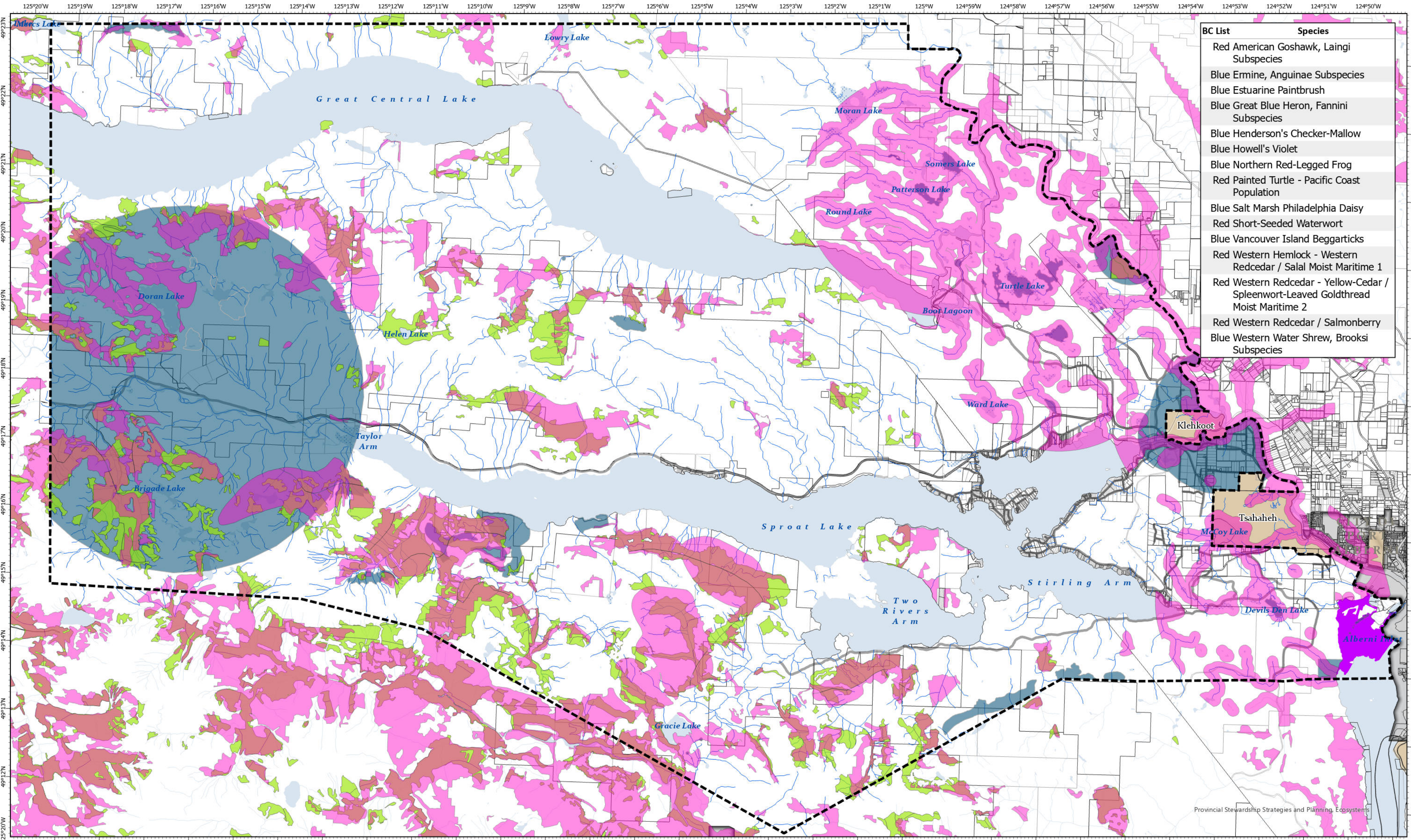


Riparian Areas Legend	Basemap Elements	Map Notes	Scale & Orientation
<ul style="list-style-type: none"> ACRD Stream Atlas Stream with Fish Observation Lakes & Rivers Wetlands 	<ul style="list-style-type: none"> Provincial Digital Roads Atlas Official Community Plan Area Municipality or Treaty Land (OCP Does Not Apply) ParcelMap BC Parcels ParcelMap BC Plans Reserve Community (OCP Does Not Apply) Water 	<p>Where local-level watercourse data was unavailable, the BC Freshwater Atlas (FWA) Streams, Rivers, Lakes and Wetlands datasets were used. The ACRD Stream Atlas was used in addition to or instead of BC FWA streams. The ACRD Stream Atlas consists of streams mapped and sampled in 1999, and FWA streams with spatially improved watercourse centerlines based on high resolution digital elevation models.</p>	<p>NAD 1983 UTM Zone 10N Kilometers 0 1 2 4</p>

Exported: 2026-05-22 11:05:22 C:\GIS_Projects\OCP Bylaw Area D\OCP Bylaw Area D\Map 1\Map 1 Riparian Areas



BC List	Species
	Red American Goshawk, Laingi Subspecies
	Blue Emrine, Anguinae Subspecies
	Blue Estuarine Paintbrush
	Blue Great Blue Heron, Fannini Subspecies
	Blue Henderson's Checker-Mallow
	Blue Howell's Violet
	Blue Northern Red-Legged Frog
	Red Painted Turtle - Pacific Coast Population
	Blue Salt Marsh Philadelphia Daisy
	Red Short-Seeded Waterwort
	Blue Vancouver Island Beggarticks
	Red Western Hemlock - Western Redcedar / Salal Moist Maritime 1
	Red Western Redcedar - Yellow-Cedar / Spleenwort-Leaved Goldthread Moist Maritime 2
	Red Western Redcedar / Salmonberry
	Blue Western Water Shrew, Brooksii Subspecies

Sensitive Habitats Legend

	Critical Habitat
	Estuary
	Priority Old Growth Forest Ecosystems
	Red & Blue Listed Species at Risk

Basemap Elements

	Provincial Digital Roads Atlas		ParcelMap BC Plans
	Official Community Plan Area		Reserve Community (OCP Does Not Apply)
	Municipality or Treaty Land (OCP Does Not Apply)		Water
	ParcelMap BC Parcels		Wetland

Map Notes

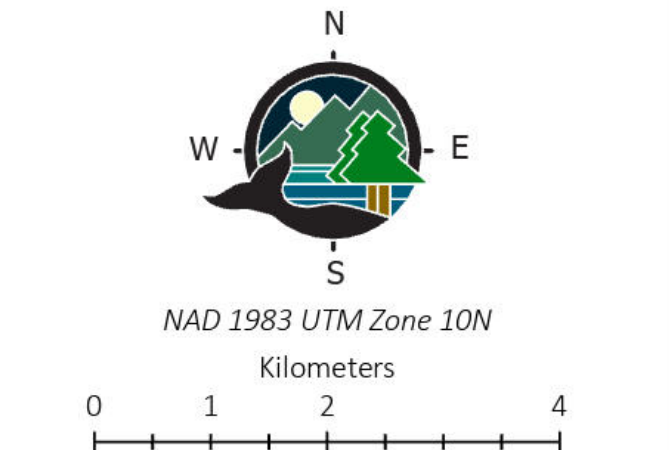
Critical habitat is defined in the federal Species at Risk Act (SARA) as "the habitat that is necessary for the survival or recovery of a listed wildlife species and that is identified as the species' critical habitat in the recovery strategy or action plan for the species". Critical habitats within the Plan Area include those for Marbled Murrelet and Western Painted Turtle.

The provincial Old Growth Technical Advisory Panel (TAP) conducted spatial analysis to identify priority old growth harvesting deferral areas having the biggest-treed old growth ecosystems, ancient forests, and old forest ecosystems.

Environment Canada. (2024). Critical Habitat for federally listed species at risk (posted) [Data set]. BC Data Catalogue. (Accessed 2026-03).

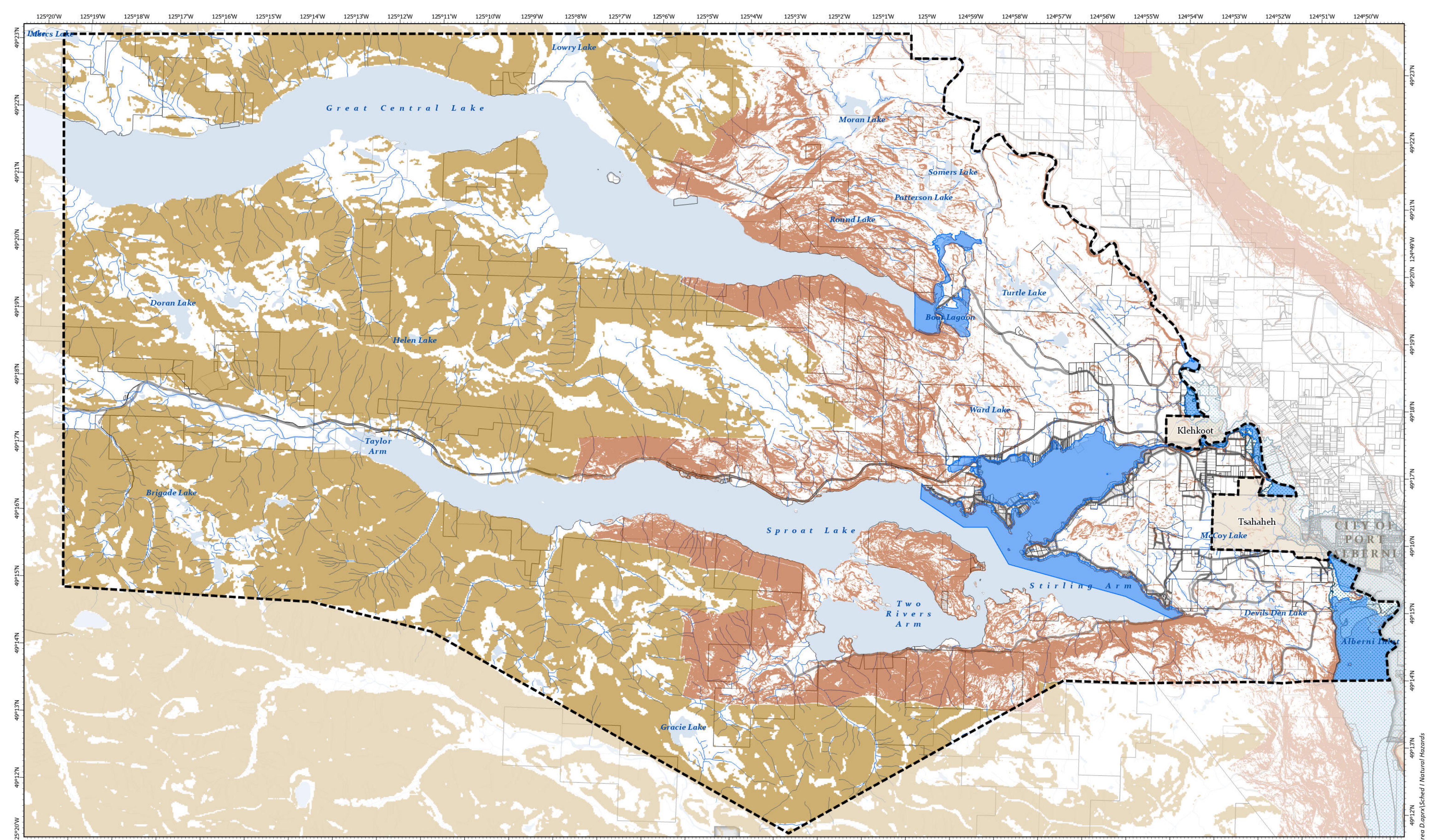
Old Growth BC. (2022). Old Growth Technical Advisory Panel (TAP) - Priority Deferral Areas – Current View [Data set]. BC Data Catalogue. (Accessed 2026-03).

B.C. Conservation Data Centre. (Ongoing). Species and Ecosystems at Risk - Publicly Available Occurrences - CDC [Data Set]. BC Data Catalogue. (Accessed 2026-03).



Schedule H: Map 1 Sensitive Habitats
Forming part of Sproat Lake and Area Official Community Plan Bylaw No. P1540, 2026

This map was prepared by the ACRD for planning purposes only and should not be used for navigation.



- ### Natural Hazards Legend
- Floodplain (200 yr)
 - >30% Slope (Lidar Derived)
 - >30% Slope (>30% Slope (Medium resolution DEM derived))
 - 20m Elevation Tsunami Zone

- ### Basemap Elements
- Provincial Digital Roads Atlas
 - Official Community Plan Area
 - Municipality or Treaty Land (OCP Does Not Apply)
 - ParcelMap BC Parcels
 - ParcelMap BC Plans
 - Reserve Community (OCP Does Not Apply)
 - Water


Map Notes

LidarBC. (2023). DEM Index – 1:20000 [Data set]. Ministry of Water, Land, and Resource Stewardship.

Government of Canada; Natural Resources Canada; Strategic Policy and Innovation Sector. (2025-06-20). Medium Resolution Digital Elevation Model (MRDEM) - CanElevation Series. [Data set]. Geo.ca.

Northwest Hydraulic Consultants Ltd. (2020): Somass Watershed Flood Management Plan. Prepared for the Alberni-Clayoquot Regional District.

GeoBC. (2003). TRIM Contour Lines [Data set]. BC Data Catalogue. (Accessed 2026-03)



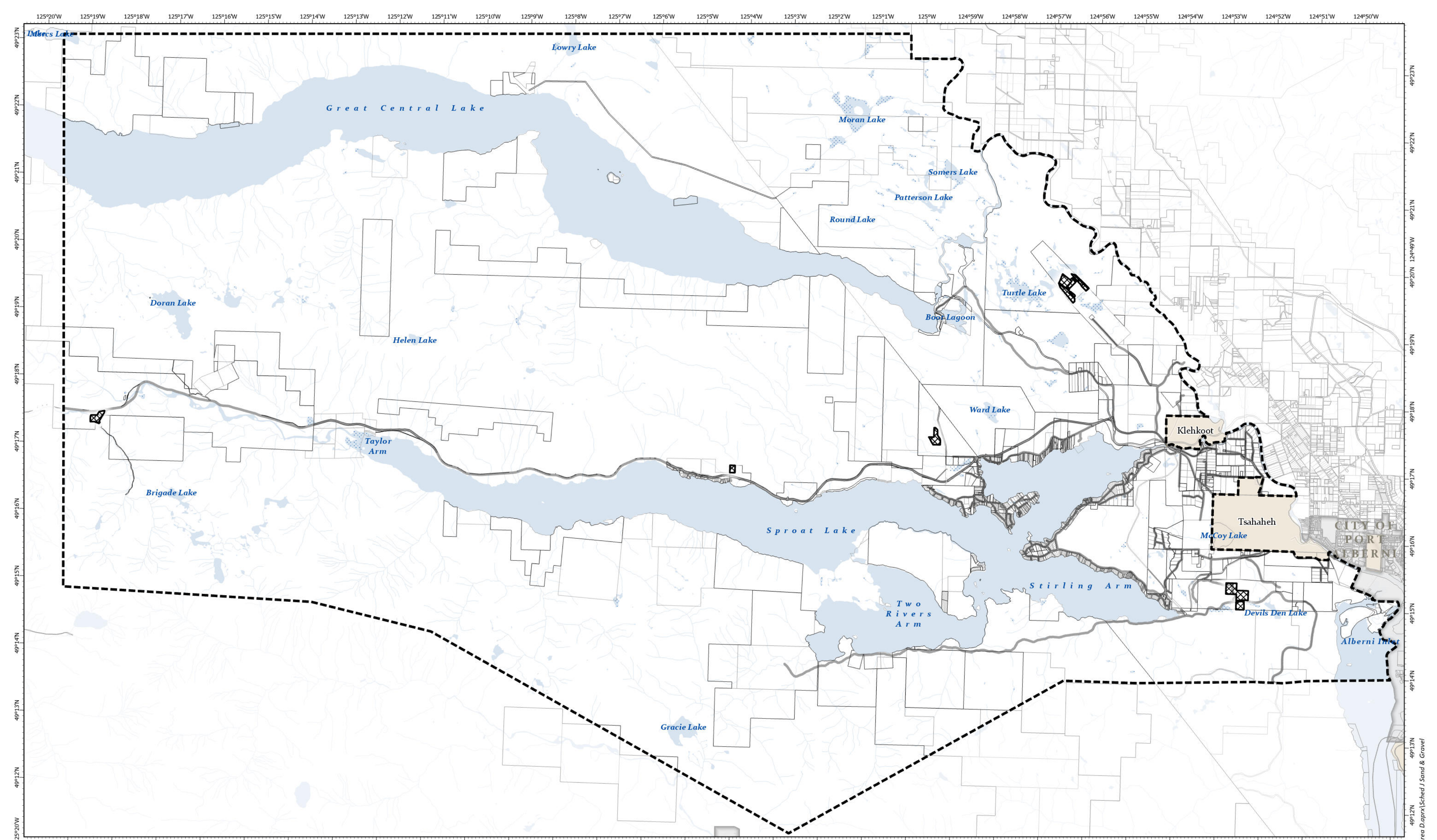
NAD 1983 UTM Zone 10N

Kilometers

0 1 2 4

Schedule I: Map 1 Natural Hazards
 Forming part of Sproat Lake and Area Official Community Plan Bylaw No. P1540, 2026

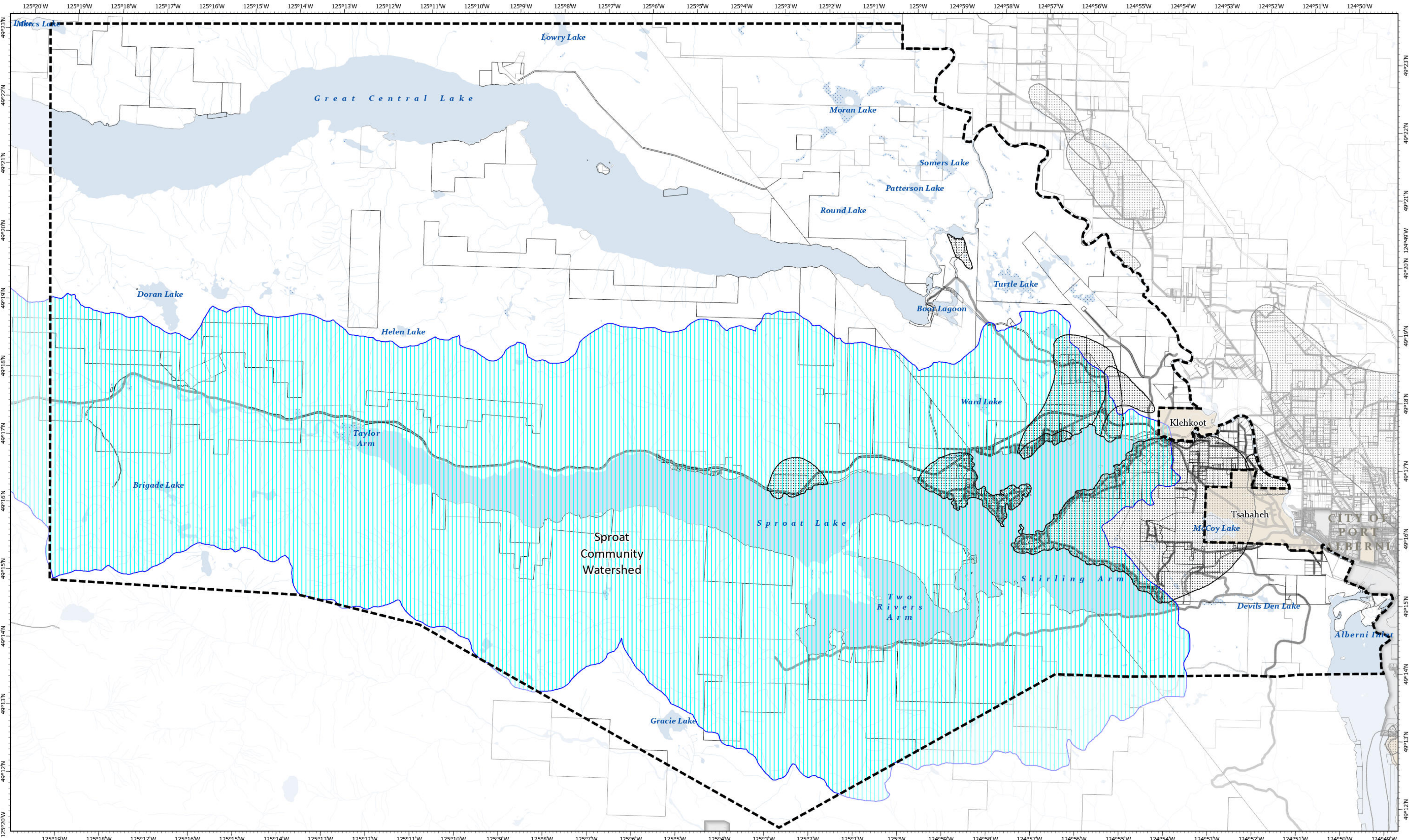
This map was prepared by the ACRD for planning purposes only and should not be used for navigation.



<p>Legend</p> <ul style="list-style-type: none"> Sand and Gravel 		<p>Basemap Elements</p> <ul style="list-style-type: none"> Provincial Digital Roads Atlas Official Community Plan Area Municipality or Treaty Land (OCP Does Not Apply) ParcelMap BC Parcels ParcelMap BC Plans Reserve Community (OCP Does Not Apply) Water Wetland 		<p> NAD 1983 UTM Zone 10N Kilometers 0 1 2 4</p>	
---	--	---	--	--	--

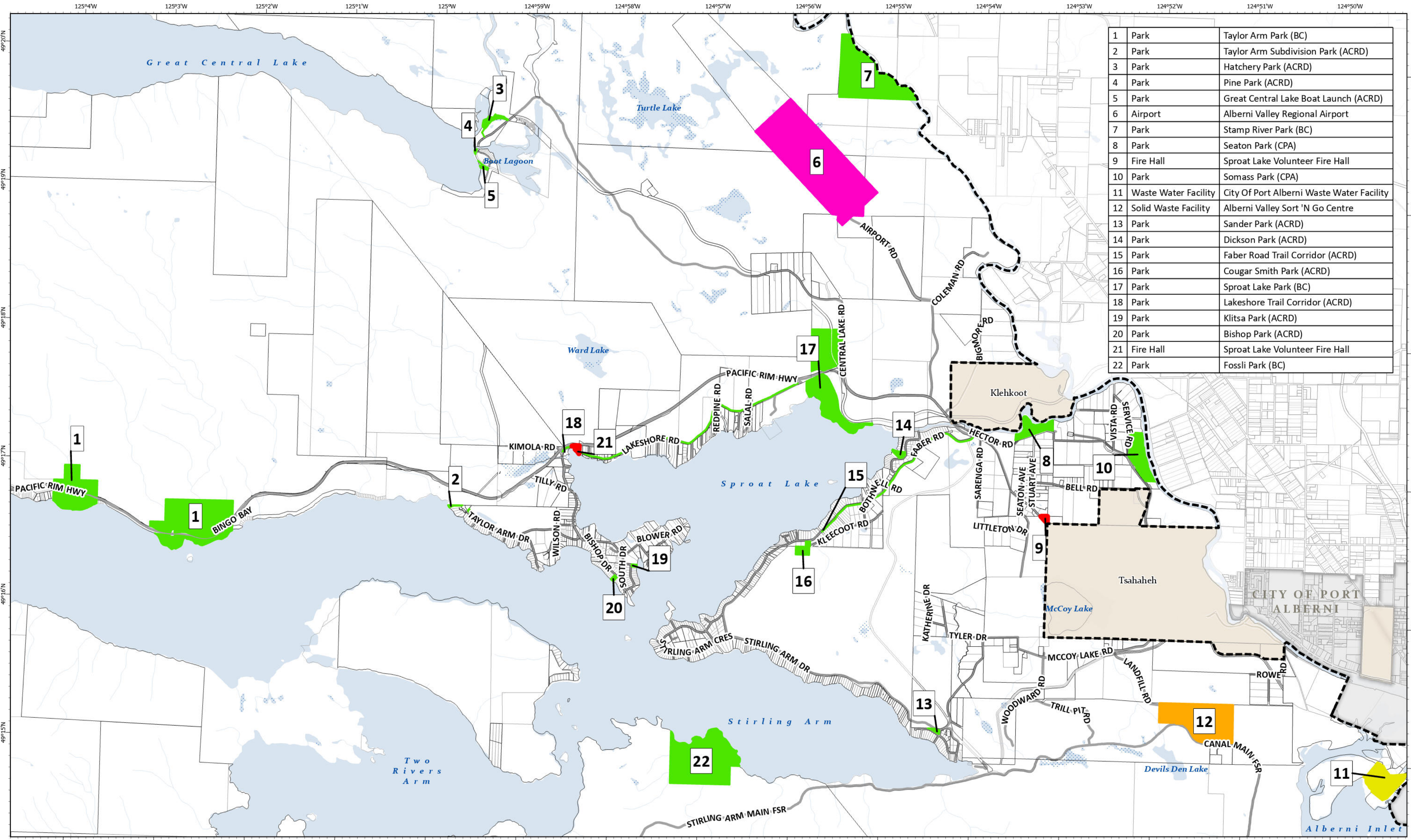
Schedule J: Map 1 Sand and Gravel
Forming part of Sproat Lake and Area Official Community Plan Bylaw No. P1540, 2026

This map was prepared by the ACRD for planning purposes only and should not be used for navigation.



<h3>Drinking Water Sources Legend</h3> <ul style="list-style-type: none"> Ground Water Aquifers Community Watersheds 	<h3>Basemap Elements</h3> <ul style="list-style-type: none"> Provincial Digital Roads Atlas Official Community Plan Area Municipality or Treaty Land (OCP Does Not Apply) ParcelMap BC Parcels ParcelMap BC Plans Reserve Community (OCP Does Not Apply) Water Wetland 	<h3>Map Notes</h3> <p>Ministry of Forests, Lands, Natural Resource Operations, and Rural Development. (2009). Community Watersheds - Current [Data set]. BC Data Catalogue. (Accessed 2026-03).</p> <p>Ministry of Water, Land, and Resource Stewardship. (2025). Ground Water Aquifers [Data set]. BC Data Catalogue. (Accessed 2026-03).</p>	<p>N W E S</p> <p>NAD 1983 UTM Zone 10N Kilometers 0 1 2 4</p>
--	--	--	--

Exported: 2026-05-22 11:05:22 C:\GIS_Projects\OCP_Bylaw Area D\OCP_Bylaw Area D.aprx [Schd. K Drinking Water



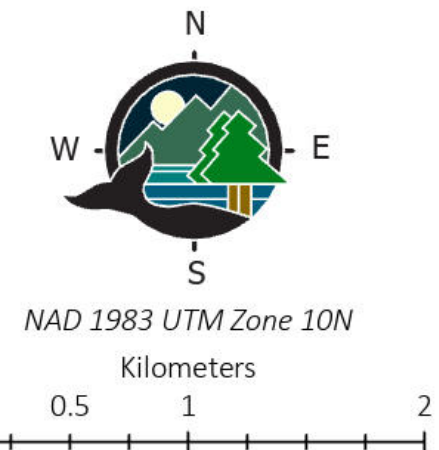
1	Park	Taylor Arm Park (BC)
2	Park	Taylor Arm Subdivision Park (ACRD)
3	Park	Hatchery Park (ACRD)
4	Park	Pine Park (ACRD)
5	Park	Great Central Lake Boat Launch (ACRD)
6	Airport	Alberni Valley Regional Airport
7	Park	Stamp River Park (BC)
8	Park	Seaton Park (CPA)
9	Fire Hall	Sproat Lake Volunteer Fire Hall
10	Park	Somass Park (CPA)
11	Waste Water Facility	City Of Port Alberni Waste Water Facility
12	Solid Waste Facility	Alberni Valley Sort 'N Go Centre
13	Park	Sander Park (ACRD)
14	Park	Dickson Park (ACRD)
15	Park	Faber Road Trail Corridor (ACRD)
16	Park	Cougar Smith Park (ACRD)
17	Park	Sproat Lake Park (BC)
18	Park	Lakeshore Trail Corridor (ACRD)
19	Park	Klitsa Park (ACRD)
20	Park	Bishop Park (ACRD)
21	Fire Hall	Sproat Lake Volunteer Fire Hall
22	Park	Fossil Park (BC)

Public Facilities Legend

	Airport
	Solid Waste Facility
	Park
	Waste Water Facility
	Fire Hall

Basemap Elements

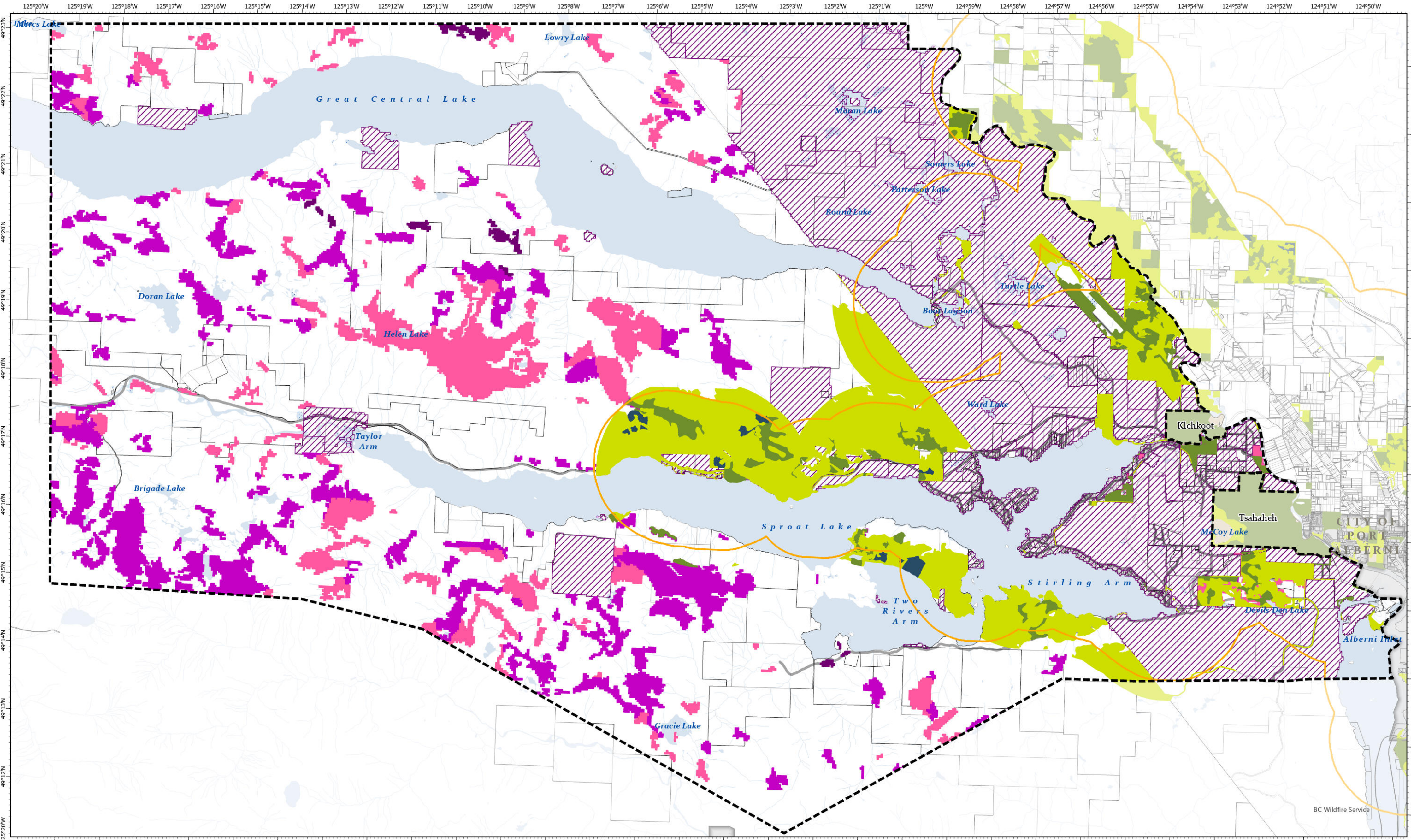
	Provincial Digital Roads Atlas		ParcelMap BC Plans
	Official Community Plan Area		Reserve Community (OCP Does Not Apply)
	Municipality or Treaty Land (OCP Does Not Apply)		Water
	ParcelMap BC Parcels		Wetland



Schedule L: Map 1 Public Facilities
 Forming part of Sproat Lake and Area Official Community Plan Bylaw No. P1540, 2026

This map was prepared by the ACRD for planning purposes only and should not be used for navigation.

Exported: 2026-05-22 11:05:22 C:\GIS_Projects\OCP\Bylaw Area D\OCP\Bylaw Area D.aprx\Sched L Public Facilities



Wildfire Hazard Legend		
BC Wildfire Urban Interface (2km Buffer)	Local Wildfire Threat Assessment Extreme Threat	Provincial Strategic Fire Threat Analysis Extreme Threat (9-10)
High Threat	High Threat (7-8)	Moderate Threat (6)
Moderate Threat	NO DATA - Private Land	

Basemap Elements	
Provincial Digital Roads Atlas	ParcelMap BC Plans
Official Community Plan Area	Reserve Community (OCP Does Not Apply)
Municipality or Treaty Land (OCP Does Not Apply)	Water
ParcelMap BC Parcels	Wetland

Map Notes

The Wildland Urban Interface (WUI) buffer is defined as a maximum of two kilometers from the structure density class greater than 6. A two kilometre buffer distance is then applied to represent a reasonable maximum distance that embers can travel from a wildfire to ignite a structure.

B.A. Blackwell & Associates Ltd. (2019). Alberni-Clayoquot Regional District Community Wildfire Protection Plan Update. Prepared for the Alberni-Clayoquot Regional District.

BC Wildfire Service. (2019). BC Wildfire PSTA Fire Threat Rating [Data set]. BC Data Catalogue. (Accessed 2026-03).

BC Wildfire Service. (2019). BC Wildfire WUI Human Interface Buffer [Data set]. BC Data Catalogue. (Accessed 2026-03).

N
W — E
S

NAD 1983 UTM Zone 10N
Kilometers

0 1 2 4

Schedule M: Map 1 Wildfire Hazard
Forming part of Sproat Lake and Area Official Community Plan Bylaw No. P1540, 2026

This map was prepared by the ACRD for planning purposes only and should not be used for navigation.

