

DPA III Legend

- Form and Character

Basemap Elements

- Provincial Digital Roads Atlas
- Official Community Plan Area
- Municipality or Treaty Land (OCP Does Not Apply)
- ParcelMap BC Parcels
- Reserve Community (OCP Does Not Apply)
- Water
- Wetland
- ParcelMap BC Plans

Map Notes

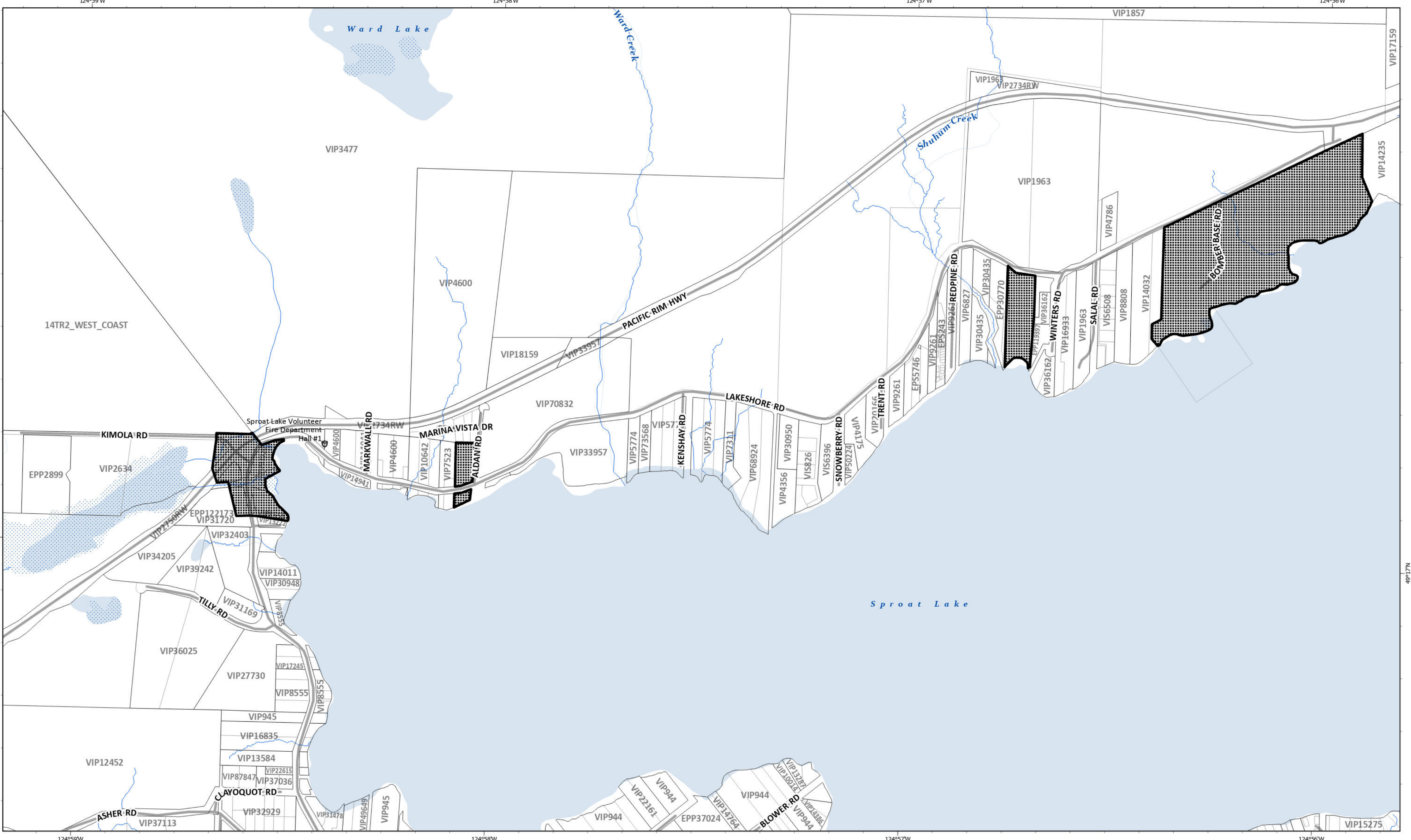
Development permits are required for commercial, industrial, multi-family residential, or intensive residential development located on lands designated within DPA III.




NAD 1983 UTM Zone 10N
Kilometers
0 0.35 0.7 1.4

Schedule E: Map 1 Development Permit Area III - Form and Character
Forming part of Sprout Lake and Area Official Community Plan Bylaw No. P1540, 2026

This map was prepared by the ACRD for planning purposes only and should not be used for navigation.



<h3>DPA III Legend</h3> <ul style="list-style-type: none"> Form and Character 	<h3>Basemap Elements</h3> <ul style="list-style-type: none"> Provincial Digital Roads Atlas Official Community Plan Area ParcelMap BC Parcels ParcelMap BC Plans Water Wetland 	<h3>Map Notes</h3> <p>Development permits are required for commercial, industrial, multi-family residential, or intensive residential development located on lands designated within DPA III.</p>
---	--	---



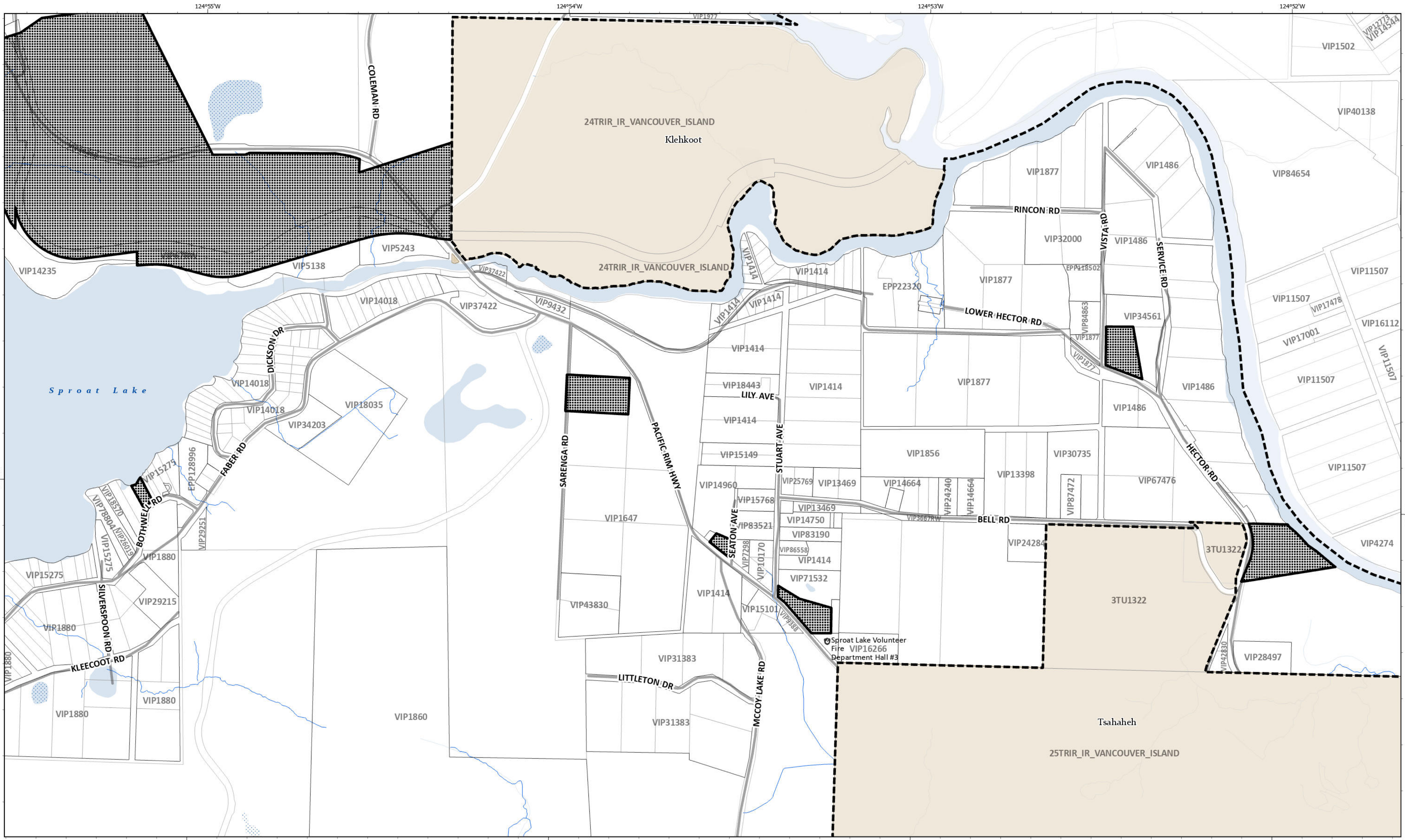
NAD 1983 UTM Zone 10N

Kilometers

0 0.1 0.2 0.4

Schedule E: Map 1.1 Development Permit Area III - Form and Character - Lakeshore Road
 Forming part of Sproat Lake and Area Official Community Plan Bylaw No. P1540, 2026

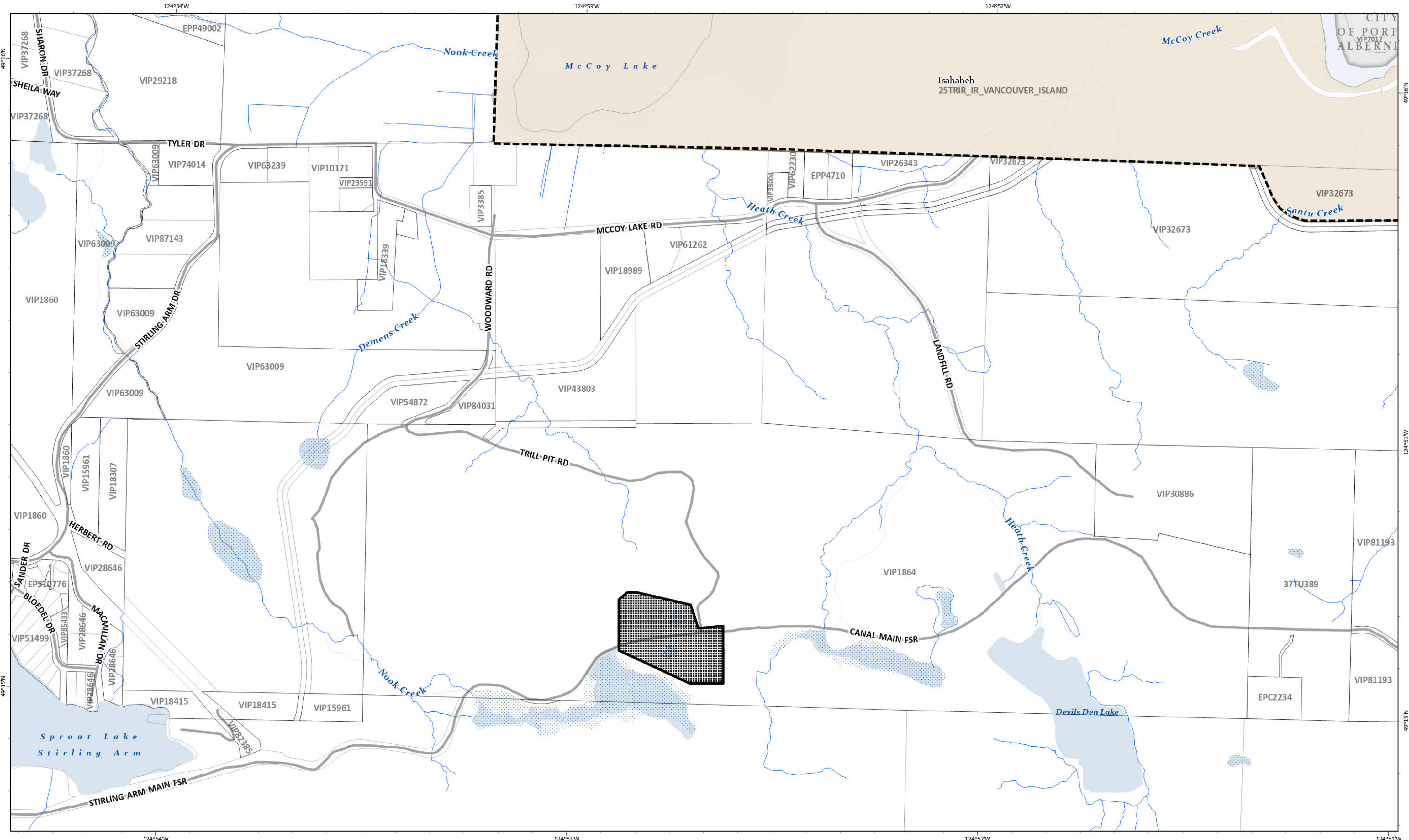
This map was prepared by the ACRD for planning purposes only and should not be used for navigation.



<h3>DPA III Legend</h3> <ul style="list-style-type: none"> Form and Character 	<h3>Basemap Elements</h3> <ul style="list-style-type: none"> Provincial Digital Roads Atlas Official Community Plan Area ParcelMap BC Parcels ParcelMap BC Plans Reserve Community (OCP Does Not Apply) Water Wetland 	<h3>Map Notes</h3> <p>Development permits are required for commercial, industrial, multi-family residential, or intensive residential development located on lands designated within DPA III.</p>	<p>N W E S</p> <p>NAD 1983 UTM Zone 10N Kilometers 0 0.13 0.25 0.5</p>
---	---	---	--

Schedule E: Map 1.2 Development Permit Area III - Form and Character - Faber & Hector Road Area
 Forming part of Sproat Lake and Area Official Community Plan Bylaw No. P1540, 2026

This map was prepared by the ACRD for planning purposes only and should not be used for navigation.



<h3>DPA III Legend</h3> <ul style="list-style-type: none"> Form and Character 	<h3>Basemap Elements</h3> <ul style="list-style-type: none"> Provincial Digital Roads Atlas Official Community Plan Area Municipality or Treaty Land (OCP Does Not Apply) ParcelMap BC Parcels ParcelMap BC Plans Reserve Community (OCP Does Not Apply) Water Wetland 	<h3>Map Notes</h3> <p>Development permits are required for commercial, industrial, multi-family residential, or intensive residential development located on lands designated within DPA III.</p>	<p>N W E S</p> <p>NAD 1983 UTM Zone 10N Kilometers 0 0.1 0.2 0.4</p>
<p>Schedule E: Map 1.3 Development Permit Area III - Form and Character - McCoy Lake Road Area Forming part of Sproat Lake and Area Official Community Plan Bylaw No. P1540, 2026</p>			<p><i>This map was prepared by the ACRD for planning purposes only and should not be used for navigation.</i></p>