

### Land Use Designations Legend

Potential Park	Comprehensive Development Area	Parks and Trails
Agriculture	Conservation	Recreational Residential
Airport	Float-Home	Residential
Civic	Industry	Resource
Commercial	Marina	Rural
	Mobile Home Park	Rural Central Lake

### Basemap Elements

Agricultural Land Reserve	ParcelMap BC Plans
Official Community Plan Area	Reserve Community (OCP Does Not Apply)
Municipality or Treaty Land (OCP Does Not Apply)	Water
ParcelMap BC Parcels	

### Map Notes

The specific location of potential parks or protected areas to be dedicated through the subdivision process will be determined as part of the review of new development and subdivision proposals. The general locations of these areas are shown by the letter "P" and are schematic or conceptual only.

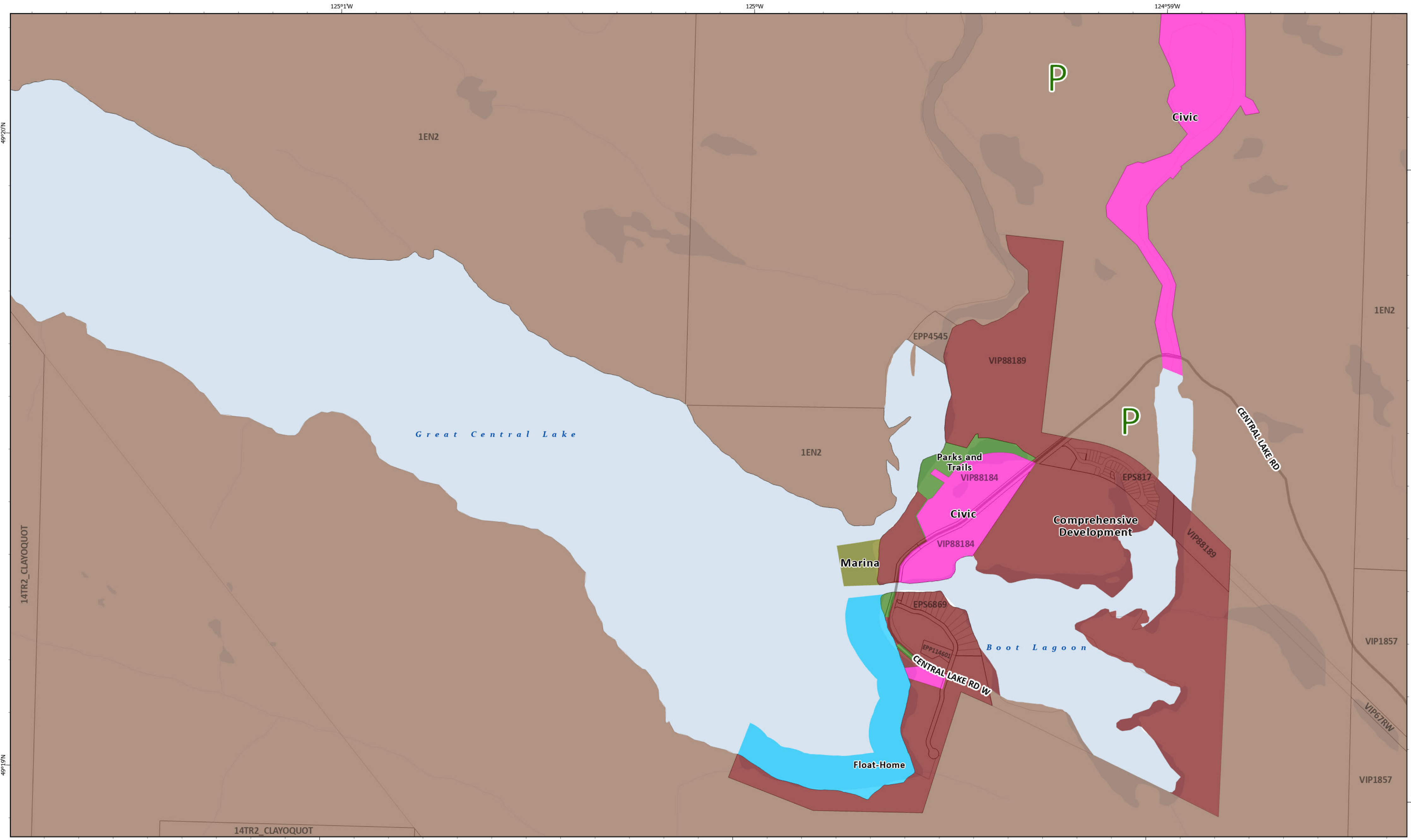
For map clarity, land use boundaries are adjusted to align to parcel boundaries or the extent of provincially mapped water bodies, when adjacent.

NAD 1983 UTM Zone 10N

Kilometers

**Schedule B: Map 1 Land Use Designations**  
 Forming part of Sproat Lake and Area Official Community Plan Bylaw No. P1540, 2026

*This map was prepared by the ACRD for planning purposes only and should not be used for navigation.*



**Land Use Designations Legend**

Potential Park	Comprehensive Development Area	Parks and Trails
Agriculture	Conservation	Recreational Residential
Airport	Float-Home	Residential
Civic	Industry	Resource
Commercial	Marina	Rural
	Mobile Home Park	Rural Central Lake

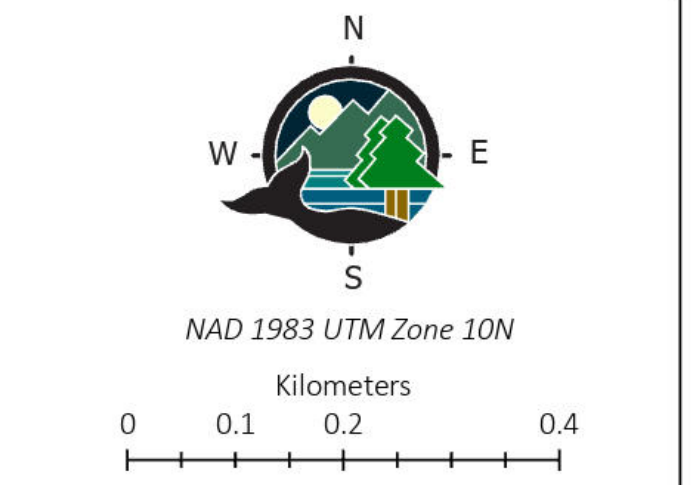
**Basemap Elements**

Official Community Plan Area
ParcelMap BC Parcels
ParcelMap BC Plans
Water

**Map Notes**

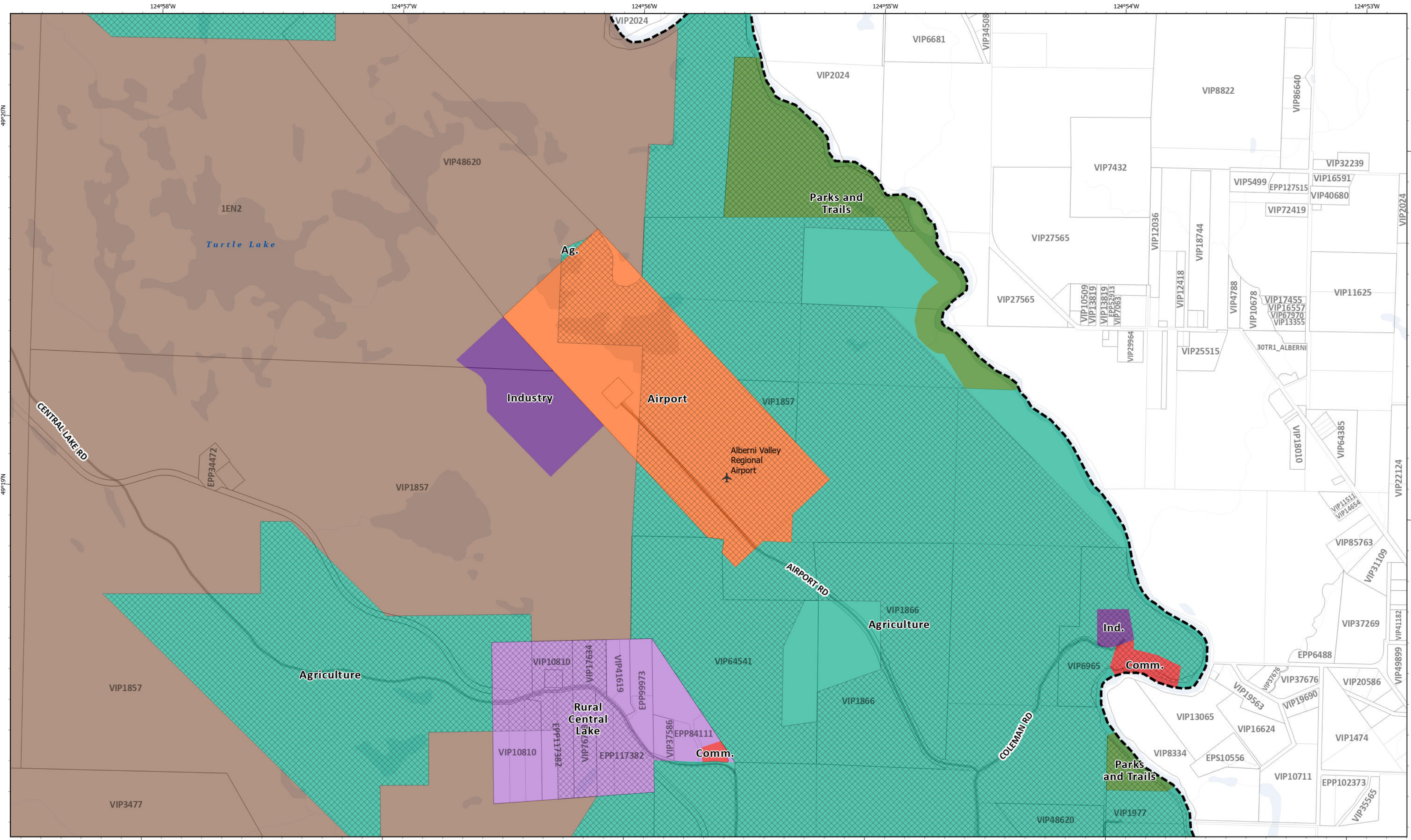
The specific location of potential parks or protected areas to be dedicated through the subdivision process will be determined as part of the review of new development and subdivision proposals. The general locations of these areas are shown by the letter "P" and are schematic or conceptual only.

For map clarity, land use boundaries are adjusted to align to parcel boundaries or the extent of provincially mapped water bodies, when adjacent.



**Schedule B: Map 1.1 Land Use Designations - Great Central Lake**  
 Forming part of Sproat Lake and Area Official Community Plan Bylaw No. P1540, 2026

*This map was prepared by the ACRD for planning purposes only and should not be used for navigation.*



### Land Use Designations Legend

Potential Park	Comprehensive Development Area	Parks and Trails
Agriculture	Conservation	Recreational Residential
Airport	Float-Home	Residential
Civic	Industry	Resource
Commercial	Marina	Rural
	Mobile Home Park	Rural Central Lake

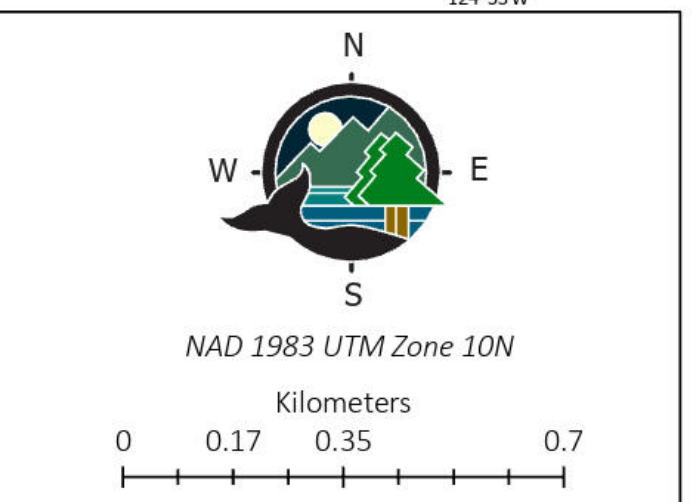
### Basemap Elements

Agricultural Land Reserve
Official Community Plan Area
ParcelMap BC Parcels
ParcelMap BC Plans
Water

### Map Notes

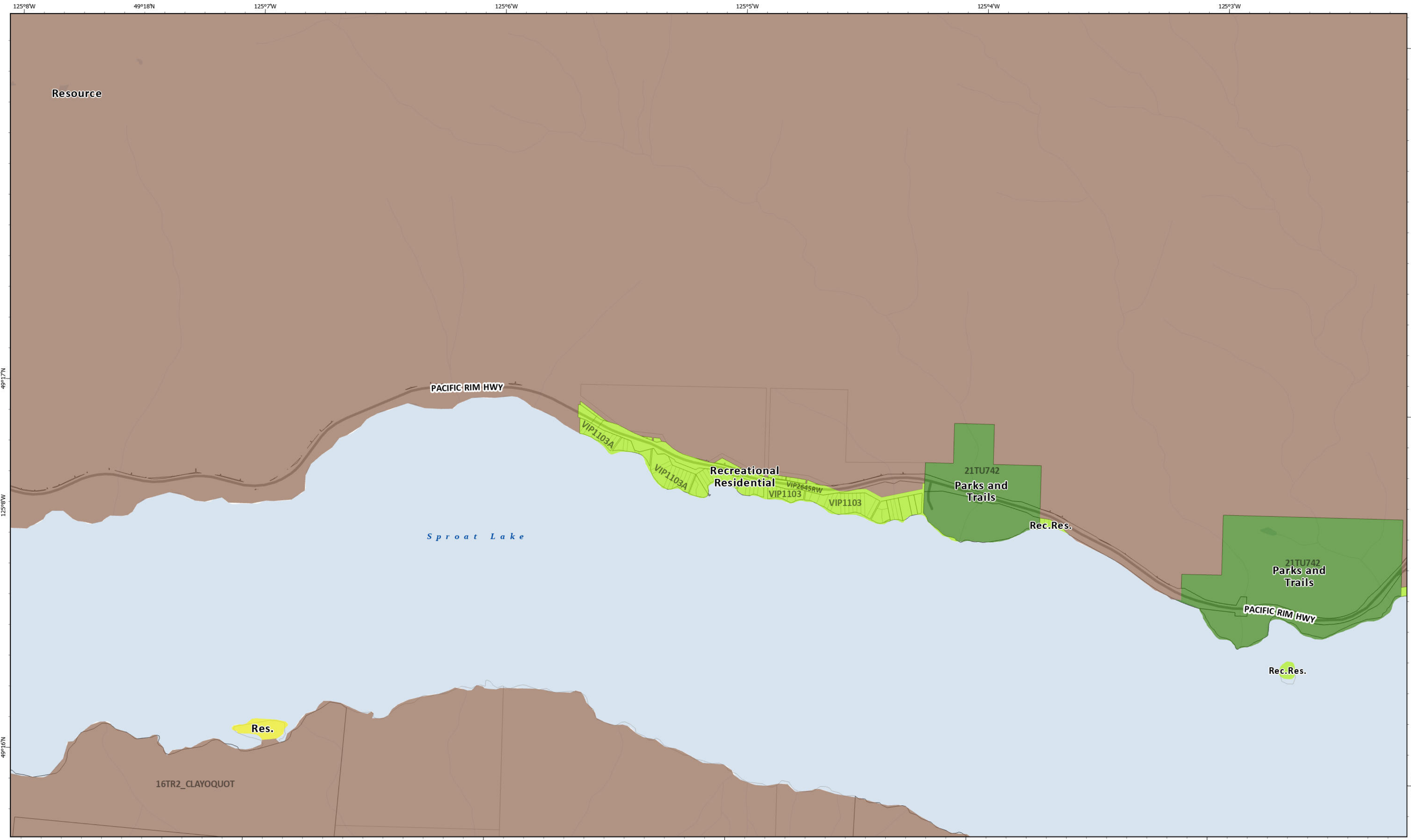
The specific location of potential parks or protected areas to be dedicated through the subdivision process will be determined as part of the review of new development and subdivision proposals. The general locations of these areas are shown by the letter "P" and are schematic or conceptual only.

For map clarity, land use boundaries are adjusted to align to parcel boundaries or the extent of provincially mapped water bodies, when adjacent.



**Schedule B: Map 1.2 Land Use Designations - Central Lake Road**  
 Forming part of Sproat Lake and Area Official Community Plan Bylaw No. P1540, 2026

*This map was prepared by the ACRD for planning purposes only and should not be used for navigation.*



### Land Use Designations Legend

Potential Park	Comprehensive Development Area	Parks and Trails
Agriculture	Conservation	Recreational Residential
Airport	Float-Home	Residential
Civic	Industry	Resource
Commercial	Marina	Rural
	Mobile Home Park	Rural Central Lake

### Basemap Elements

Official Community Plan Area
ParcelMap BC Parcels
ParcelMap BC Plans
Water

### Map Notes

The specific location of potential parks or protected areas to be dedicated through the subdivision process will be determined as part of the review of new development and subdivision proposals. The general locations of these areas are shown by the letter "P" and are schematic or conceptual only.

For map clarity, land use boundaries are adjusted to align to parcel boundaries or the extent of provincially mapped water bodies, when adjacent.

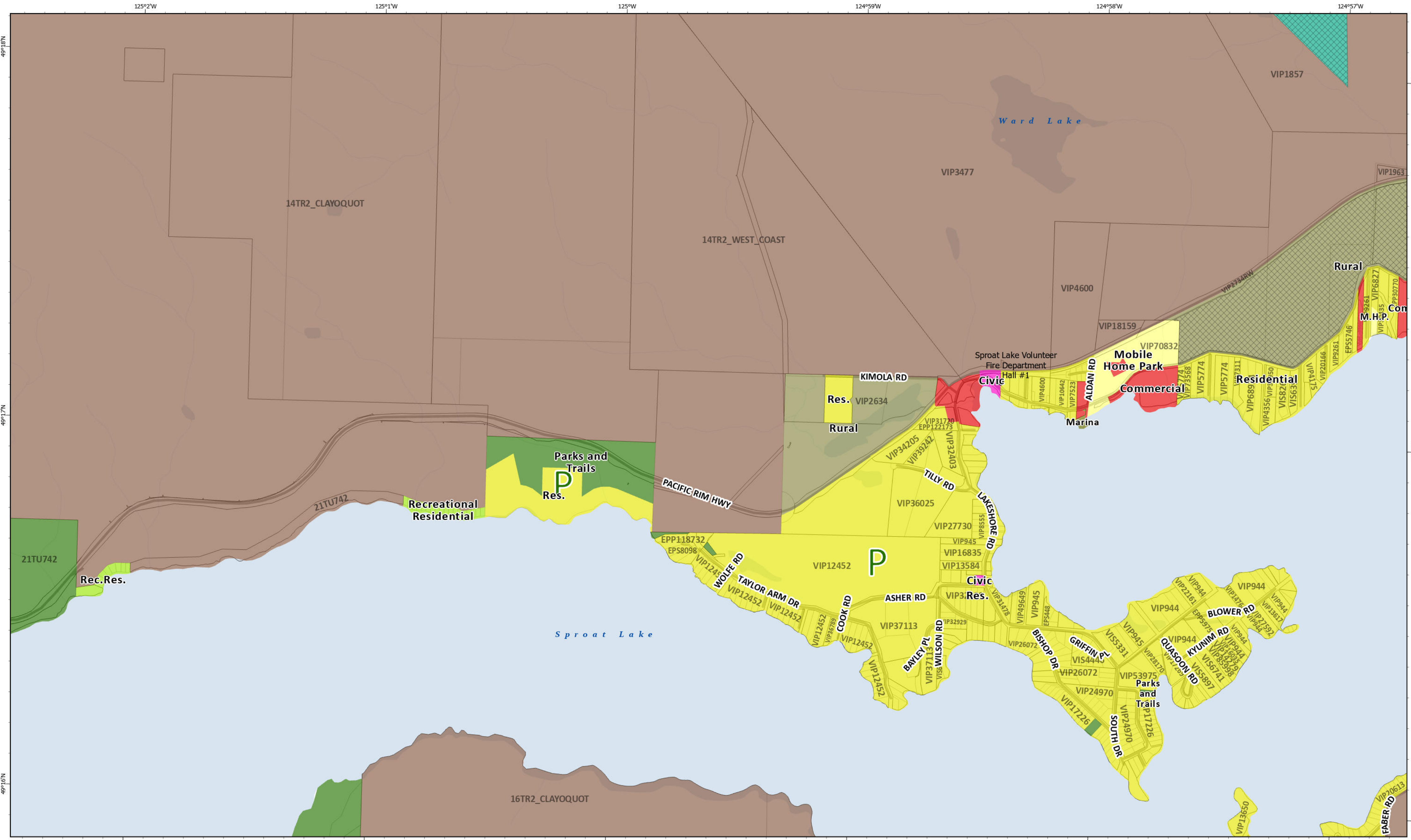
N  
W E  
S

NAD 1983 UTM Zone 10N

Kilometers  
0 0.17 0.35 0.7

**Schedule B: Map 1.3 Land Use Designations - Taylor Arm**  
Forming part of Sproat Lake and Area Official Community Plan Bylaw No. P1540, 2026

*This map was prepared by the ACRD for planning purposes only and should not be used for navigation.*



Land Use Designations Legend			Basemap Elements		Map Notes
Potential Park	Comprehensive Development Area	Parks and Trails	Agricultural Land Reserve	<p>The specific location of potential parks or protected areas to be dedicated through the subdivision process will be determined as part of the review of new development and subdivision proposals. The general locations of these areas are shown by the letter "P" and are schematic or conceptual only.</p> <p>For map clarity, land use boundaries are adjusted to align to parcel boundaries or the extent of provincially mapped water bodies, when adjacent.</p>	
Agriculture	Conservation	Recreational Residential	Official Community Plan Area		
Airport	Float-Home	Residential	ParcelMap BC Parcels		
Civic	Industry	Resource	ParcelMap BC Plans		
Commercial	Marina	Rural	Water		
Mobile Home Park	Rural Central Lake				

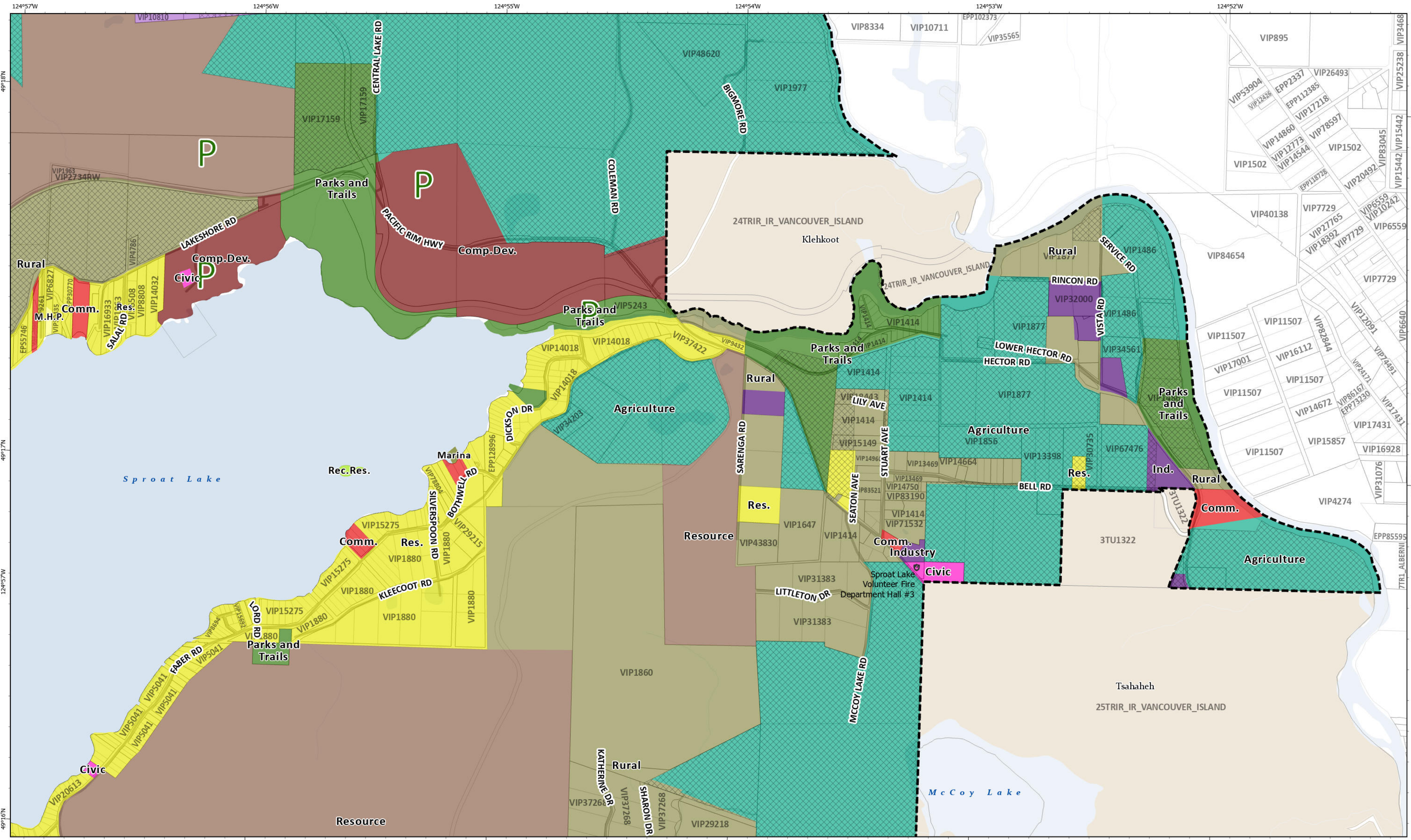
**Schedule B: Map 1.4 Land Use Designations - Lakeshore & Taylor Arm Road**  
 Forming part of Sproat Lake and Area Official Community Plan Bylaw No. P1540, 2026

NAD 1983 UTM Zone 10N

Kilometers

0 0.17 0.35 0.7

*This map was prepared by the ACRD for planning purposes only and should not be used for navigation.*



Land Use Designations Legend			Basemap Elements		Map Notes
Potential Park	Comprehensive Development Area	Parks and Trails	Agricultural Land Reserve	ParcelMap BC Plans	
Agriculture	Conservation	Recreational Residential	Official Community Plan Area	Reserve Community (OCP Does Not Apply)	
Airport	Float-Home	Residential	Municipality or Treaty Land (OCP Does Not Apply)	Water	
Civic	Industry	Resource	ParcelMap BC Parcels		
Commercial	Marina	Rural			
	Mobile Home Park	Rural Central Lake			

The specific location of potential parks or protected areas to be dedicated through the subdivision process will be determined as part of the review of new development and subdivision proposals. The general locations of these areas are shown by the letter "P" and are schematic or conceptual only.

For map clarity, land use boundaries are adjusted to align to parcel boundaries or the extent of provincially mapped water bodies, when adjacent.

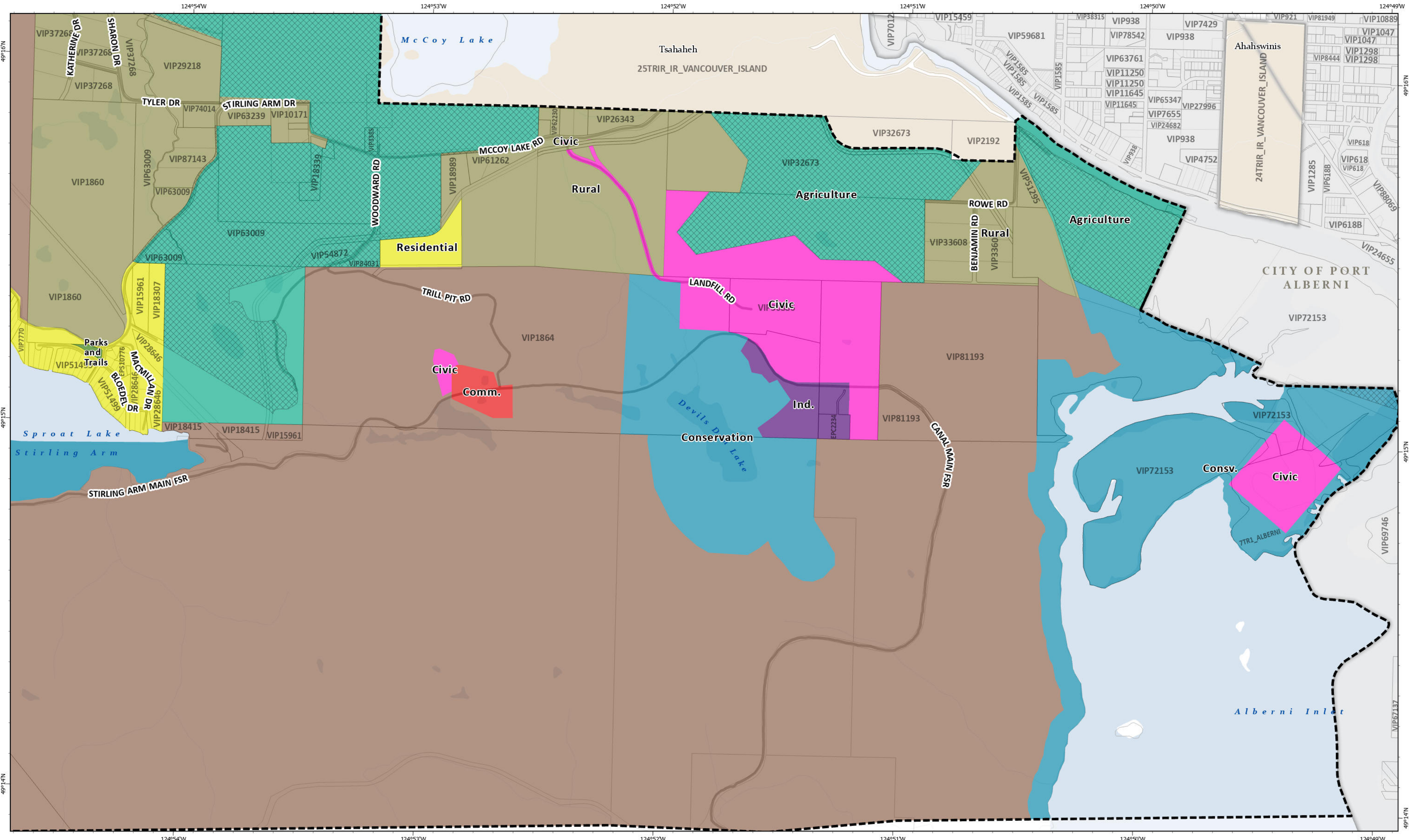


NAD 1983 UTM Zone 10N  
Kilometers  
0 0.17 0.35 0.7

**Schedule B: Map 1.5 Land Use Designations - Faber & Hector Road**  
Forming part of Sproat Lake and Area Official Community Plan Bylaw No. P1540, 2026

*This map was prepared by the ACRD for planning purposes only and should not be used for navigation.*





### Land Use Designations Legend

Potential Park	Comprehensive Development Area	Parks and Trails
Agriculture	Conservation	Recreational Residential
Airport	Float-Home	Residential
Civic	Industry	Resource
Commercial	Marina	Rural
	Mobile Home Park	Rural Central Lake

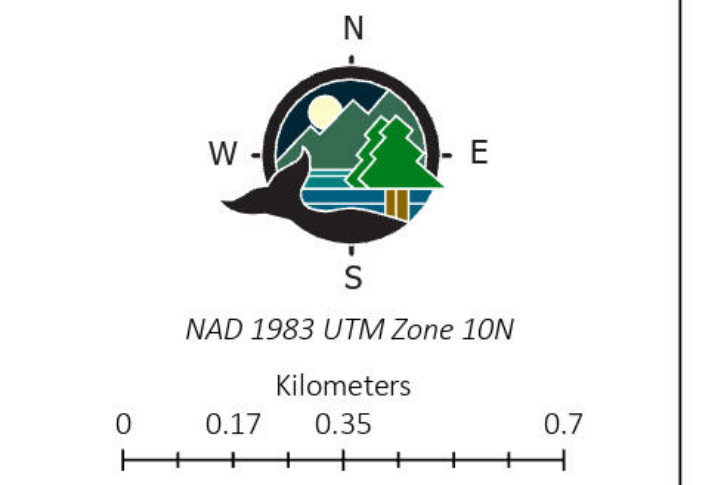
### Basemap Elements

Agricultural Land Reserve	ParcelMap BC Plans
Official Community Plan Area	Reserve Community (OCP Does Not Apply)
Municipality or Treaty Land (OCP Does Not Apply)	Water
ParcelMap BC Parcels	

### Map Notes

The specific location of potential parks or protected areas to be dedicated through the subdivision process will be determined as part of the review of new development and subdivision proposals. The general locations of these areas are shown by the letter "P" and are schematic or conceptual only.

For map clarity, land use boundaries are adjusted to align to parcel boundaries or the extent of provincially mapped water bodies, when adjacent.



**Schedule B: Map 1.7 Land Use Designations - McCoy Lake Road**  
 Forming part of Sproat Lake and Area Official Community Plan Bylaw No. P1540, 2026

*This map was prepared by the ACRD for planning purposes only and should not be used for navigation.*