

Invasive Plant Management on Provincial Public lands within the ACRD

Crystal Chadburn, P.Ag

Senior Invasive Plant Specialist

Ministry of Forests

Crystal.Chadburn@gov.bc.ca

Feb 14, 2024



PROPOSED OUTLINE:

- Invasive Plant Management
- Pest Management Plan Consultation
- Management activities within ACRD on Provincial Public Lands
- Q/A Discussion

What is an Invasive Plant?

Non-native plants that cause negative environmental impacts.

- No predators or pathogens
- Quick to establish
- Spread fast
- Outcompete native plants
- Grow in poor conditions
- Difficult to control



Yellow Flag Iris



Nearby Threats: Giant hogweed

Causes severe skin burns and blisters

Can cause blindness if sap enters the eyes

Manual removal difficult due to deep taproot and PPE requirements

Easily confused with Cow Parsnip – high risk!



Nearby Threats:

Poison Hemlock



Wild Parsnip

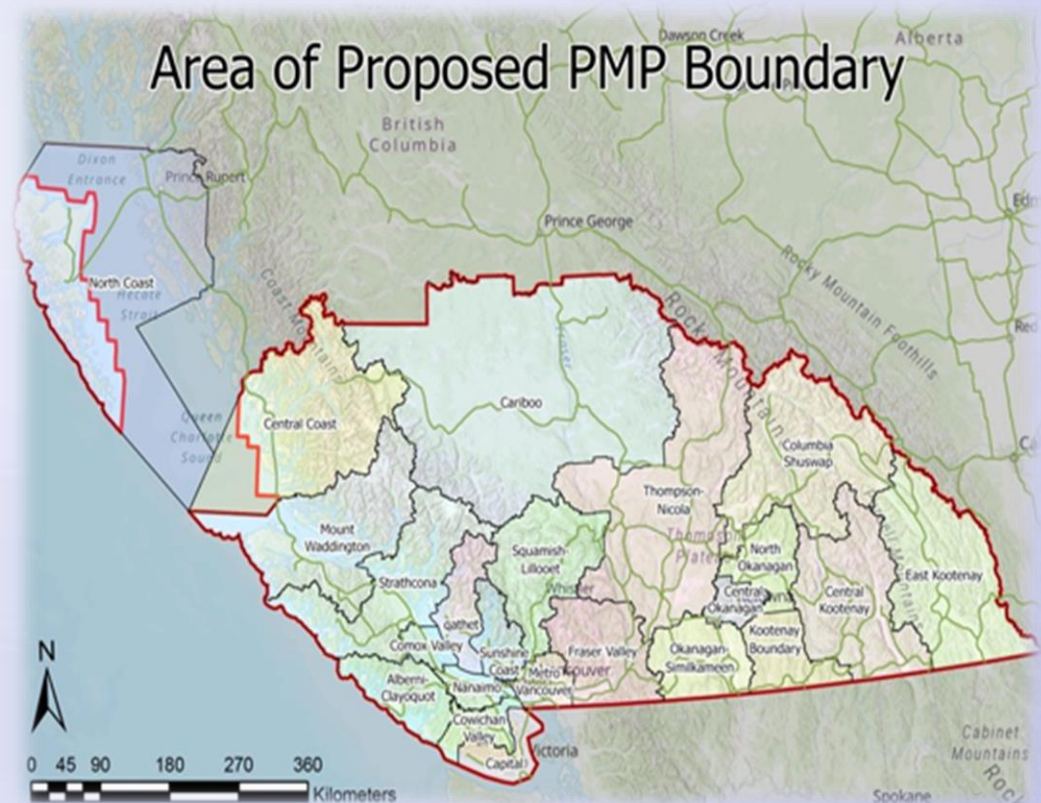


2023 PMP Replacement Project

NEW! Large PMP to cover Southern and Coastal BC

Replacing three existing PMPs:

- South Coastal
 - (expires Apr. 2024)
- Southern Interior
 - (expires Apr. 2024)
- South Coastal Mainland
 - (expires Spring 2026)



Why do we develop a Pest Management Plan (PMP)?

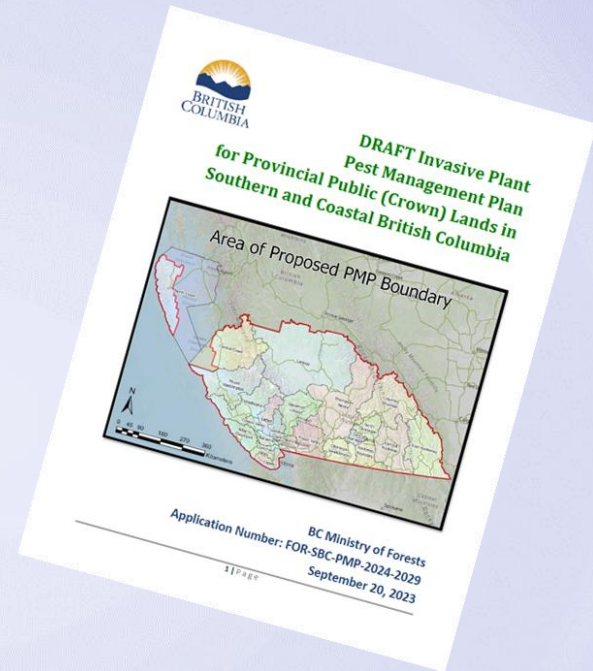
- 1) To ensure strategic and successful invasive plant management using integrated pest management principles
- 2) Legally required under the *BC Integrated Pest Management Act and Regulation*
- 3) Opportunity to invite engagement with Indigenous Communities that aren't already involved with the program and continue to build relationships with those that are.



Indigenous Consultation and Engagement within ACRD

Tseshaht First Nation
Hupacasath First Nation
Maa-nulth First Nations
Tla-o-qui-aht First Nation
Ahousaht First Nation
Hesquiaht First Nation
Ditidaht First Nation

- Snaw'Naw'As Nation (minor overlap)
- Mowachaht/Muchalaht First Nation (minor overlap)
- Wei Wai Kai Nation (minor overlap)
- Wei Wai Kum First Nation (minor overlap)
- Qualicum First Nation (minor overlap)
- K'omoks First Nation (minor overlap)



Integrated Pest Management supports effective invasive species management.

- Prevention
- Identification
- Inventory
- Establishing Priorities and Management Strategies
- Treatment Method Selection
- Monitoring and Evaluation

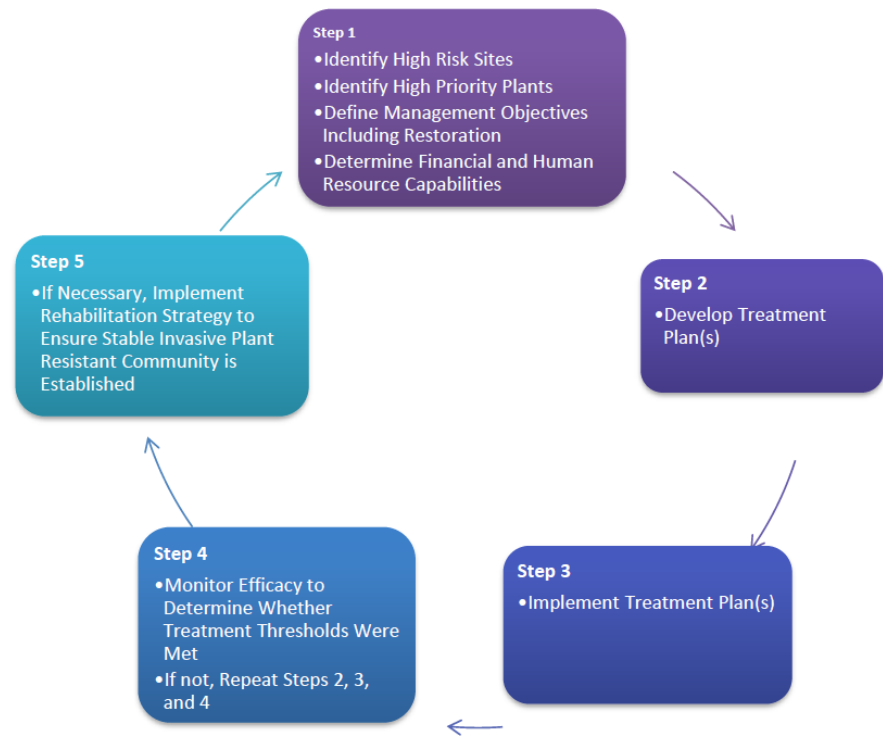


Figure 1 – IPM Steps for an Effective Invasive Plant Management Program

Prevention

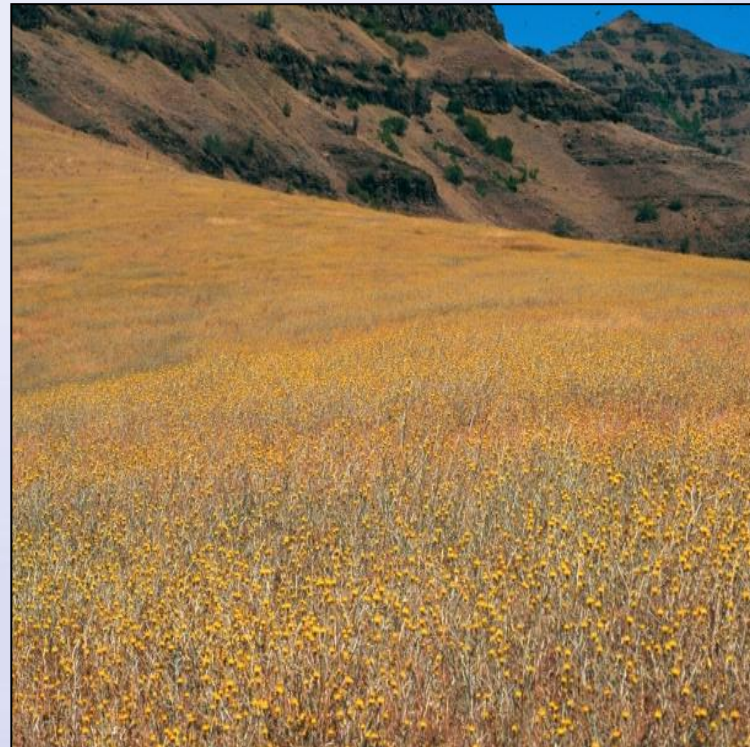
Preventing the initial introduction, establishment and spread of invasive plants is the single most effective method of invasive plant control!



Not yet known in BC



Yellow star thistle



Invasive Plant Treatment Options

OPTIONS FOR CONTROL:

- 1. Mechanical treatment***
- 2. Biological treatment***
- 3. Targeted spot application of herbicide treatment***



Treatment methods are determined based on:

- Characteristics of the species (eg. Rhizomes versus taproot)
- Site Conditions (eg. Soils, proximity to water)
- Size of infestation
- Available tools



What is NOT permitted under the PMP?

- **No** Aerial Application
- **No** Targeted Treatment of Native Plants (only high risk non-native invasive plants)
- **Only** herbicides, no insecticides or other pesticides

In all cases: Benefits of treatment method chosen must outweigh risk of allowing the invasive plant site to continue to spread.

2023 Treatments in ACRD

- All treatments under the PMP were on MOTI jurisdiction this year



Species Treated Chemically	Number of Sites
Bohemian Knotweed	3
Japanese Knotweed	10
Gorse	6
Japanese Butterbur	1
Yellow Iris	1

- Plus 3 mechanical treatments at 1 occurrence of Portuguese Broom (*Cytisus striatus*)
 - Provincial “Early Detection and Rapid Response” (EDRR)

Thank you!
Questions? Discussion?

More information:

<https://www2.gov.bc.ca/gov/content/environment/plants-animals-ecosystems/invasive-species>

***InvasivesBC Provincial Invasive Species
Database Application:***

[InvasivesBC.gov.bc.ca](https://www2.gov.bc.ca/gov/content/environment/plants-animals-ecosystems/invasive-species)

