

A scenic landscape featuring a blue sky with wispy white clouds. In the foreground, there is a body of water reflecting the sky, and a dark, forested shoreline is visible on the right. The text is overlaid on the lower right portion of the image.

Bamfield
Active Transportation Network
Planning Project

Project Goals

“Develop a plan to promote active transportation & increase community interconnections”

1) Promote Active Transportation

- Increase support for Self-propelled watercraft (Kayak, Canoe, etc.)
- Expand pedestrian routes

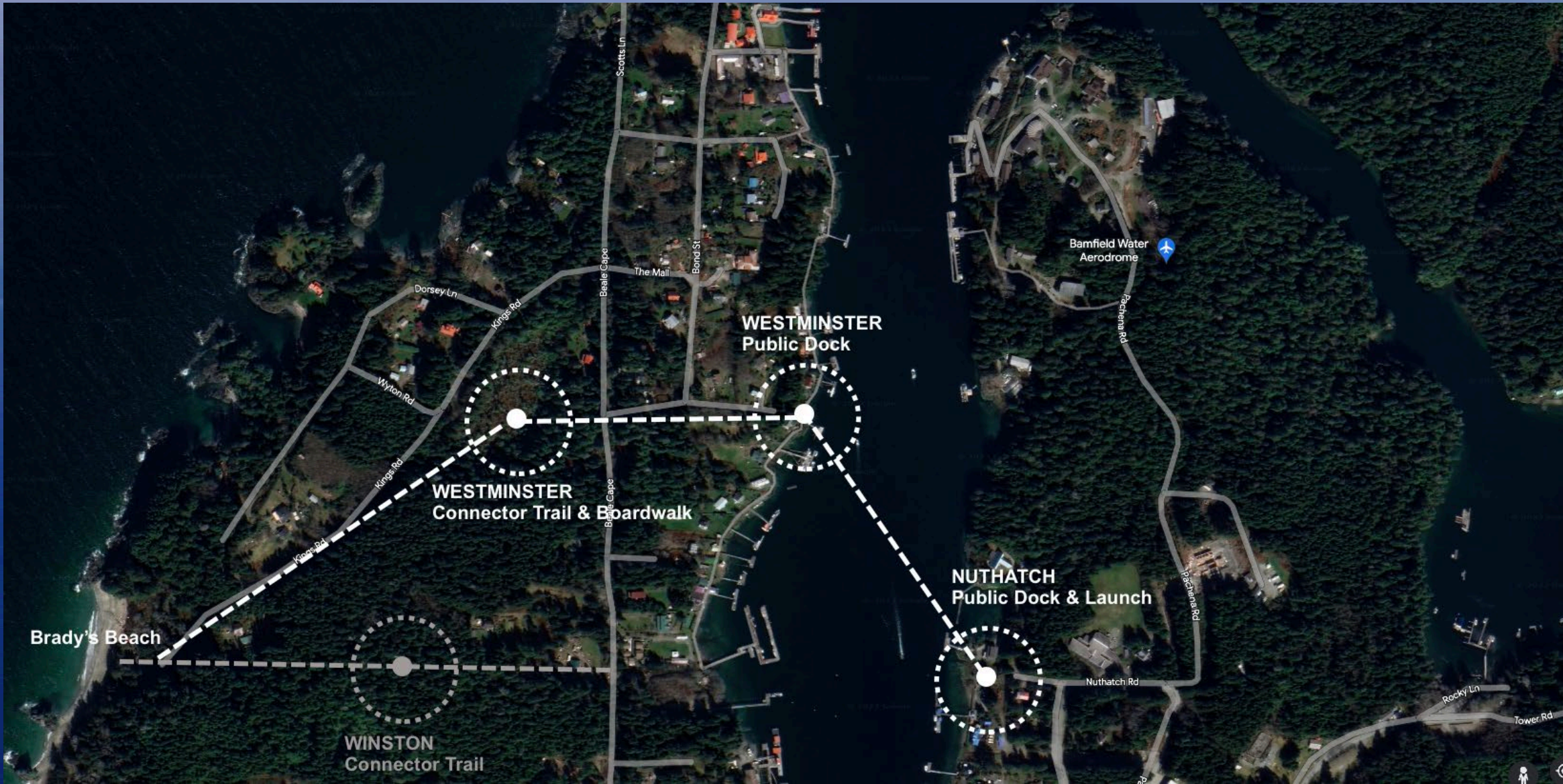
2) Community Interconnections

- Expand Connects between East & West Bamfield
- Connect West Bamfield (across Mills Peninsula)

Community Engagement

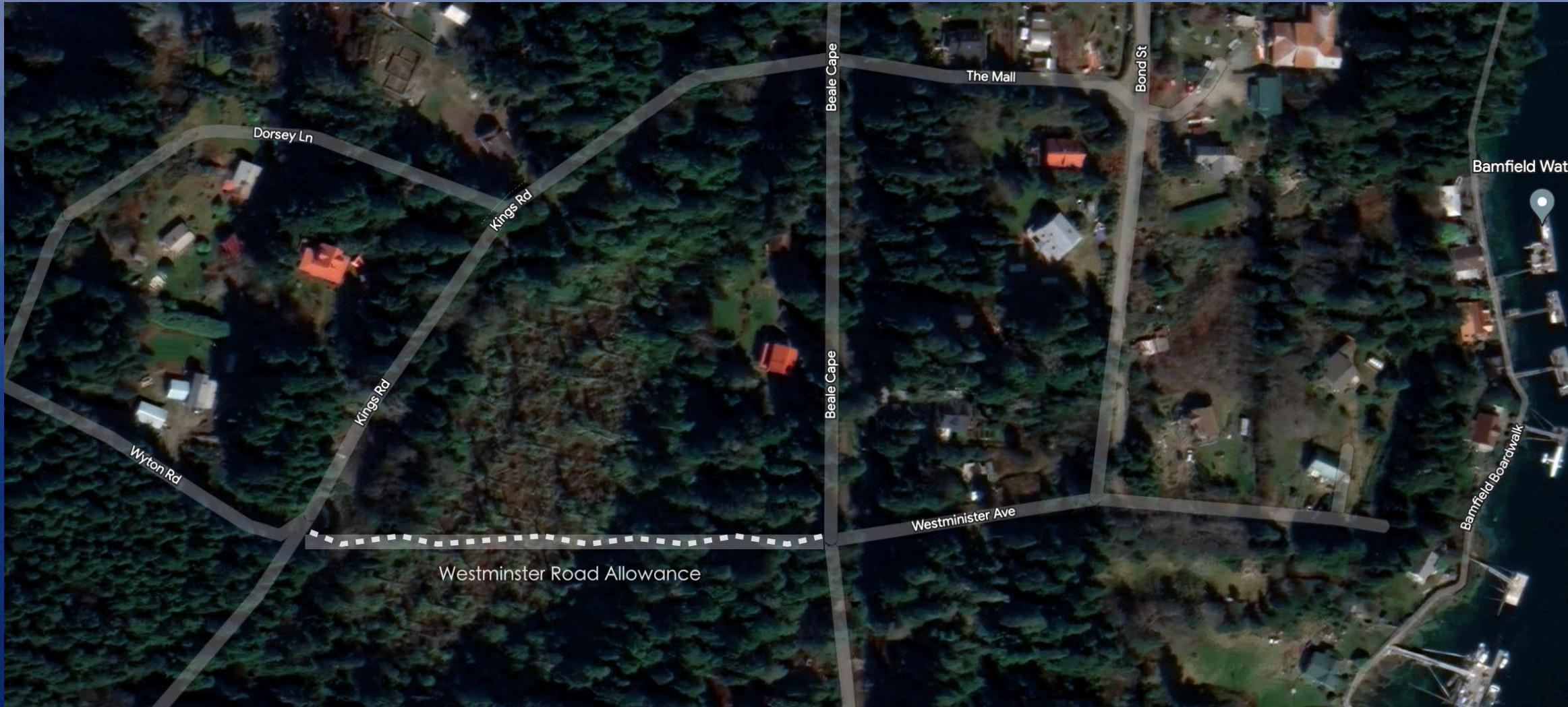
- Online Survey
 - Average of 85% support for the proposed project sites
- Community Presentations
 - 2 Public presentations for proposed sites / infrastructure development
- Public Onsite w/ UBC Architecture Team
 - Onsite engagement at 3 proposed sites
- Design Presentations
 - 2 design reviews by architecture team

Overview of Proposed Project Sites



Westminster Bog Trail

- 400m mixed boardwalk & forest trail, connects Cape Beal Trail & Kings rds.
- Reduces walk to Brady's Beach by 500m
- Improves interconnections within community
- Ecological attraction



Westminster Bog Boardwalk Design

- Draft boardwalk design
- UBC School of Architecture / Landscape Architecture



Shorepine Bog Trail – Long Beach

Sample West Coast Bog Boardwalk



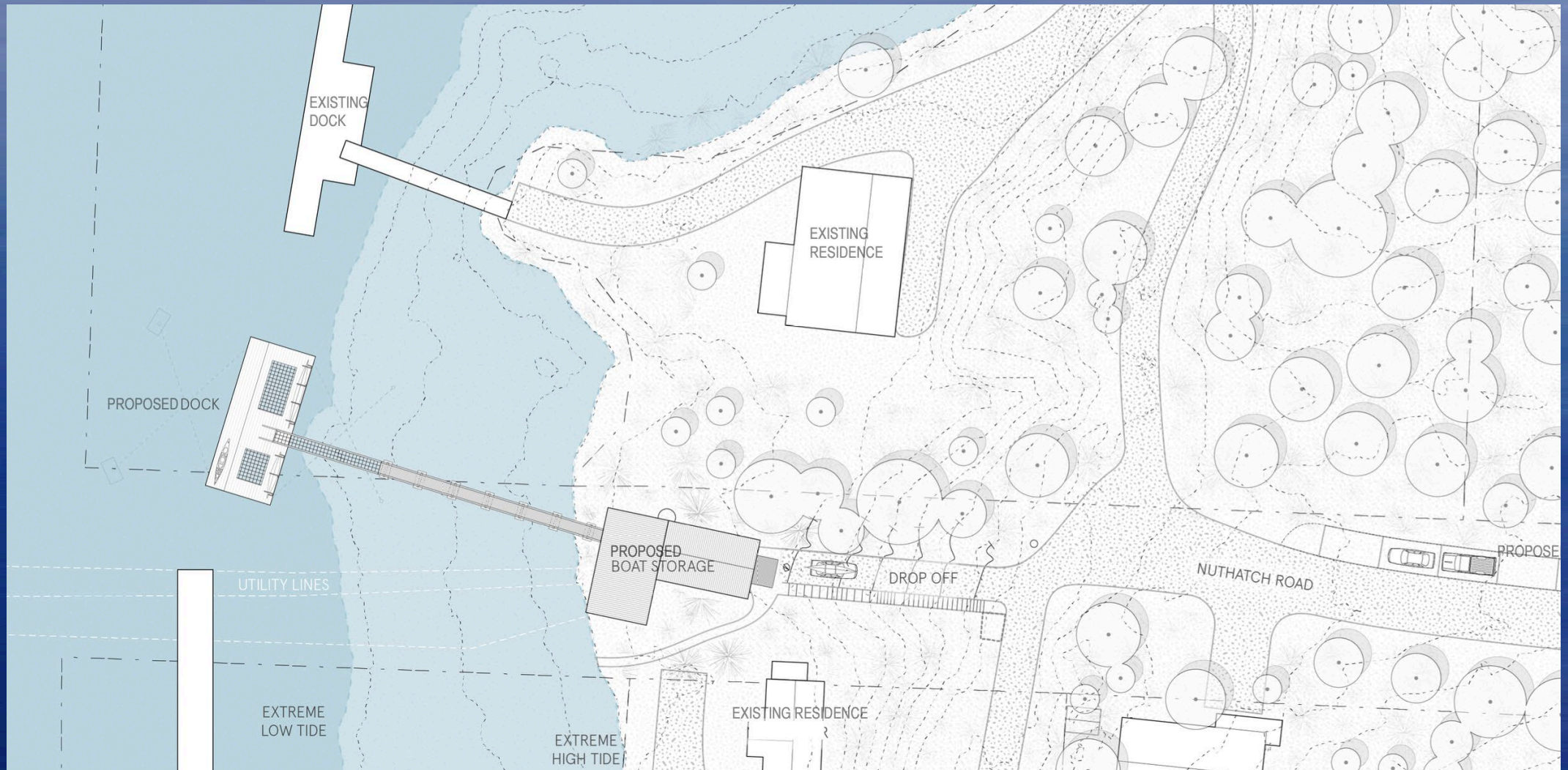
Nuthatch Kayak/Canoe Dock

- Community Dock at Nuthatch Waterfront
- Re-Establish Public Dock
- Supports Commuting East/West Bamfield
- Improves interconnections within community



Nuthatch Community Dock

- Community Dock at Nuthatch Waterfront
- Kayak/Canoe Launch w/ Vehicle Access
- Connects to School, Community Hall, Firehall
- Kayak / Canoe Racks



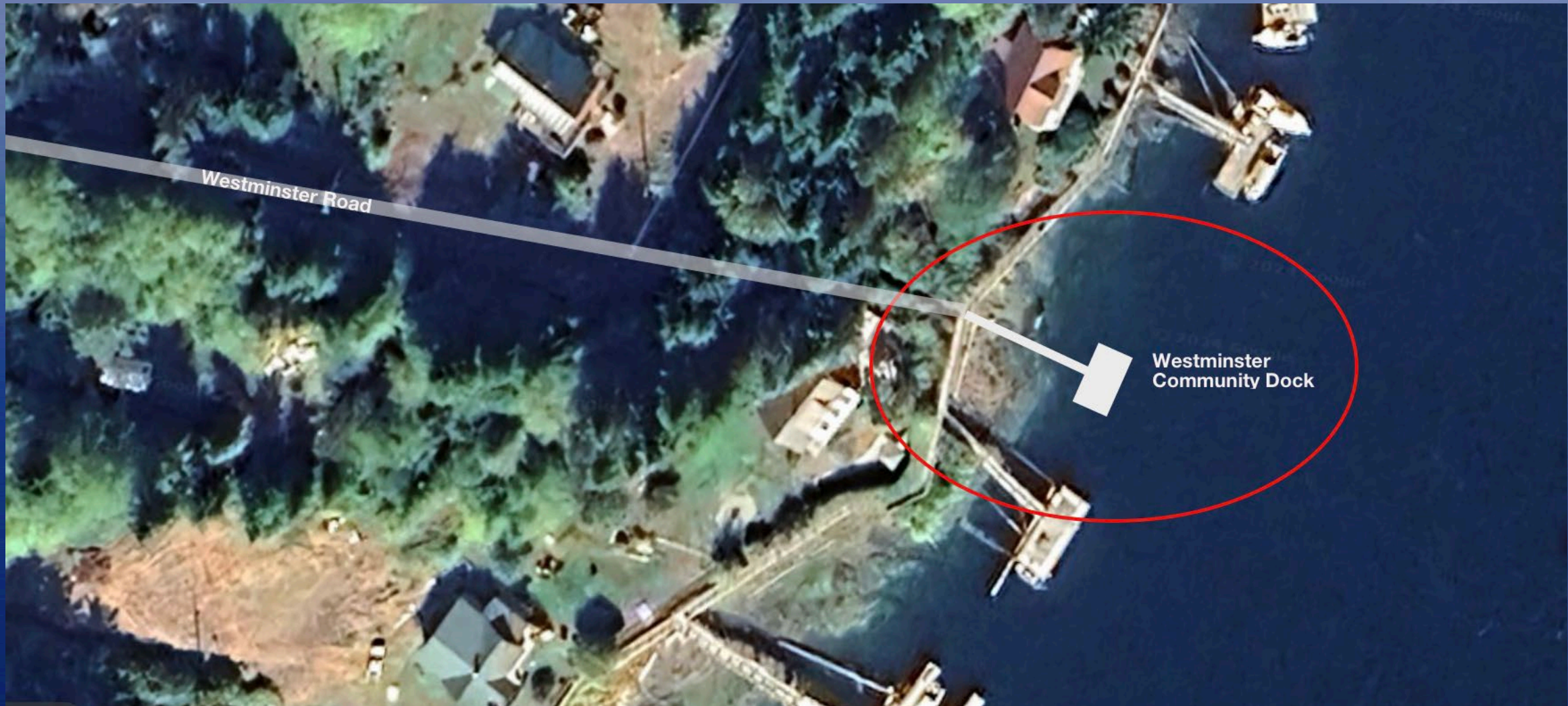
Nuthatch Dock

- UBC Design Rendering



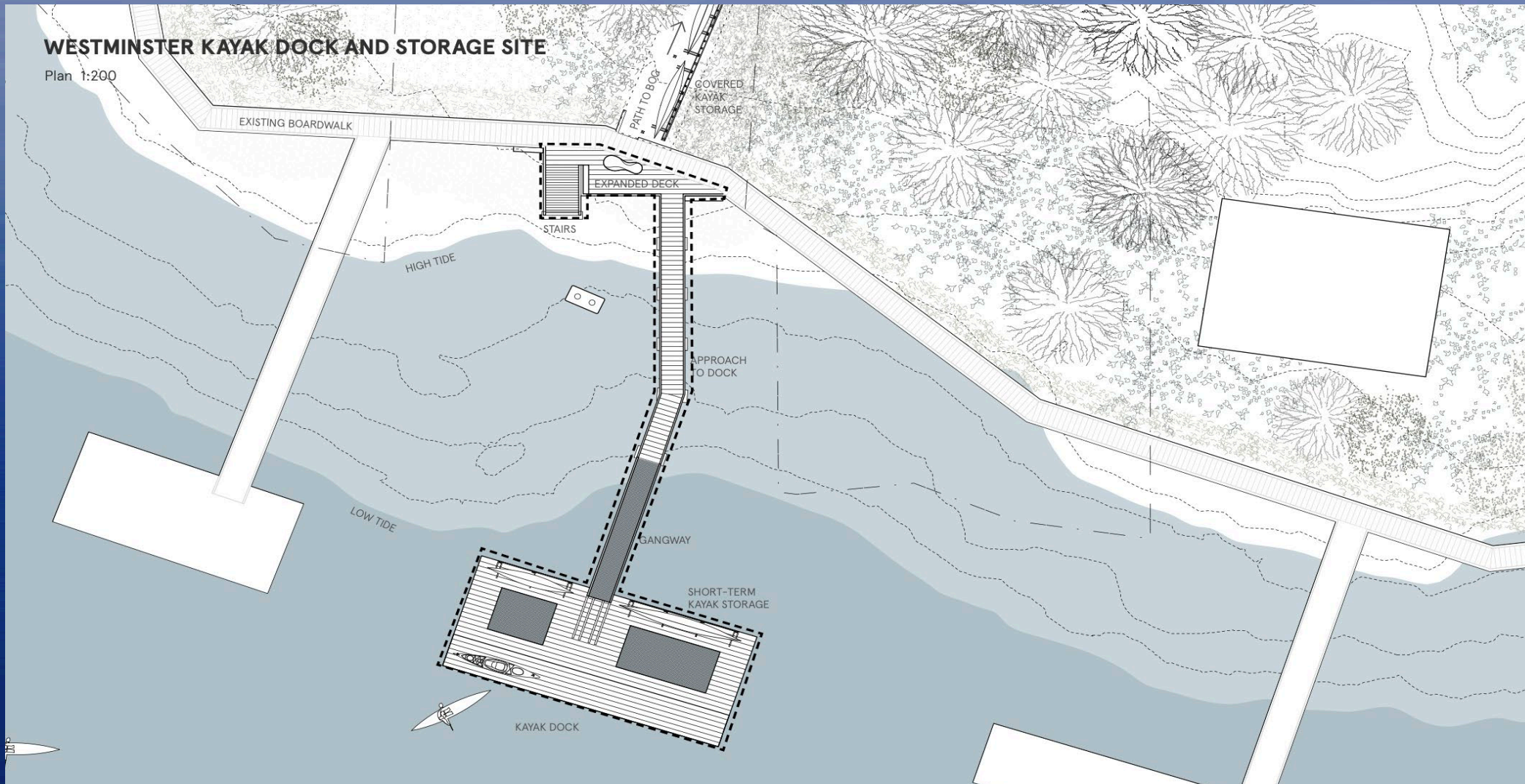
Westminster Kayak/Canoe Dock

- Connects to Bamfield Boardwalk
- Transfer to Westminster Rd., Bog Trail
- New Piers, Approach, Dock



Westminster Community Dock

- Community Dock at Westminster Waterfront
- Connects to Boardwalk, Westminster Rd.
- Supports Commuting East/West Bamfield
- Kayak / Canoe Racks



Westminster Dock

- UBC Design Rendering



Next Steps

Phase 2

- Bamfield Services Committee
 - Review/assess merits of project
 - Prioritize project sites
 - Recommendation to ACRD Board
- ACRD Board
 - Review/assess, consider project's inclusion within ACRD Services
 - Initiate Workplan, Budget

Phase 3

- Workplan & Budget
 - Finalize design of selected project sites
 - Determine project costs
 - Develop implementation plan
 - Submit request(s) for "License of Occupation"
 - Submit request for water lease(s)
 - Submit project funding applications

Bamfield OCP

Policy 16.2.3

Support the expansion of a park system on the Crown-owned lands on Mills Peninsula.

Policy 16.2.4

Investigate community interest in obtaining new parkspaces/trails in the following areas, and implement actions to obtain these lands if they are of interest to citizens in the Plan area:

- a) Lot A Plan 38380, South Bamfield Road
- b) Westminster Avenue right-of-way between Lots 31 and 32, Plan 942 in West Bamfield to be developed as a raised boardwalk.
- c) Right-of-way Plan 38971 (Bamfield Road entrance into the community) to be developed as a pedestrian trail.