


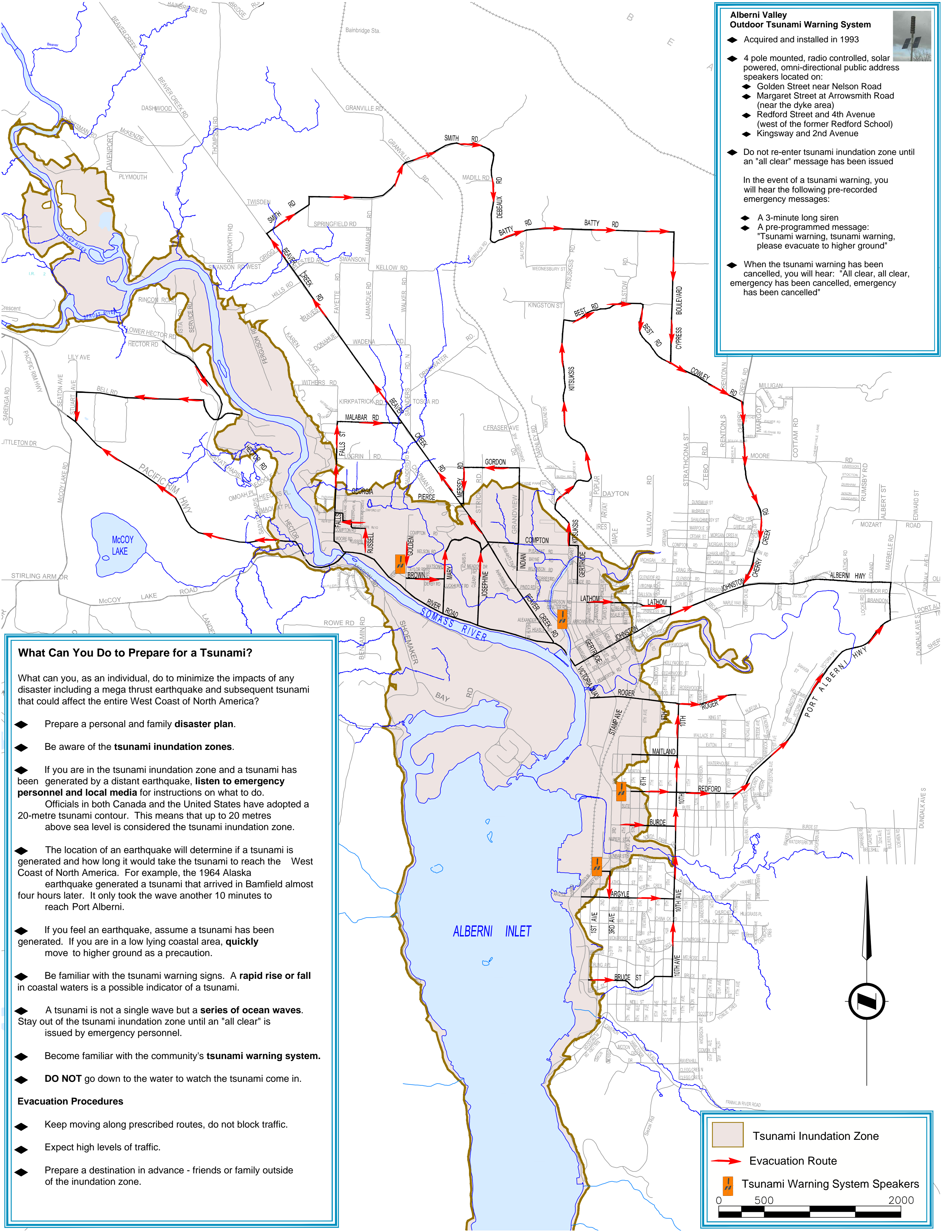
Alberni Valley Outdoor Tsunami Warning System



- ◆ Acquired and installed in 1993
- ◆ 4 pole mounted, radio controlled, solar powered, omni-directional public address speakers located on:
 - ◆ Golden Street near Nelson Road
 - ◆ Margaret Street at Arrowsmith Road (near the dyke area)
 - ◆ Redford Street and 4th Avenue (west of the former Redford School)
 - ◆ Kingsway and 2nd Avenue
- ◆ Do not re-enter tsunami inundation zone until an "all clear" message has been issued

In the event of a tsunami warning, you will hear the following pre-recorded emergency messages:

- ◆ A 3-minute long siren
- ◆ A pre-programmed message: "Tsunami warning, tsunami warning, please evacuate to higher ground"
- ◆ When the tsunami warning has been cancelled, you will hear: "All clear, all clear, emergency has been cancelled, emergency has been cancelled"



What Can You Do to Prepare for a Tsunami?

What can you, as an individual, do to minimize the impacts of any disaster including a mega thrust earthquake and subsequent tsunami that could affect the entire West Coast of North America?

- ◆ Prepare a personal and family **disaster plan**.
- ◆ Be aware of the **tsunami inundation zones**.
- ◆ If you are in the tsunami inundation zone and a tsunami has been generated by a distant earthquake, **listen to emergency personnel and local media** for instructions on what to do. Officials in both Canada and the United States have adopted a 20-metre tsunami contour. This means that up to 20 metres above sea level is considered the tsunami inundation zone.
- ◆ The location of an earthquake will determine if a tsunami is generated and how long it would take the tsunami to reach the West Coast of North America. For example, the 1964 Alaska earthquake generated a tsunami that arrived in Bamfield almost four hours later. It only took the wave another 10 minutes to reach Port Alberni.
- ◆ If you feel an earthquake, assume a tsunami has been generated. If you are in a low lying coastal area, **quickly** move to higher ground as a precaution.
- ◆ Be familiar with the tsunami warning signs. A **rapid rise or fall** in coastal waters is a possible indicator of a tsunami.
- ◆ A tsunami is not a single wave but a **series of ocean waves**. Stay out of the tsunami inundation zone until an "all clear" is issued by emergency personnel.
- ◆ Become familiar with the community's **tsunami warning system**.
- ◆ **DO NOT** go down to the water to watch the tsunami come in.

Evacuation Procedures

- ◆ Keep moving along prescribed routes, do not block traffic.
- ◆ Expect high levels of traffic.
- ◆ Prepare a destination in advance - friends or family outside of the inundation zone.

0 500 2000

