



Alberni Clayoquot Regional District Financial Plan

*Bamfield Community Affairs
February 16th, 2015*

Presentation Outline

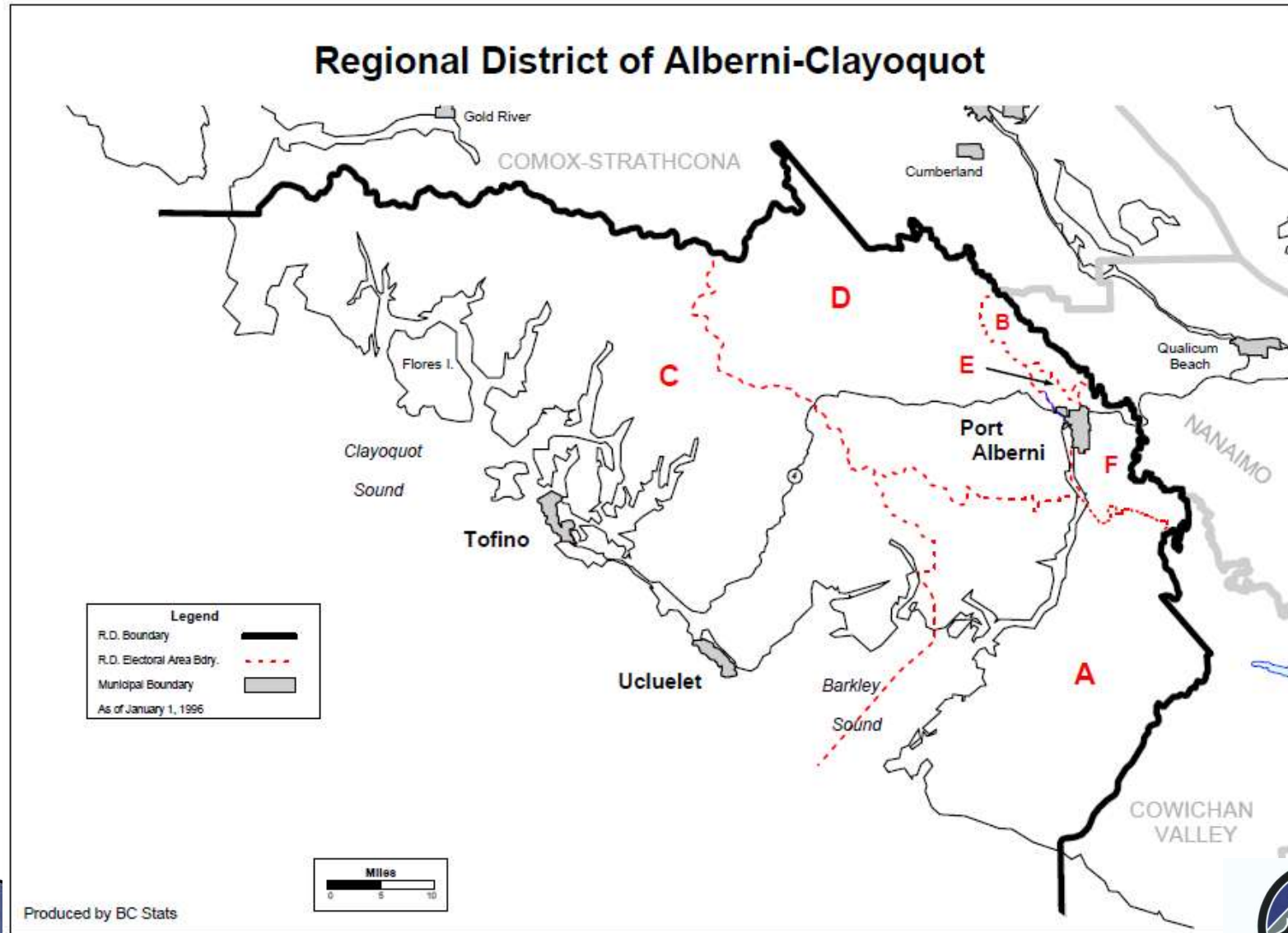
- ▶ Overview of what the regional district is, including Financial rules
- ▶ Vision and priorities of the Board of Directors
- ▶ Services relevant to Electoral Area 'A' – Bamfield
- ▶ 2015 – 2019 Financial Plan Highlights

Purpose of Regional District's

1. **Services to the rural areas** (fire department or water system)
2. **Shared services** among rural areas, First Nations and the municipalities of Port Alberni (solid waste and planning).
3. **Share services** with other regional districts (North Island 911)
4. **Lobby for Regional Interests** – Political

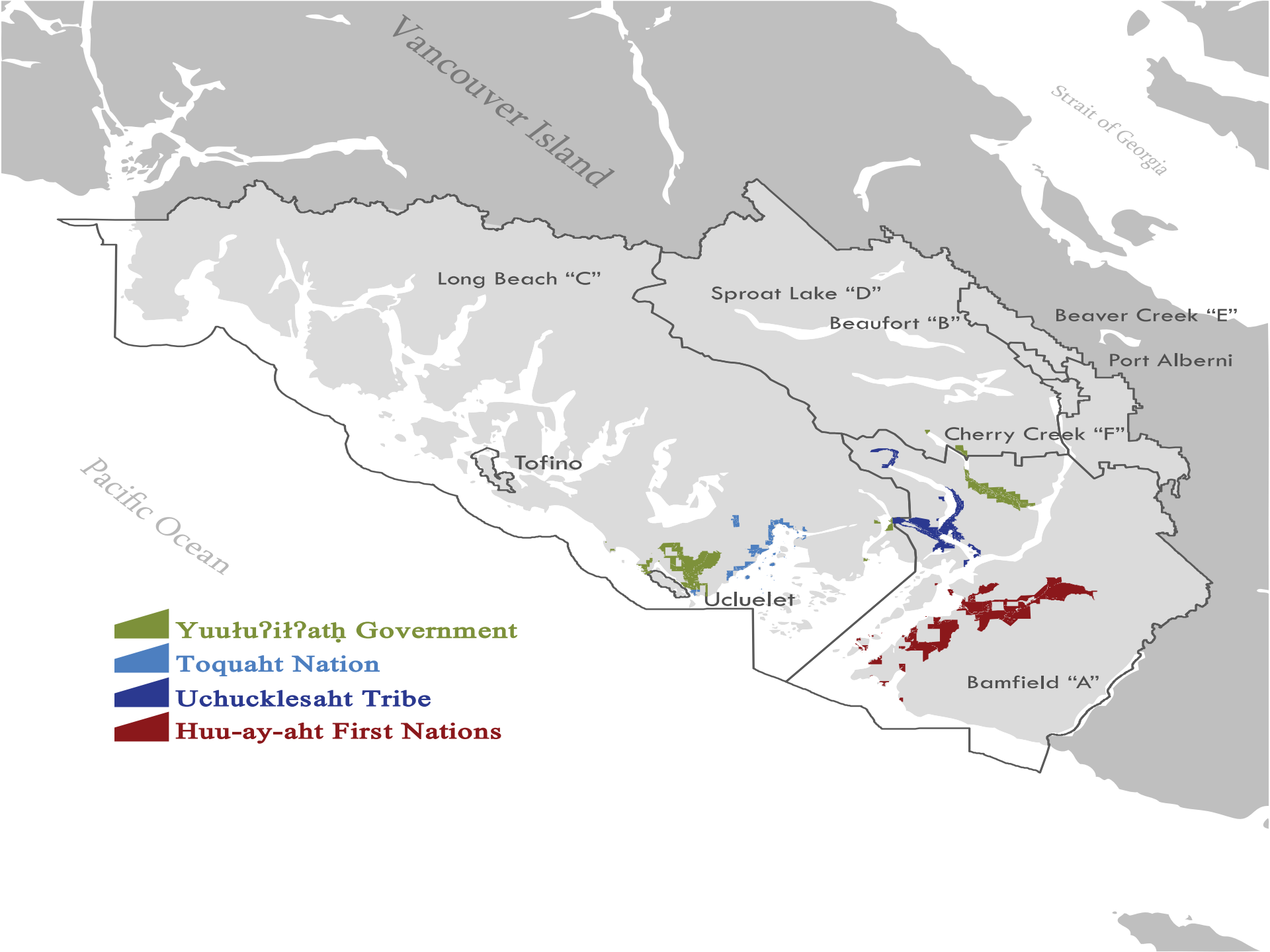


Map of Regional District



Produced by BC Stats





Vancouver Island

Strait of Georgia

Long Beach "C"

Sproat Lake "D"

Beaufort "B"

Beaver Creek "E"

Port Alberni





Cherry Creek "F"

Tofino

Ucluelet

Bamfield "A"

Pacific Ocean

-  Yuułuʔiłʔatḥ Government
-  Toquaht Nation
-  Uchucklesaht Tribe
-  Huu-ay-aht First Nations

Vision of the Board of Directors

The Alberni-Clayoquot Regional District is an umbrella organization through which independent communities can work together for the benefit of the whole, by: sharing resources and ideas; proactively providing affordable, responsive services; and contributing towards a vibrant community through sustainable, controlled growth.

6 Priorities for Board of Directors

- **Reconciliation** – an initiative of the Directors to adopt practices and take meaningful actions of respect to help break the cycle of hurt and suffering.
- **Rural water** systems and regional water – address aging infrastructure and realize water quality requirements – complete capital works, manage revenues, increase knowledge
- Update the **zoning bylaw**
- Evaluate future of **health network**, pursue improved local representation on Island Health
- **Improved transportation** through management of infrastructure (airports), coordination of service providers – health network and lobbying for highway upgrades.
- Improve **Application processes** – improve clarity, effectiveness and communication of application processes.

Service Financial Rules

- Areas are only charged for the services they are provided
- Services are independent – you cannot transfer revenues and expenditures between services
- The entire Board is responsible for each service



Budget Highlights / Issues

- ▶ Regional Parks and Trails Masterplan
 - Including consideration of a trail between Bamfield and Anacla
- ▶ Solid Waste Management Plan review
- ▶ Bamfield transfer station review to consider if partnering with HFN and Marine Station would lower costs and improve service levels
- ▶ Recycling Changes – MMBC
- ▶ Bamfield Water System
 - Upgrades using Gas Tax Funding
 - Water treatment system pilot project
- ▶ Updating the rezoning bylaw

ACRD Services



- Administration
- Fire Protection
- 911 Telephone Service
- Emergency Programs
- Solid Waste Management
- AV Airport
- Long Beach Airport
- Water Systems
- Rural Planning
- Regional Planning
- Building Inspection
- Library Services
- Regional Parks
- Community Parks
- Custom Transit
- Noise Control
- Street Lighting
- Grants in Aid

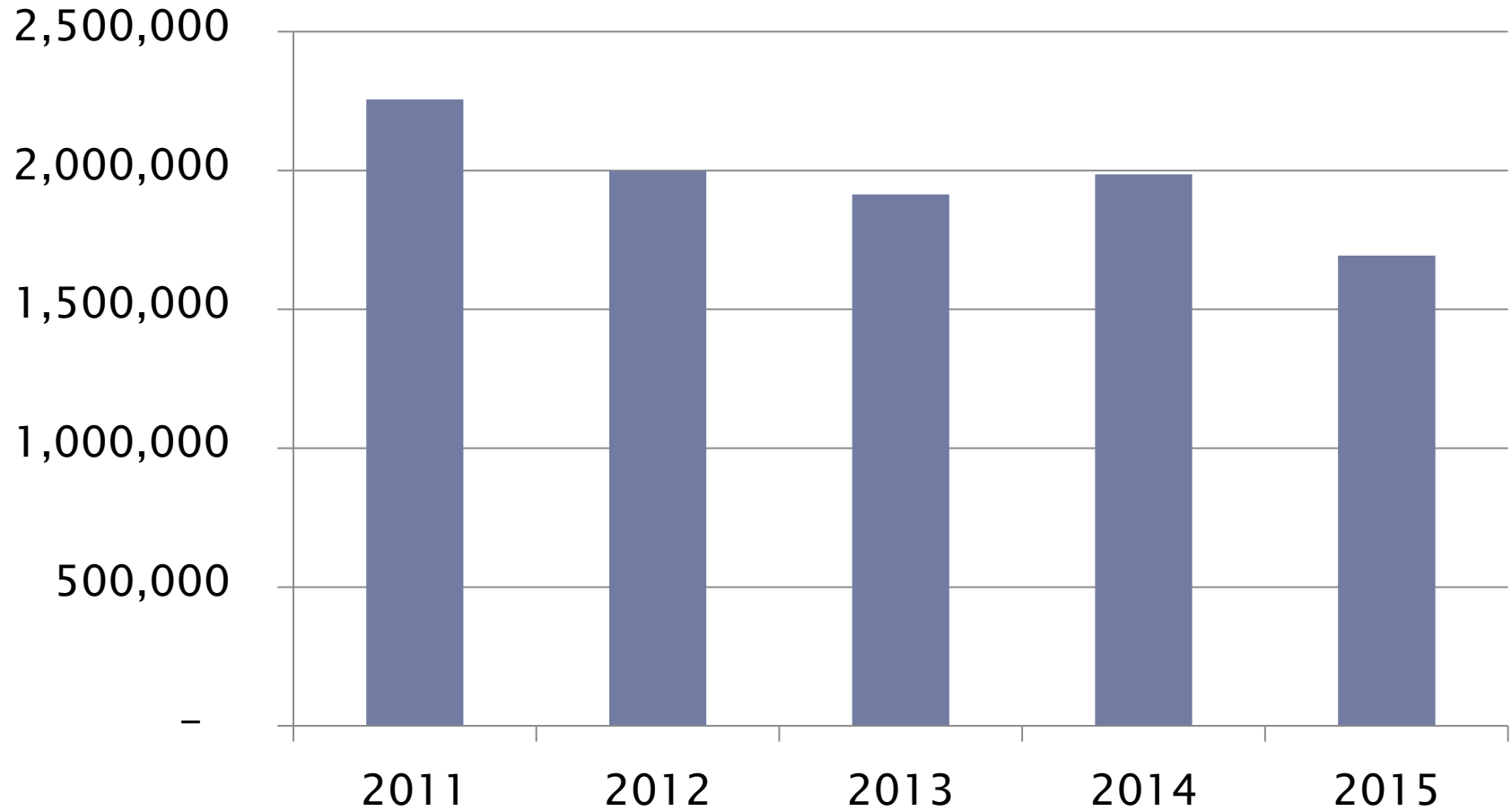


Regional Hospital District

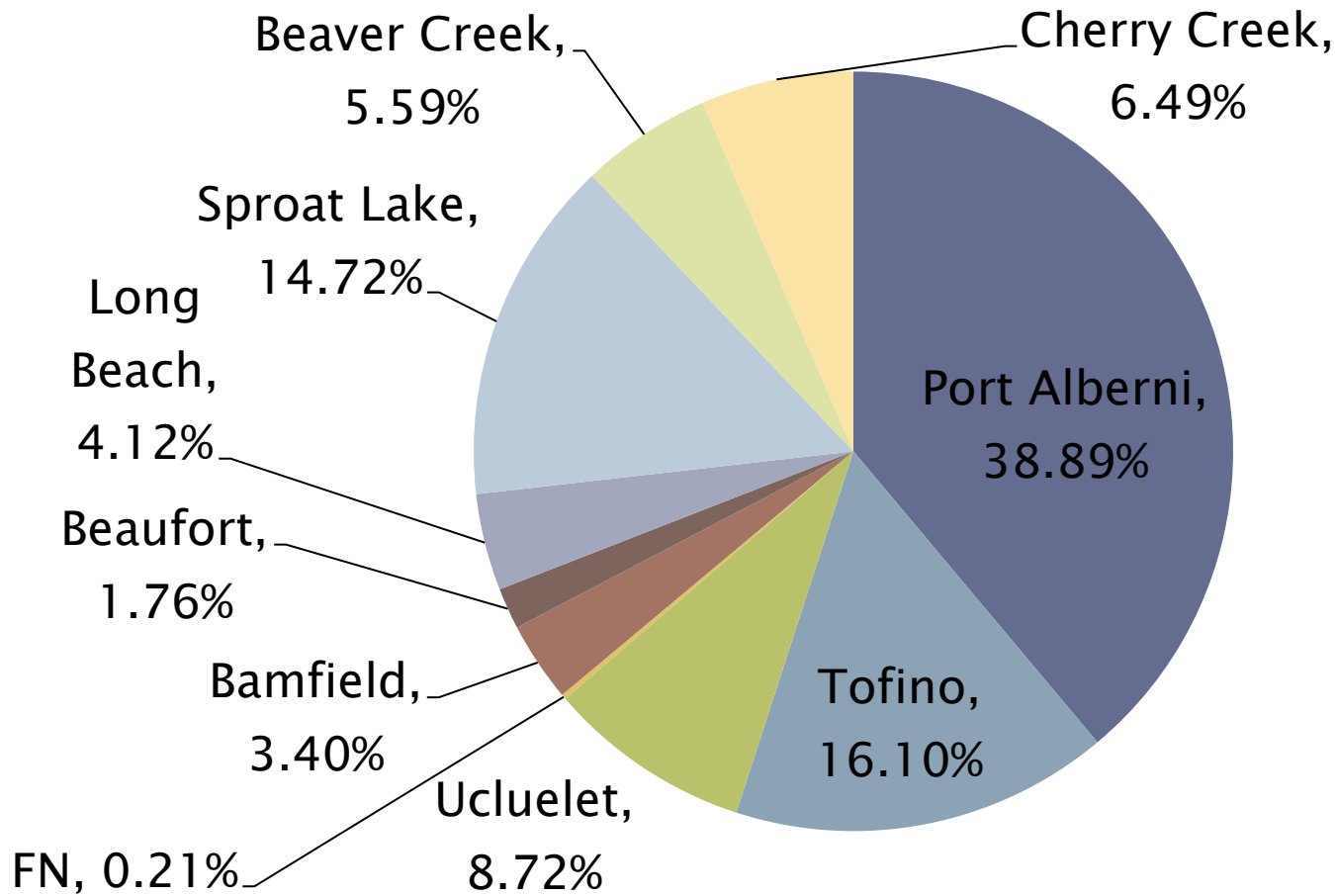
- ▶ The Regional District also serves as the Regional Hospital District for the area;
- ▶ Purpose of the Hospital District is to raise capital funds for the hospital facilities within the Region;
- ▶ West Coast General Hospital, Tofino General Hospital, Bamfield Health Centre.



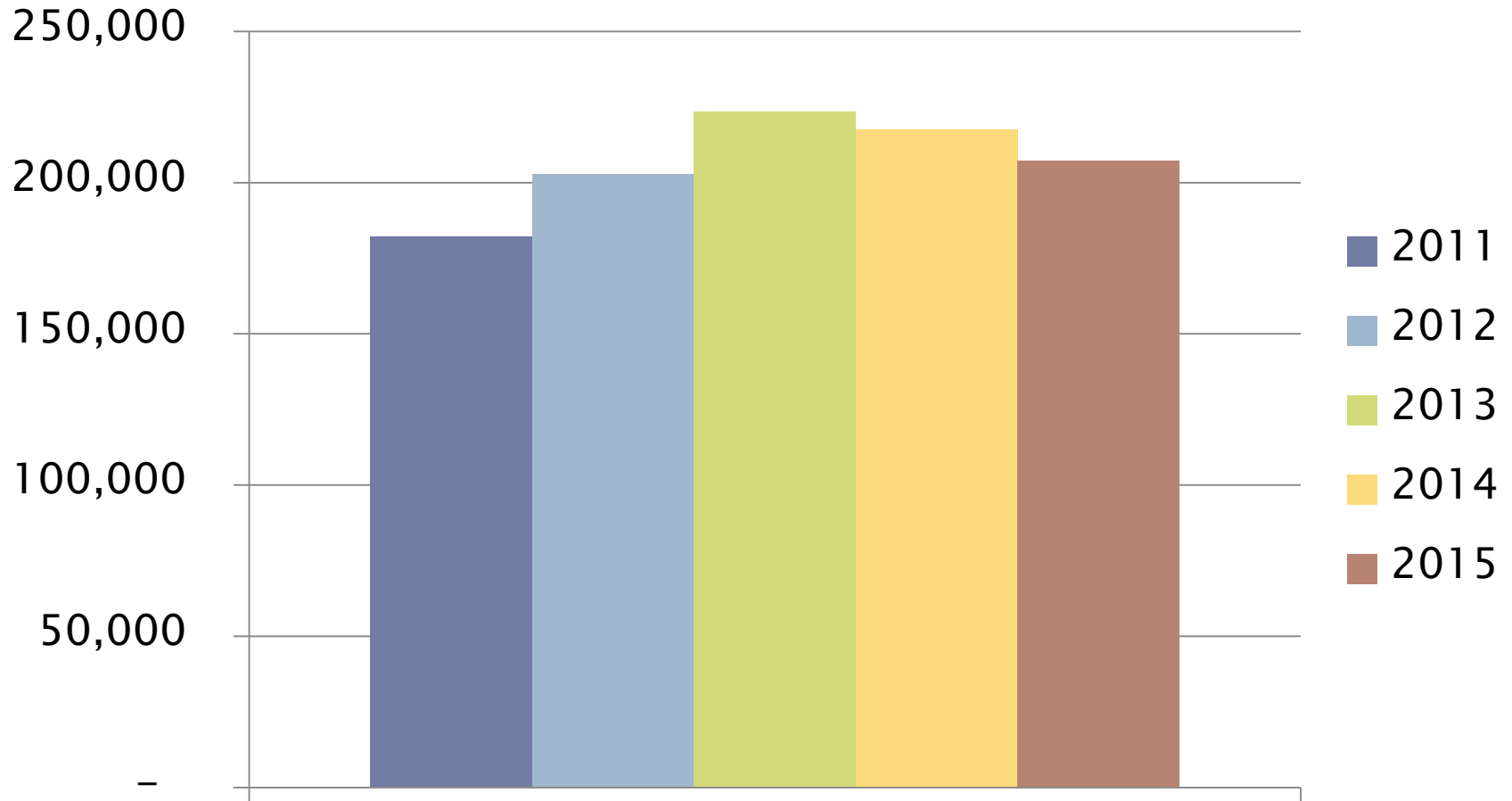
ACRHD Requisition



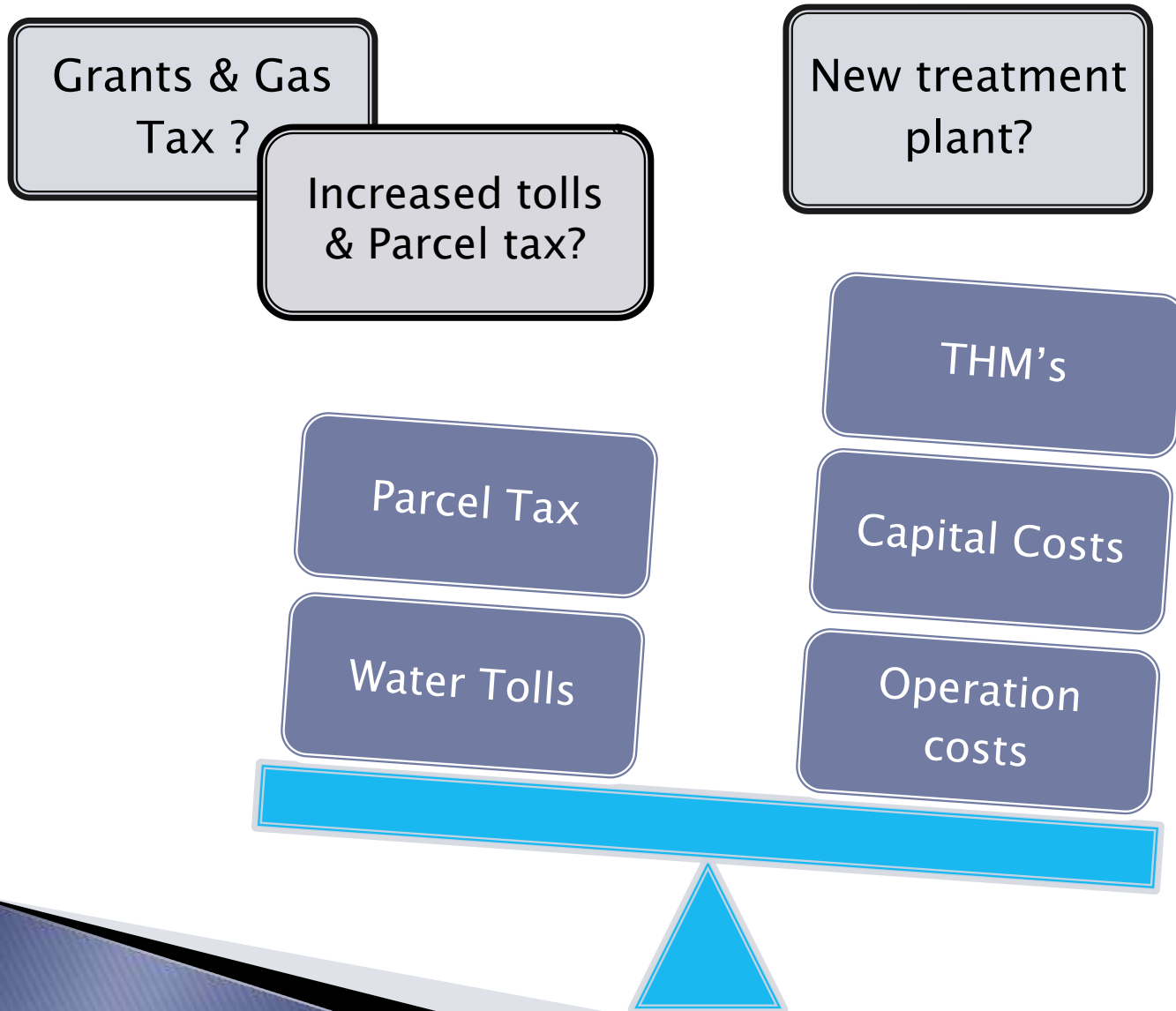
2015 Region Wide Apportionment



ACRD Requisition for Bamfield



Bamfield Water – challenges moving forward



Bamfield shared ACRD services

Service	2015 Rate (estimate)	2015 Regional District Portion of Property Tax Estimate Based on \$200,000 Assessed Value
North Island 911	0.050	\$10.00
General Government	0.160	\$32.00
Regional Parks	0.004	\$0.80
Regional Planning	0.022	\$4.40
Building Inspection	0.069	\$13.80
Electoral Area Admin	0.024	\$4.80
Rural Planning	0.128	\$25.60
VI Regional Library	0.198	\$39.60



Based on the services provided to the average home in the area and includes applicable parcel taxes

Tax rates are per thousand of converted assessed values



Preliminary Tax Estimates Bamfield

Service	2015 Rate (estimate)	2015 Regional District Portion of Property Tax Estimate Based on \$200,000 Assessed Value
Alberni Valley Waste Management	0.301	\$60.20
Bamfield Fire	0.877	\$175.40
Bamfield Water - parcel tax	236.38	\$236.38
Bamfield Community Park	0.093	\$18.60
Total excluding Grant in Aids		\$621.78



Based on the services provided to the average home in the area and includes applicable parcel taxes

Tax rates are per thousand of converted assessed values





Thank you & Questions? >>