

Alberni-Clayoquot Regional District

SWMP Review & Implementation Process

Carey McIver

Carey McIver & Associates Ltd.

Solid Waste Plan Monitoring Advisory Committee – West Coast

November 6, 2014



Maura Walker & Associates
ENVIRONMENTAL CONSULTANTS

Meeting Agenda

1. Background

- * ACRD Solid Waste Management Plan
- * Existing System Performance & Effectiveness
- * Plan Implementation Schedule

2. Curbside Collection RFP Process

- * Impact of MMBC

3. ICI Disposal Bans

- * Work Plan, Schedule, Budget

4. Organics Diversion Strategy

- * Vancouver Island Update – Issues and Opportunities



ACRD SWMP Review & Implementation Process

Background



Maura Walker & Associates
ENVIRONMENTAL CONSULTANTS

2007 Solid Waste Management Plan

Plan Component	New Diversion	Status
Reduction & Reuse	1-2%	Complete
Residential Recycling	9%	Complete
ICI Recycling	15%	Incomplete
Organic Waste Diversion	5%	Incomplete
Residual Waste Management		Complete
Demolition/Construction/Land Clearing	8%	Incomplete
Promotion & Education		Complete
Bear Awareness		Complete
Illegal Dumping Prevention		Complete
Product Stewardship		Complete
First Nations Linkages		Complete
Total Estimated New Diversion	39%	

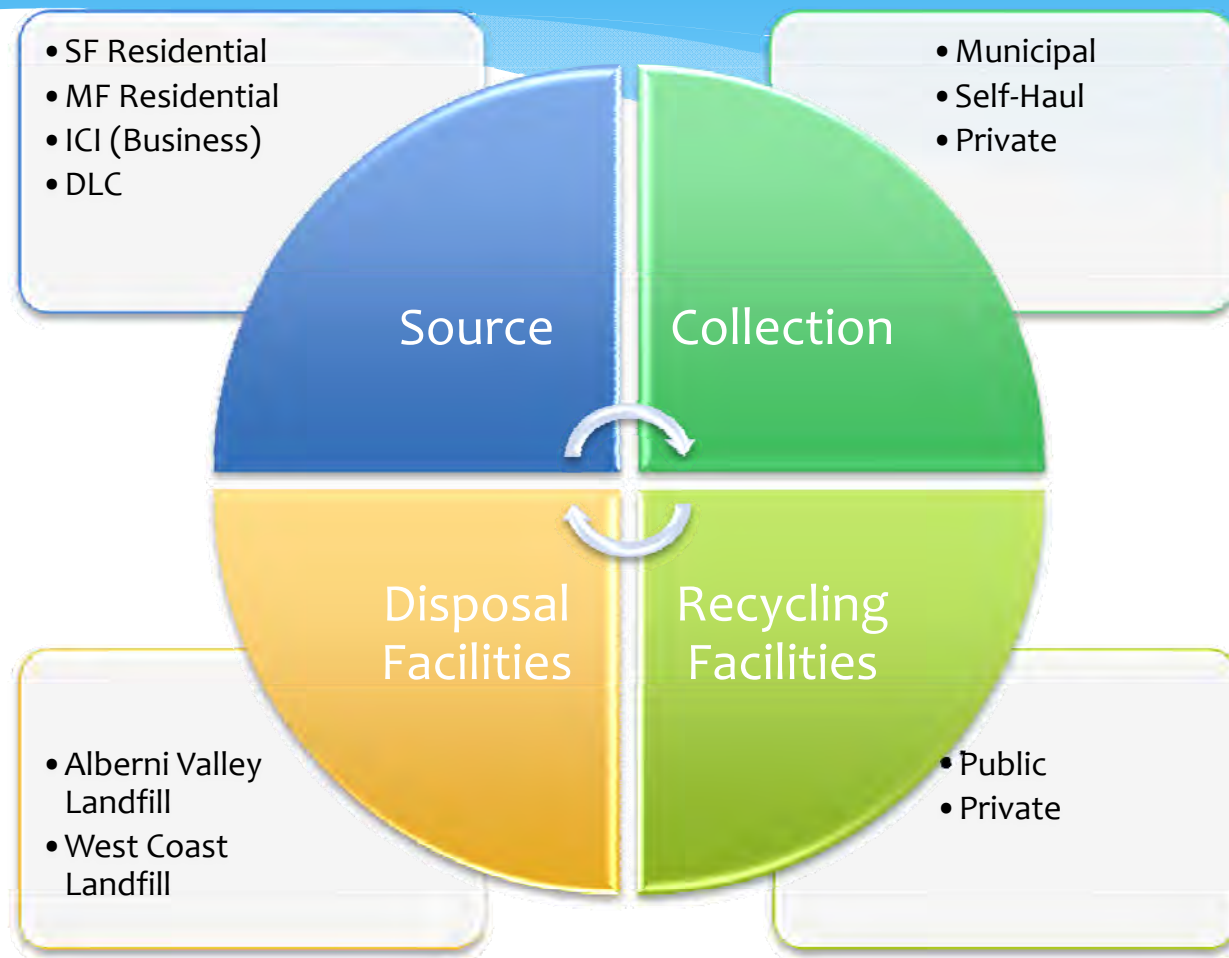


Diversion Potential

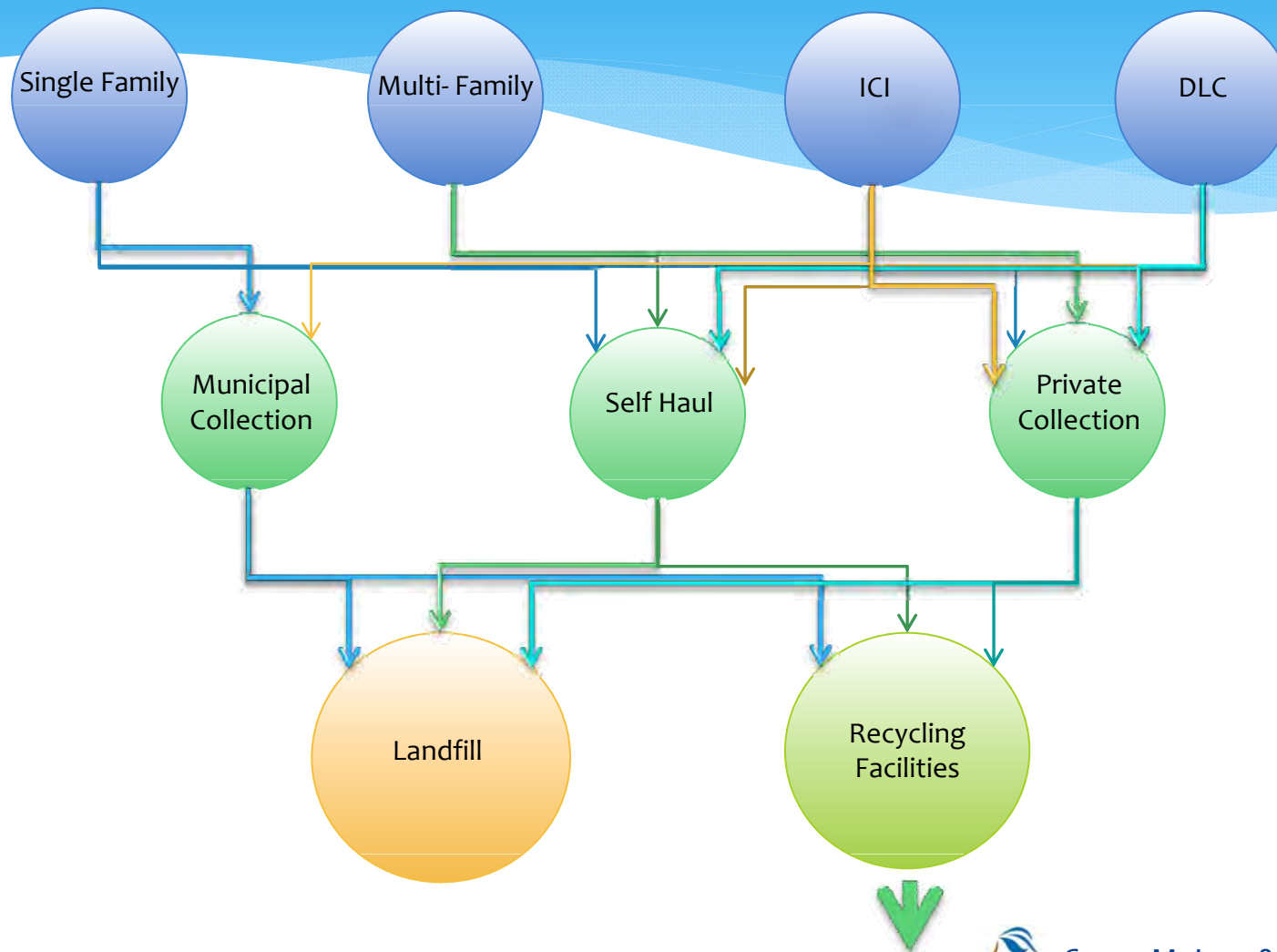
2007 Plan	2005	2012
Diversion Rate	15%	54%
Disposal Rate (kg per capita)	790	400



ACRD System Characteristics



Existing System



West Coast Landfill



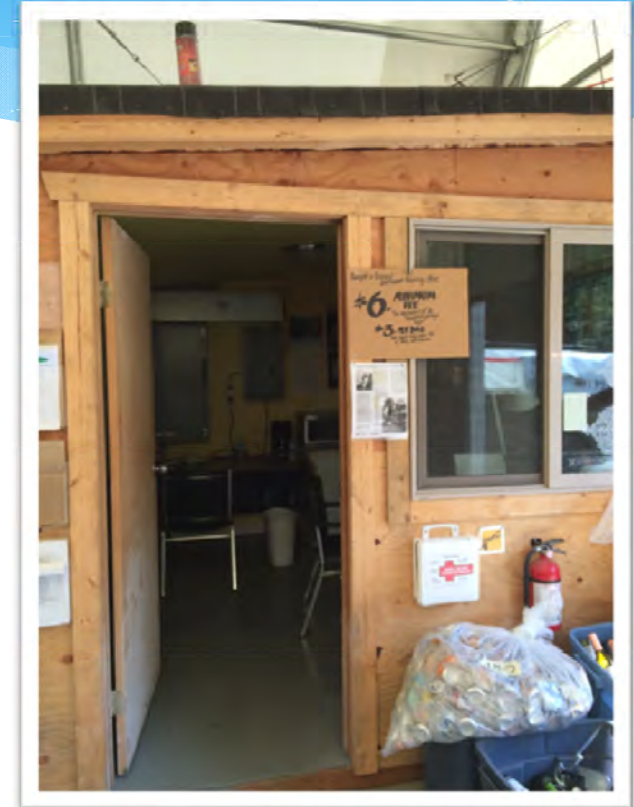
West Coast Landfill



West Coast Bin Area



Tofino Recycling Depot

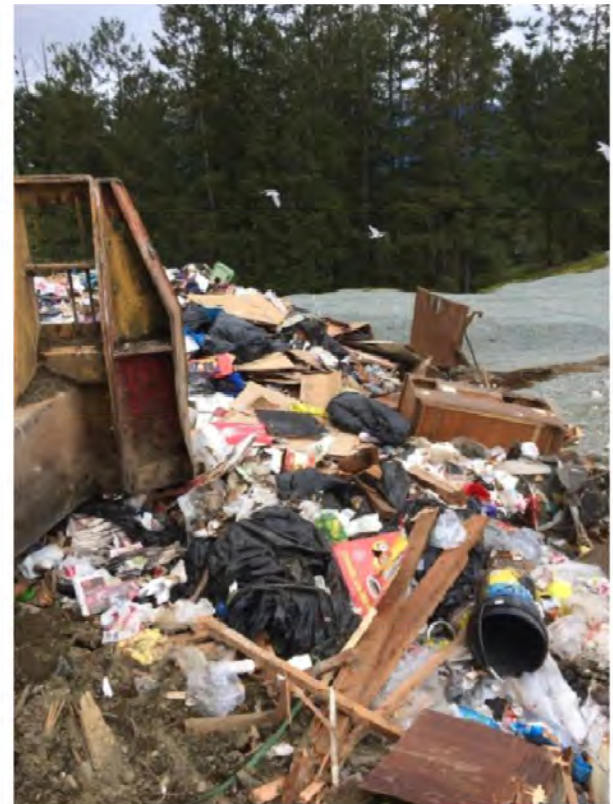


Carey McIver & Associates Ltd.

Tofino Recycling Depot



Alberni Valley Landfill



AV Landfill Recycling Depot



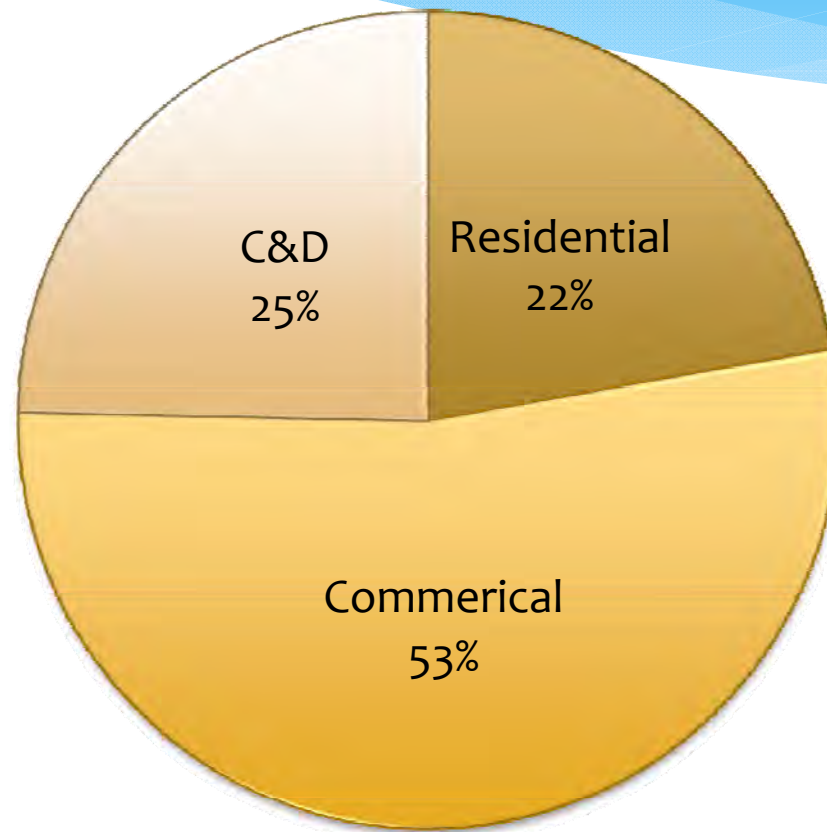
3Rd Avenue Recycling Depot



Bamfield Recycling Depot



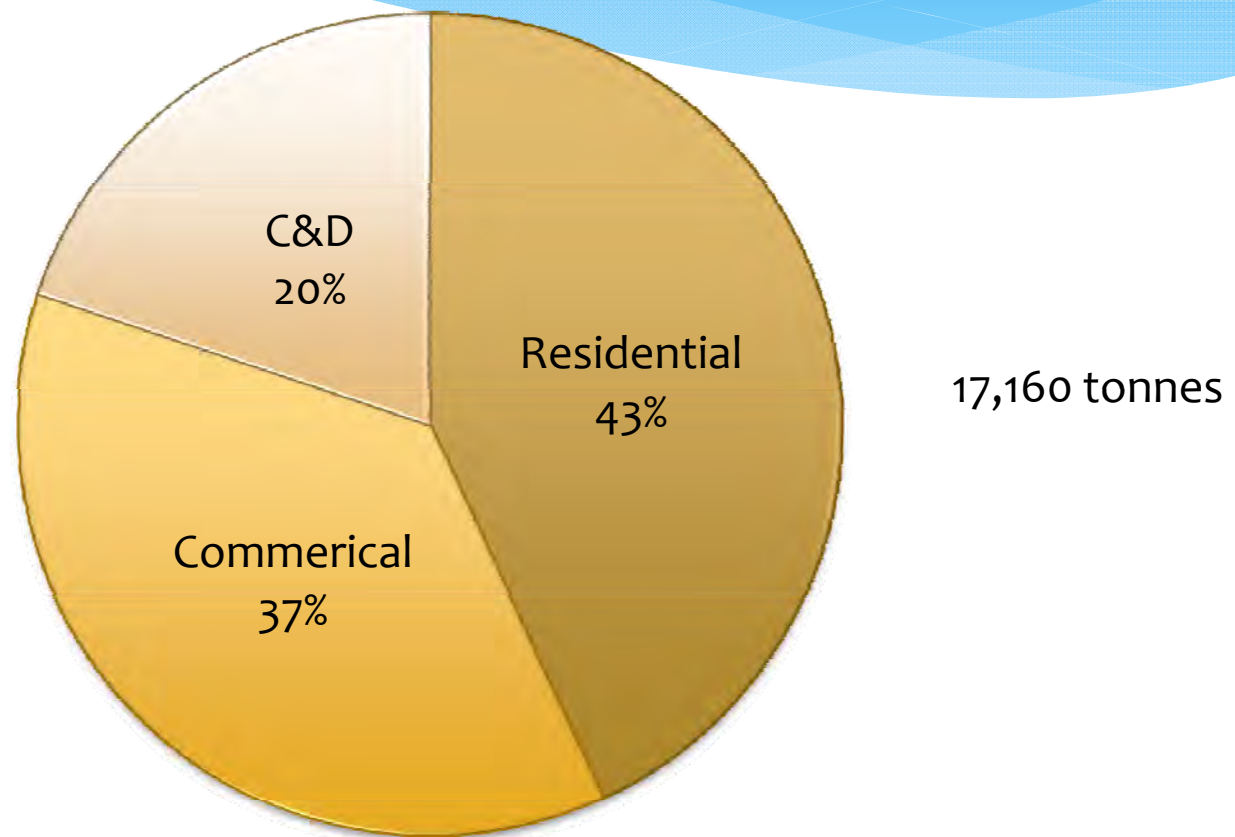
West Coast Waste Disposal



5,565 tonnes

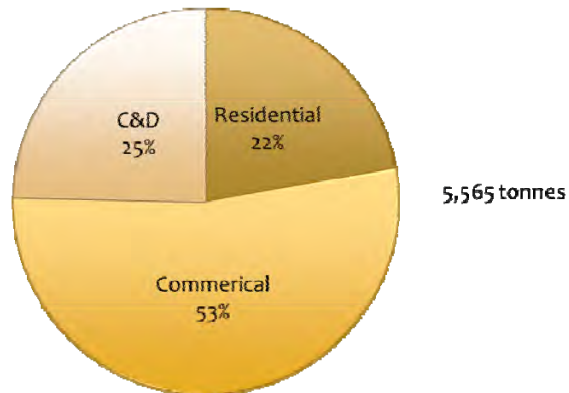


Alberni Valley Waste Disposal



Waste Disposal Comparison

West Coast Landfill



Alberni Valley Landfill

