






WEEKLY FIRE SAFETY BULLETIN - July 10th, 2017

PACIFIC RIM NATIONAL PARK RESERVE OF CANADA

CURRENT FIRE BANS AND ACTIVITY RESTRICTIONS IN PACIFIC RIM NATIONAL PARK RESERVE

	FIRES PROHIBITED	FIRES ALLOWED IN FOLLOWING AREAS
LONG BEACH UNIT	 <p>* FIRES NOT ALLOWED IN ALL FOREST AREAS</p> <p>EXCEPT IN DESIGNATED FIRE PITS/RINGS IN GREEN POINT CAMPGROUND</p> <p><u>ADDITIONALLY FIRES ARE NOT PERMITTED:</u></p> <p>* ON LONG BEACH BETWEEN THE BOTTOM OF SCHOONER TRAIL AND SANDHILL CREEK ON COMBERS BEACH;</p> <p>* SWIM BEACH ON KENNEDY LAKE</p> <p>(NOTE: THE KENNEDY LAKE BLOCK IS TECHNICALLY OUTSIDE OF THE "FOG ZONE" AND THEREFORE SUBJECT TO PROVINCIAL FIRE BAN)</p>	<p>FIRES PERMITTED IN THE FOLLOWING SELECT AREAS*</p> <p>(*SEE CONDITIONS BELOW):</p> <ul style="list-style-type: none"> ✓ GREEN POINT CAMPGROUND - DESIGNATED FIRE PITS/RINGS ✓ FLORENCIA BEACH ✓ WICKANINNISH BEACH ✓ SCHOONER COVE BEACH ✓ RADAR BEACHES
BROKEN GROUP ISLANDS	 <p>* FIRES NOT ALLOWED IN ALL FOREST AREAS AT ANY TIME</p>	<p>FIRES PERMITTED IN THE FOLLOWING SELECT AREAS*</p> <p>(*SEE CONDITIONS BELOW):</p> <ul style="list-style-type: none"> ✓ ALLOWED ON BEACHES

CURRENT FIRE BANS AND ACTIVITY RESTRICTIONS IN PACIFIC RIM NATIONAL PARK RESERVE

	FIRES PROHIBITED	FIRES ALLOWED IN FOLLOWING AREAS
<p style="text-align: center;">WEST COAST TRAIL</p>	 <p>× FIRES NOT ALLOWED IN ALL FOREST AREAS AT ANY TIME</p> <p>× FIRES NOT ALLOWED SOUTH OF OWEN POINT – (E.G. THRASHER COVE.) NOR ANY LOCATION FURTHER THAN 2 KM INLAND OF THE MARINE HIGH TIDE LINE. THESE AREAS ARE CURRENTLY OUTSIDE OF DESIGNATED “FOG ZONE” AND ARE THEREFORE SUBJECT TO PROVINCIAL FIRE BAN.</p> <p>× FIRES NOT ALLOWED ON BEACHES BETWEEN 34KM AND 38KM</p>	<p>FIRES PERMITTED IN THE FOLLOWING SELECT AREAS*</p> <p>(*SEE CONDITIONS BELOW):</p> <p>✓ ALLOWED ON SOME BEACHES</p> <p>× FIRES NOT ALLOWED SOUTH OF OWEN POINT – (E.G. THRASHER COVE.) NOR ANY LOCATION FURTHER THAN 2 KM INLAND OF THE MARINE HIGH TIDE LINE. THESE AREAS ARE CURRENTLY OUTSIDE OF DESIGNATED “FOG ZONE” AND ARE THEREFORE SUBJECT TO PROVINCIAL FIRE BAN.</p> <p>*EXCLUDES BEACHES:</p> <p>× BETWEEN 34KM AND 38KM</p>

ALL BEACH FIRES ARE SUBJECT TO THE FOLLOWING CONDITIONS:

- Beach fires must be a minimum of 5 m (15 ft) away from drift logs;
- Fires are prohibited in or near the forest, where overhanging vegetation could be damaged, and in sandy areas with evidence of large root systems underneath;
- Do not build fires on windy days;
- Fuel may only consist of purchased firewood or driftwood found on beaches below the high tide line that is small enough to burn down completely to ashes;
- Fires must be small (<1 m diameter) and must be able to be put out quickly and completely;
- The fire must not be buried in sand prior to extinguishing, instead the fire should be burnt to ash and extinguished with water until cool to the touch;
- A minimum of 8-10 L of water must be kept on hand (within 5 m of fire) to extinguish fires;
- and all signs of the fire must be obliterated.

REASON:

TO ENSURE PUBLIC SAFETY AND THE PROTECTION OF NATURAL RESOURCES.

AUTHORITY:

PURSUANT TO SECTION 4(3) OF THE NATIONAL PARKS FIRE REGULATIONS.



**PACIFIC RIM NATIONAL PARK RESERVE OF CANADA IS LOCATED WITHIN THE PROVINCIAL FIRE AREA:
COASTAL FIRE CENTRE**

AREAS LOCATED WITHIN THE "FOG ZONE" SUB AREA

(I.E. 2KM INLAND FROM HIGH TIDE MARK – SEE MAP BELOW)

CURRENT FIRE DANGER RATING: **MODERATE**

[HTTP://WWW2.GOV.BC.CA/GOV/CONTENT/SAFETY/WILDFIRE-STATUS/FIRE-DANGER](http://www2.gov.bc.ca/gov/content/safety/wildfire-status/fire-danger)

DANGER CLASS (SCALE 0 TO 5): **2 = Low Danger to 3 = Moderate Danger**

(SOURCE: TOFINO WEATHER STATION)

<http://bcfireinfo.for.gov.bc.ca/hprScripts/DgrCls/index.asp?Region=2>

AREAS OUTSIDE OF THE "FOG ZONE" SUB AREA

(I.E. SOUTH OF OWEN POINT, OR BEYOND 2 KM FROM MARINE HIGH TIDE MARK- SEE MAP BELOW)

AREAS OUTSIDE OF FOG ZONE:

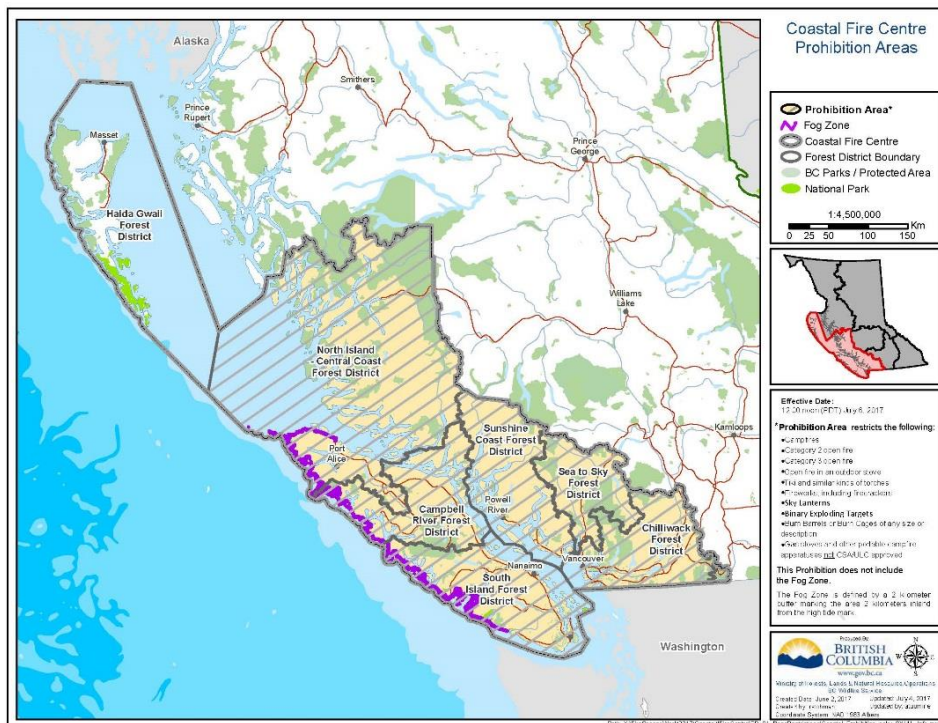
CURRENT FIRE DANGER RATING: **HIGH**

[HTTP://WWW2.GOV.BC.CA/GOV/CONTENT/SAFETY/WILDFIRE-STATUS/FIRE-DANGER](http://www2.gov.bc.ca/gov/content/safety/wildfire-status/fire-danger)

DANGER CLASS (SCALE 0 TO 5): **4 = High Danger**

(SOURCE: VICTORIA WEATHER STATION)

<http://bcfireinfo.for.gov.bc.ca/hprScripts/DgrCls/index.asp?Region=2>



BC Coastal Fire Centre Areas (including area of Fog Zone) : <http://ow.ly/bCJc30caIul>






ADDITIONAL INFORMATION LINKS:

CURRENT CAMPFIRE PROHIBITIONS IN BRITISH COLUMBIA:

[HTTP://BCFIREINFO.FOR.GOV.BC.CA/FTP/!PROJECT/WILDFIRENEWS/CAMPFIRES%20PINK.PDF](http://bcfireinfo.for.gov.bc.ca/ftp/!PROJECT/WILDFIRENEWS/CAMPFIRES%20PINK.PDF)

CURRENT FIRE REGULATIONS AND BANS IN BC

[HTTP://BCFIREINFO.FOR.GOV.BC.CA/HPRSCRIPTS/WILDFIRENEWS/NEWS.ASP](http://bcfireinfo.for.gov.bc.ca/hprscripts/wildfirenews/news.asp)

Fire Centre	Open Fires	Campfires	Forest Use
Coastal			
	Restrictions	Restrictions	Unrestricted

Open fires to be prohibited in Coastal Fire Centre

7/5/2017 8:42 AM

PARKSVILLE - Effective at noon on Thursday, July 6, 2017, all open fires (including campfires) will be prohibited throughout the Coastal Fire Centre's jurisdiction, with the exception of Haida Gwaii and the area known as the "Fog Zone".

The Fog Zone is a two-kilometre strip of land along the outer coast of Vancouver Island, stretching from Owen Point (near Port Renfrew) north to the tip of Vancouver Island and around to the boundary of the District of Port Hardy. This strip extends inland two kilometres from the high tide point. A map of the Fog Zone is available online at: <http://ow.ly/bCJc30calul>